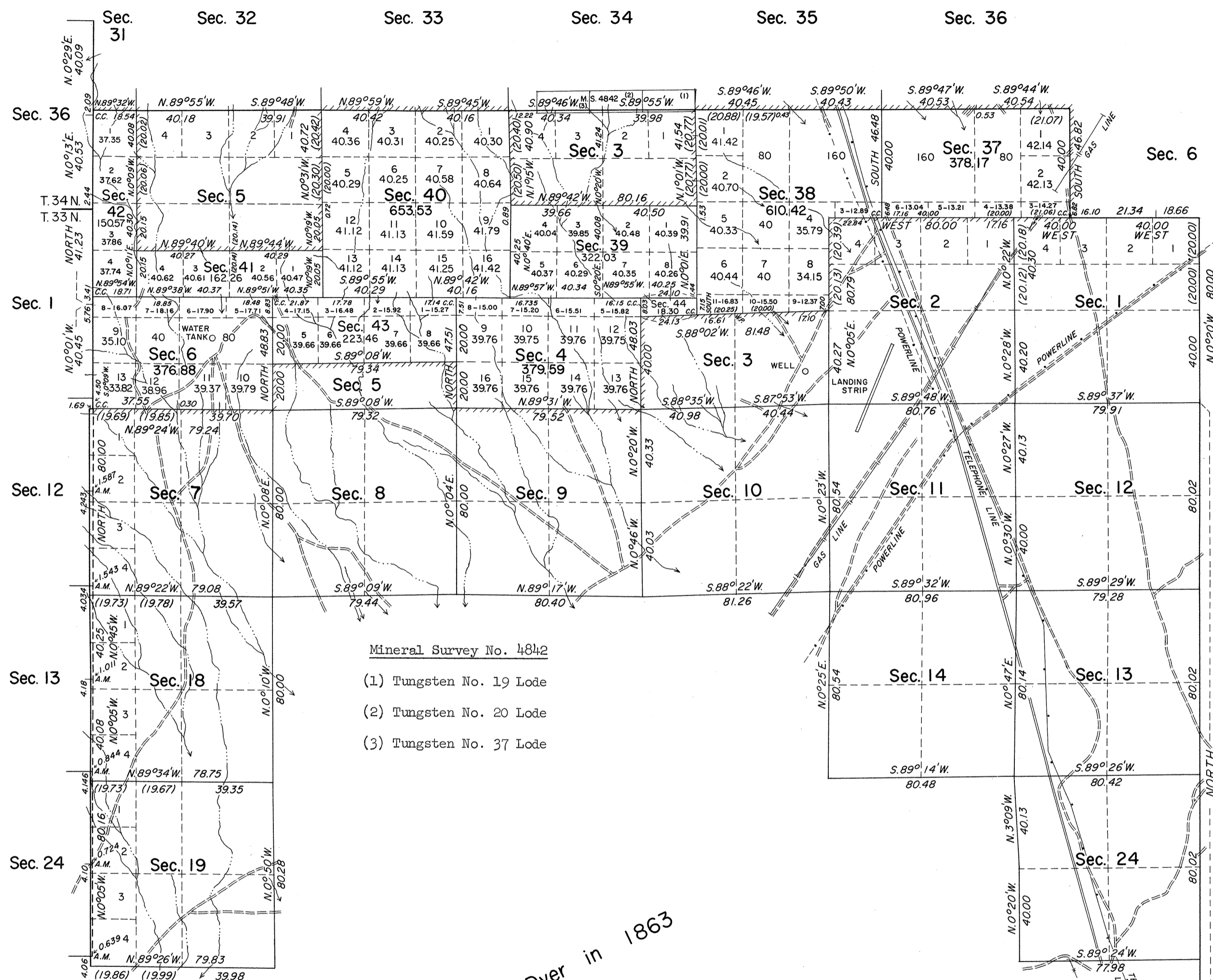


TOWNSHIP 33 NORTH, RANGE 34 EAST, OF THE MOUNT DIABLO MERIDIAN, NEVADA

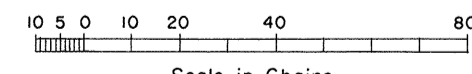
DEPENDENT RESURVEY AND SURVEY

OFFICIALLY FILED
NEVADA LAND OFFICE
10:00 AM May 23, 1970



- Mineral Survey No. 4842
- (1) Tungsten No. 19 Lode
 - (2) Tungsten No. 20 Lode
 - (3) Tungsten No. 37 Lode

Surveyed by E. H. Dyer in 1863



Area resurveyed: 11,206.26 Acres
 Area surveyed: 1,669.11 Acres

History of the earlier surveys is contained in the field notes.

This plat represents the dependent resurvey of a portion of the east boundary of T. 33 N., R. 33 E.; a portion of the east boundary of T. 34 N., R. 33 E.; the east and north boundaries, portions of the west boundary, and the subdivisional lines of T. 33 N., R. 34 E., designed to restore the corners in their true original locations according to the best available evidence, and, the survey of a portion of the subdivisional lines of T. 33 N., R. 34 E., Mount Diablo Meridian, Nevada.

Lottings and areas (except as indicated hereon) are as shown on plats approved March 28, 1864, and November 29, 1902.

These surveys were executed by James R. Munson, Cadastral Surveyor, May 29, 1967, to November 28, 1967, under Supplemental Special Instructions dated May 29, 1967, for Group No. 442, Nevada.

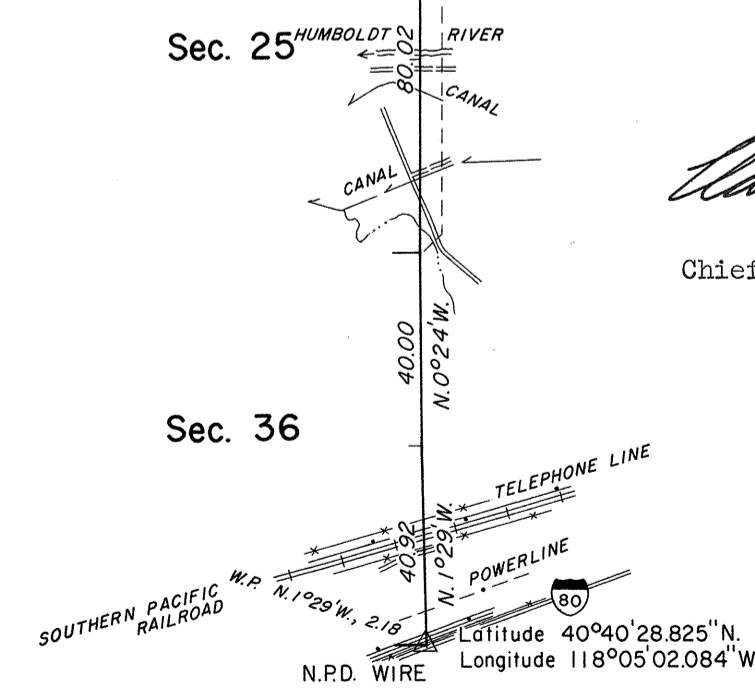
UNITED STATES DEPARTMENT OF THE INTERIOR
 BUREAU OF LAND MANAGEMENT
 Washington, D. C. February 16, 1970

This plat is strictly conformable to the approved field notes, and the survey, having been correctly executed in accordance with the requirements of law and the regulations of this Bureau, is hereby accepted.

For the Director

Clark I. Lumm

Chief, Division of Cadastral Survey



T33N R34E