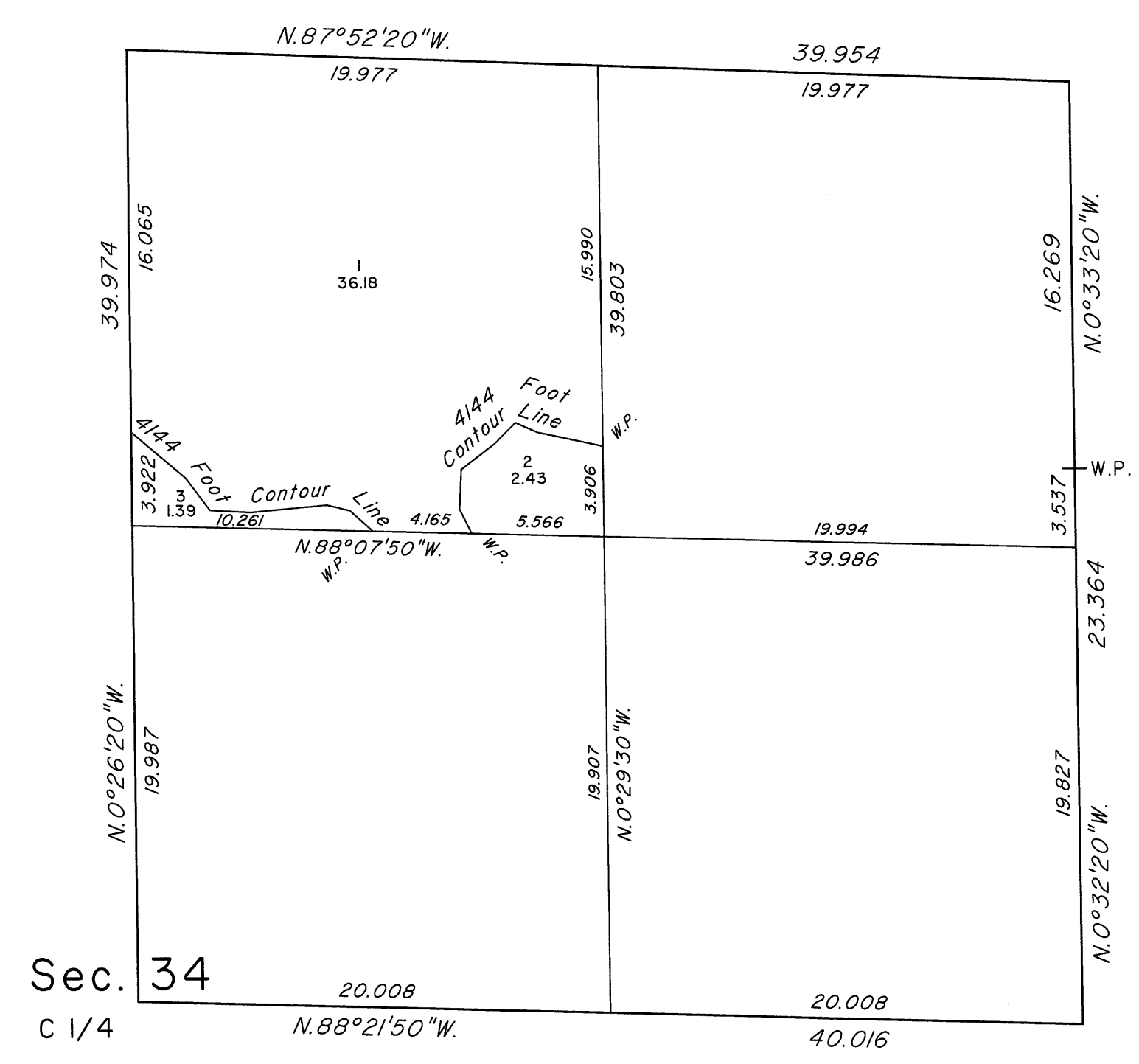
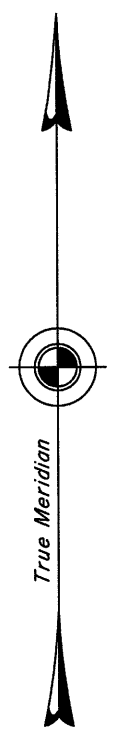


TOWNSHIP 33 NORTH, RANGE 33 EAST, OF THE MOUNT DIABLO MERIDIAN, NEVADA

ENLARGED DIAGRAM OF NE1/4 OF SECTION 34

OFFICIALLY FILED  
NEVADA STATE OFFICE  
at 10:00 AM on May 9, 2011



Reference should be made to Sheet No. 1 for survey information.

UNITED STATES DEPARTMENT OF THE INTERIOR  
BUREAU OF LAND MANAGEMENT

Reno, Nevada April 29, 2011

This plat is strictly conformable to the approved field notes, and the survey, having been correctly executed in accordance with the requirements of law and the regulations of this Bureau, is hereby accepted.

For the Director

Chief Cadastral Surveyor, Nevada

