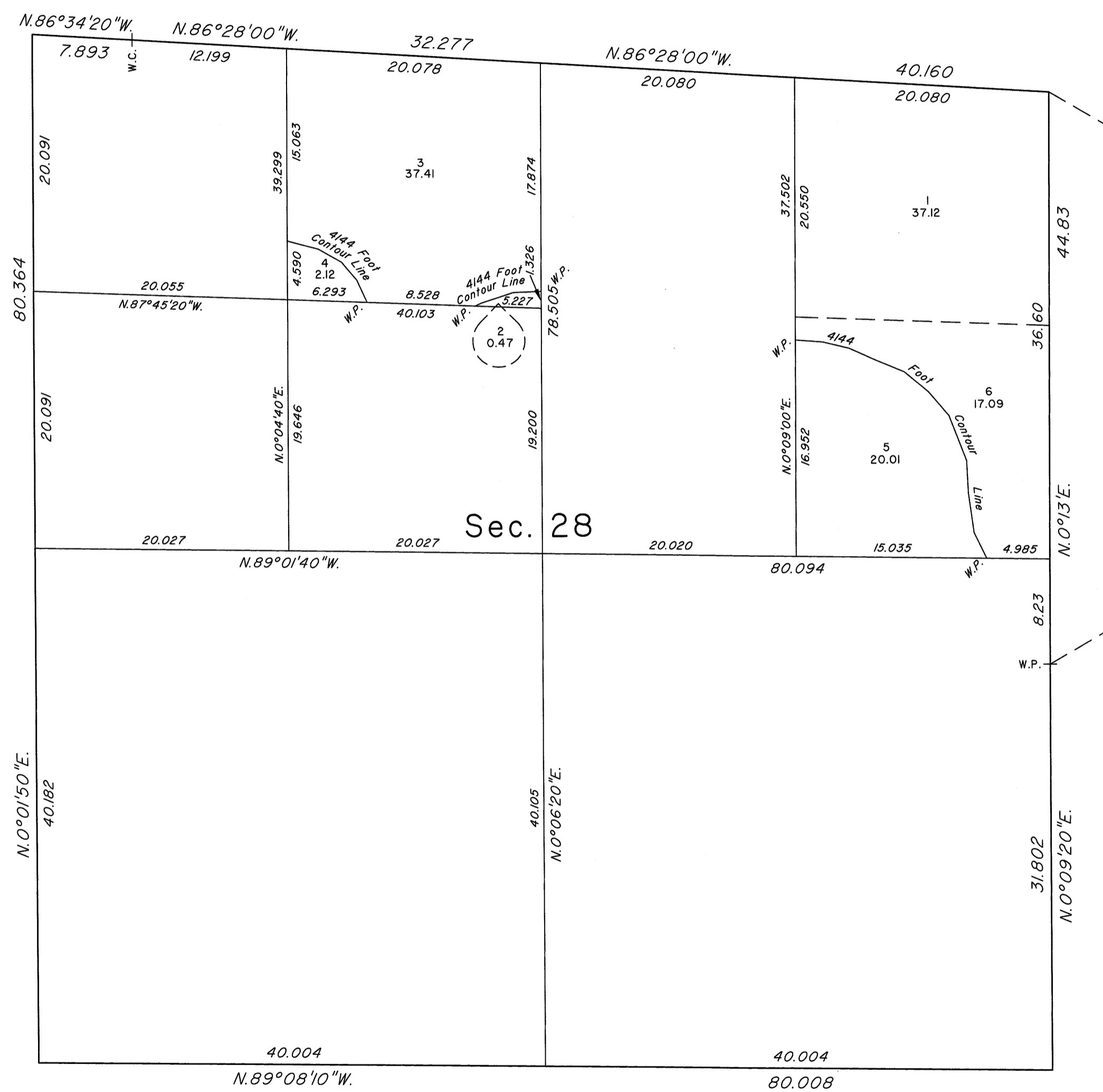
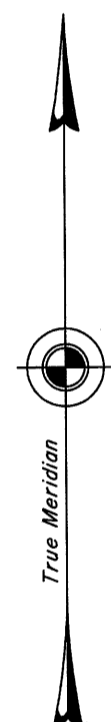


TOWNSHIP 33 NORTH, RANGE 33 EAST, OF THE MOUNT DIABLO MERIDIAN, NEVADA
ENLARGED DIAGRAM OF SECTION 28

OFFICIALLY FILED
NEVADA STATE OFFICE
at 10:00 AM on May 9, 2011



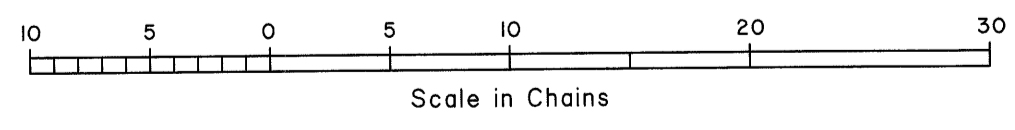
Reference should be made to Sheet No. 1 for survey information.

UNITED STATES DEPARTMENT OF THE INTERIOR
BUREAU OF LAND MANAGEMENT
Reno, Nevada April 29, 2011

This plat is strictly conformable to the approved field notes, and the survey, having been correctly executed in accordance with the requirements of law and the regulations of this Bureau, is hereby accepted.

For the Director
David A. Moran

Chief Cadastral Surveyor, Nevada



BKG

T.33N., R.33E., M.D.M.