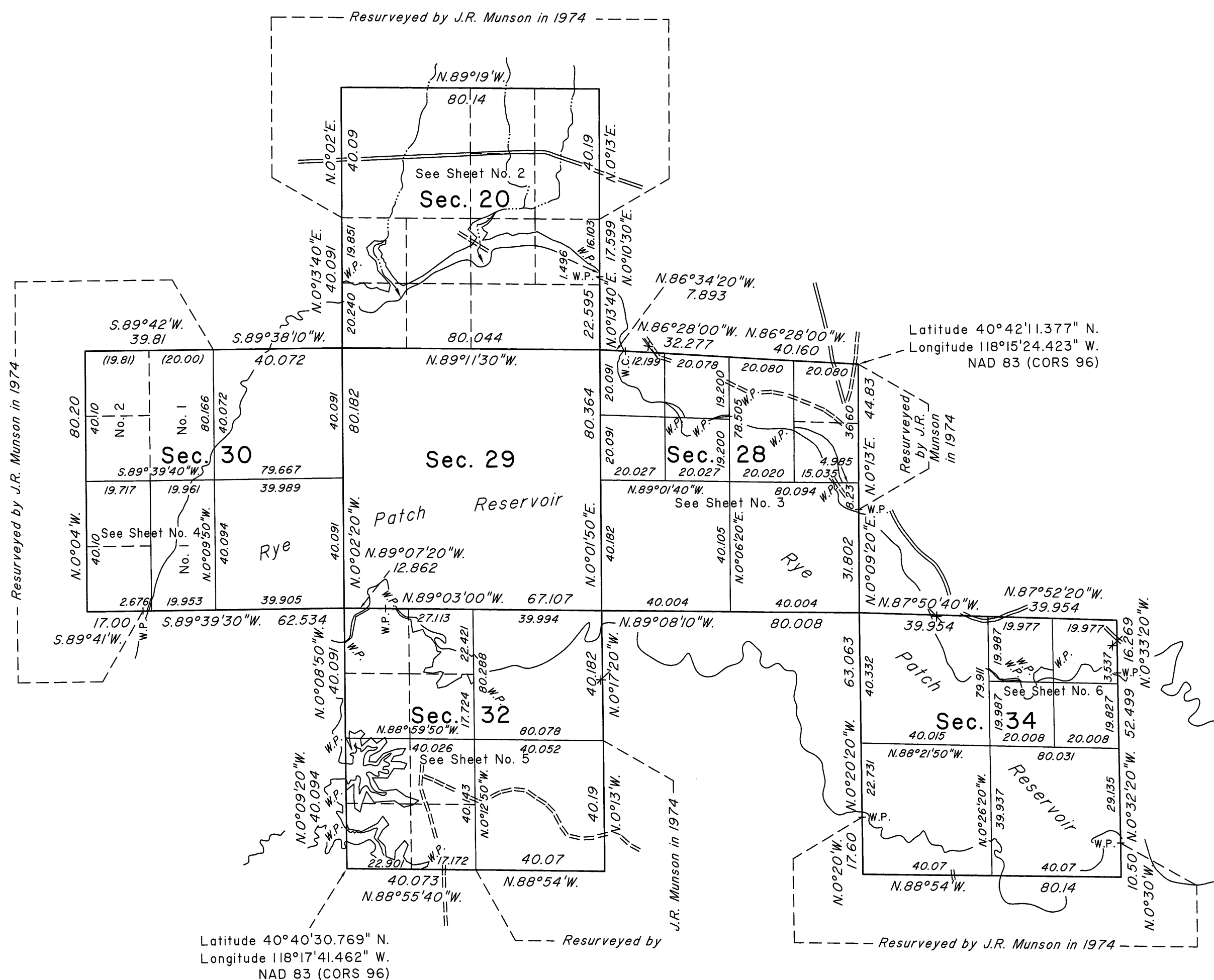
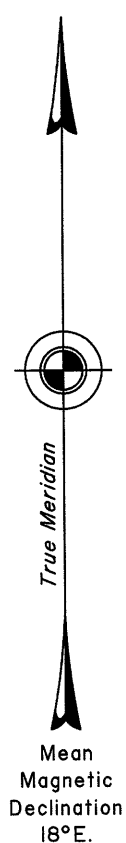


TOWNSHIP 33 NORTH, RANGE 33 EAST, OF THE MOUNT DIABLO MERIDIAN, NEVADA

DEPENDENT RESURVEY AND SUBDIVISION

OFFICIALLY FILED
NEVADA STATE OFFICE
at 10:00 AM on May 9, 2011



A history of the surveys is contained in the field notes.

This plat, in six sheets, represents the dependent resurvey of a portion of the south boundary and a portion of the subdivisional lines designed to restore the corners in their true original locations according to the best available evidence, the subdivision of certain sections, and the survey of the meanders of portions of the 4144 foot contour line, Township 33 North, Range 33 East, Mount Diablo Meridian, Nevada.

Except as indicated hereon, the lottings and areas are as shown on the plat approved March 25, 1864, and the plat accepted January 26, 1976.

Survey executed by Don R. Aschenbach, Cadastral Surveyor, beginning October 30, 2009, and completed March 21, 2011, pursuant to Special Instructions dated September 23, 2009, for Group No. 888, Nevada.

UNITED STATES DEPARTMENT OF THE INTERIOR
BUREAU OF LAND MANAGEMENT

Reno, Nevada April 29, 2011

This plat is strictly conformable to the approved field notes, and the survey, having been correctly executed in accordance with the requirements of law and the regulations of this Bureau, is hereby accepted.

For the Director

Chief Cadastral Surveyor, Nevada

