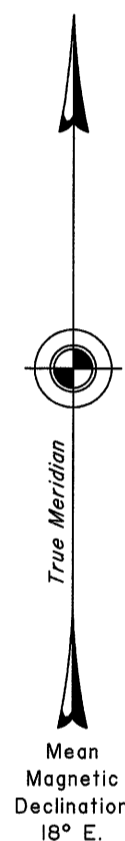


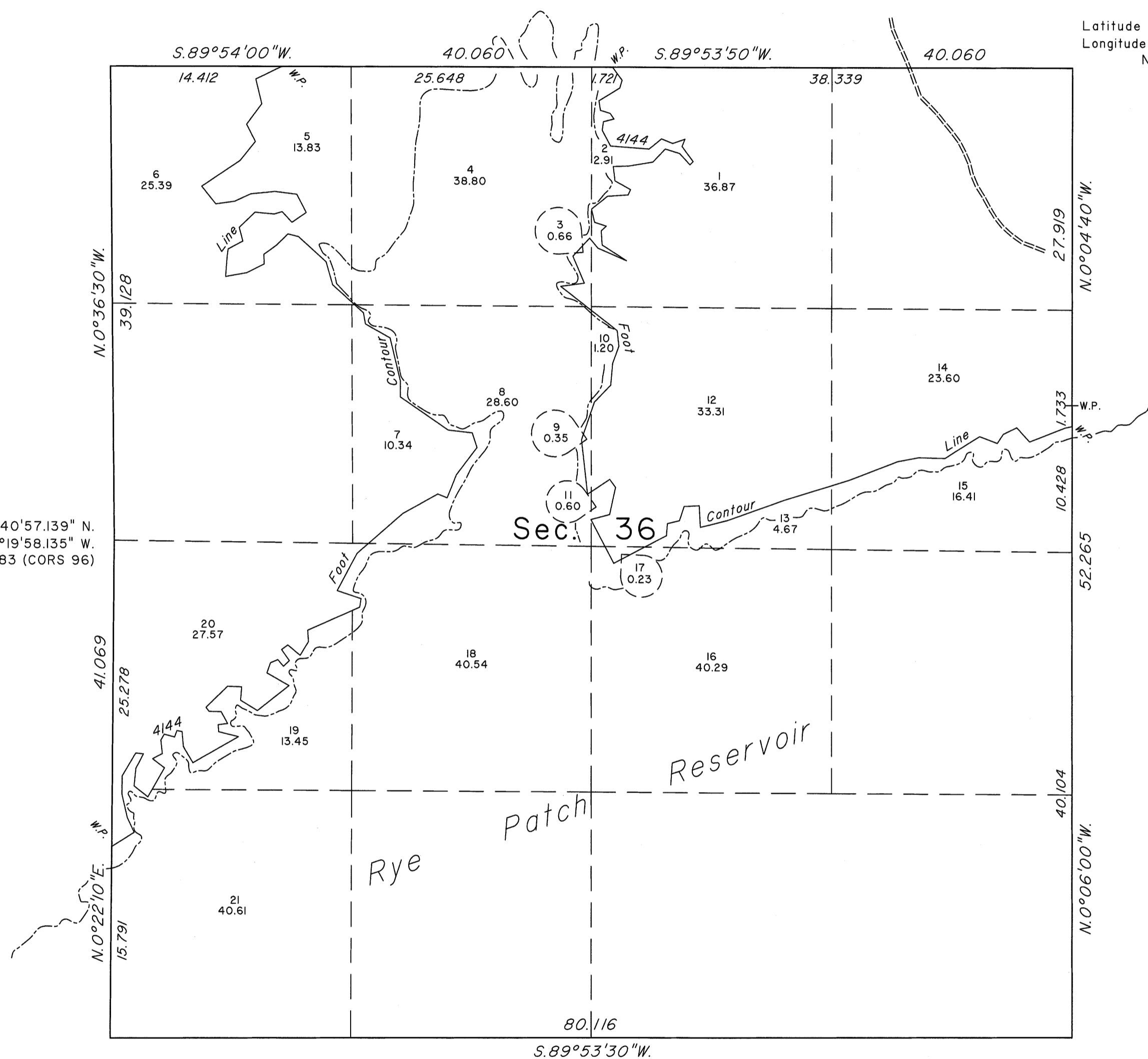
TOWNSHIP 33 NORTH, RANGE 32 EAST, OF THE MOUNT DIABLO MERIDIAN, NEVADA  
DEPENDENT RESURVEY

OFFICIALLY FILED  
NEVADA STATE OFFICE  
at 10:00 AM on February 16, 2012



Latitude 40°40'57.139" N.  
Longitude 118°19'58.135" W.  
NAD 83 (CORS 96)

Latitude 40°41'22.742" N.  
Longitude 118°18'49.859" W.  
NAD 83 (CORS 96)



A history of the surveys is contained in the field notes.

This plat represents the dependent resurvey of a portion of the east boundary and a portion of the subdivisinal lines designed to restore the corners in their true original locations according to the best available evidence, and the survey of the meanders of the 4144 foot contour line in section 36, Township 33 North, Range 32 East, Mount Diablo Meridian, Nevada.

A portion of the south boundary was dependently resurveyed concurrently under Group No. 884.

Except as indicated hereon, the lotting and areas are as shown on the plat approved March 23, 1864, and the plat accepted January 9, 1978.

Survey executed by Don R. Aschenbach, Cadastral Surveyor, beginning October 30, 2009, and completed October 6, 2010, under Special Instructions dated September 23, 2009, for Group No. 888, Nevada.

UNITED STATES DEPARTMENT OF THE INTERIOR  
BUREAU OF LAND MANAGEMENT

Reno, Nevada February 10, 2012

This plat is strictly conformable to the approved field notes, and the survey, having been correctly executed in accordance with the requirements of law and the regulations of this Bureau, is hereby accepted.

For the Director

Chief Cadastral Surveyor, Nevada

