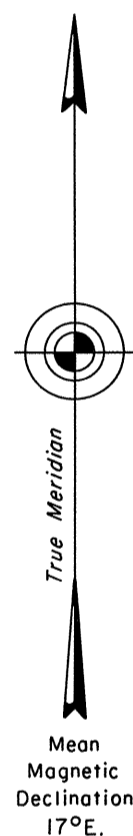


ORIGINAL

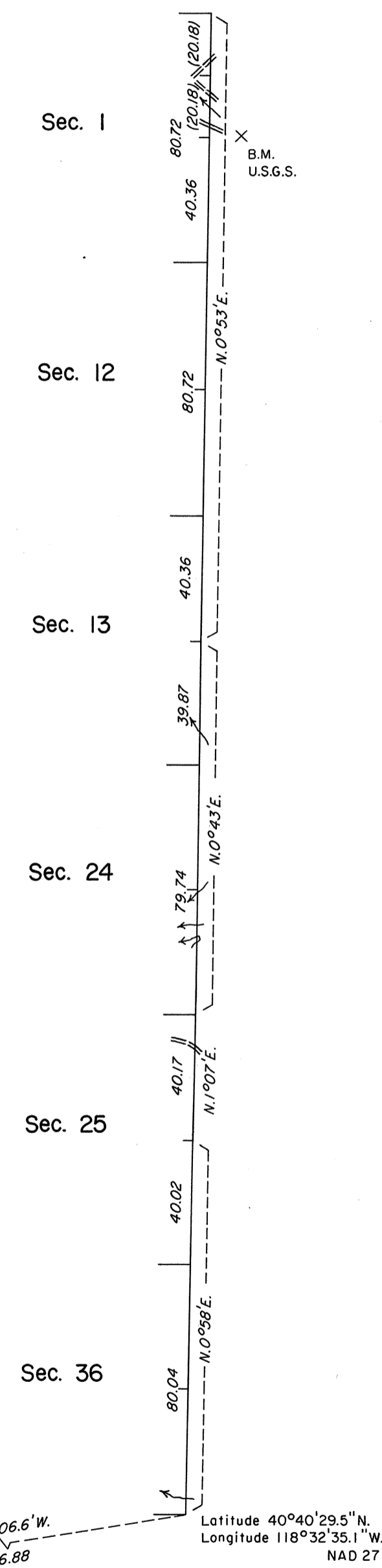
TOWNSHIP 33 NORTH, RANGE 30 EAST, OF THE MOUNT DIABLO MERIDIAN, NEVADA
DEPENDENT RESURVEY



Surveyed by

G. W. Garside and C. S. Preble

in 1875

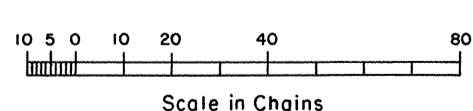


History of the earlier surveys is contained in the field notes.
This plat represents the dependent resurvey of the east boundary of T. 33 N., R. 30 E., designed to restore the corners in their true original locations according to the best available evidence.
Survey executed by Neil R. Forsyth, Cadastral Surveyor, beginning December 1, 1988 and completed May 2, 1989, under Special Instructions dated November 28, 1988 for Group No. 668, Nevada.

UNITED STATES DEPARTMENT OF THE INTERIOR
BUREAU OF LAND MANAGEMENT
Reno, Nevada July 26, 1989

This plat is strictly conformable to the approved field notes, and the survey, having been correctly executed in accordance with the requirements of law and the regulations of this Bureau, is hereby accepted.

For the Director
Lacel E. Bland
Chief Cadastral Surveyor



GU

JRM

T.33N., R.30E., M.D.M.