

TOWNSHIP 32 1/2 NORTH, RANGE 17 EAST, OF THE MOUNT DIABLO MERIDIAN, NEVADA

A history of surveys is contained in the field notes.

A retracement of the 91st mile and the 92nd mile on the Nevada-California State Line was executed concurrently under T. 33 N., R. 18 E., and T. 32 N., R. 17 E., respectively, of this Group. A survey of the south boundary and a survey of the north boundary was executed concurrently under T. 32 N., R. 17 E., and T. 33 N., R. 18 E., respectively, of this Group.

This plat represents a survey of the east boundary of T. 32 1/2 N., R. 17 E.

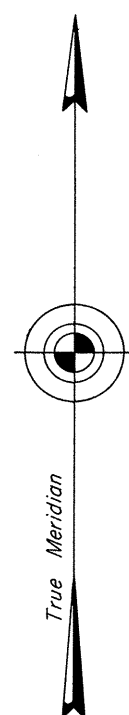
Survey executed by Neil R. Forsyth, Cadastral Surveyor, October 30, 1972 to July 13, 1973, under Special Instructions dated September 21, 1972, for Group No. 492, Nevada.

UNITED STATES DEPARTMENT OF THE INTERIOR
BUREAU OF LAND MANAGEMENT
Washington, D.C. June 5, 1975

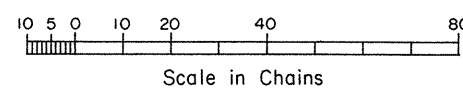
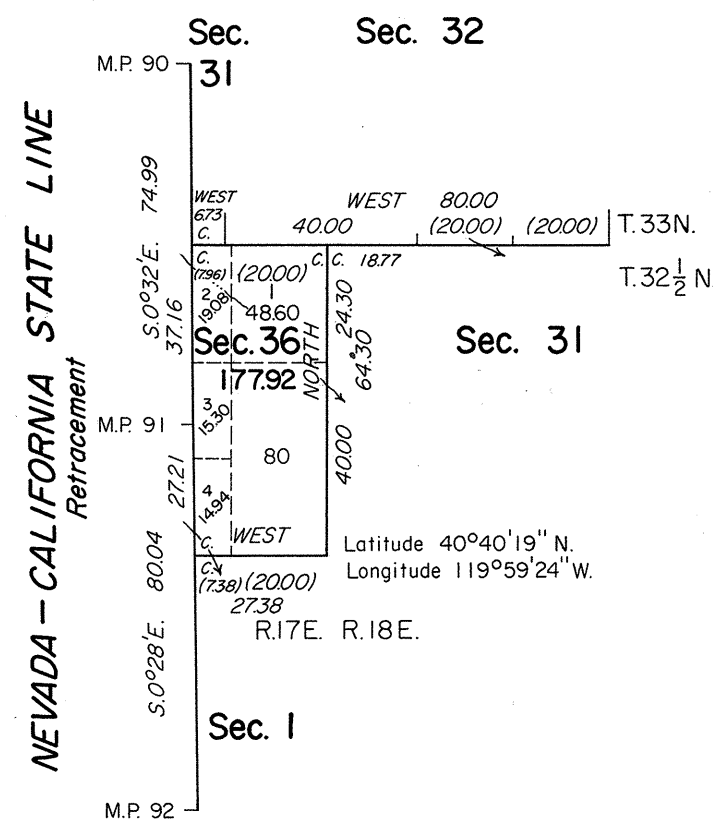
This plat is strictly conformable to the approved field notes, and the survey, having been correctly executed in accordance with the requirements of law and the regulations of this Bureau, is hereby accepted.

For the Director

Bernard W. Fisher
Chief, Division of Cadastral Survey



Mean Magnetic Declination
18 1/2° E.



Area Surveyed 177.92 Acres