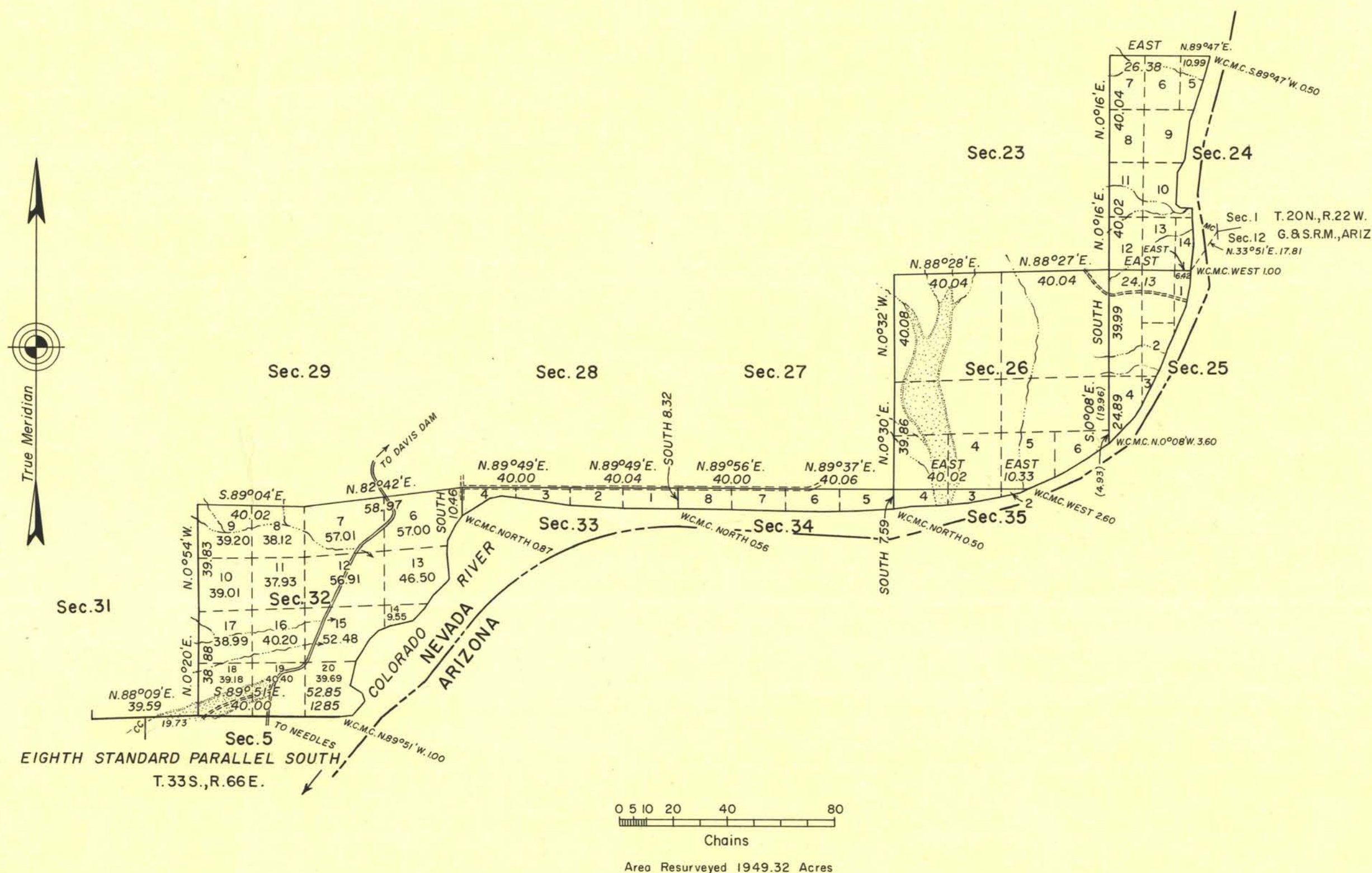


TOWNSHIP 32 SOUTH, RANGE 66 EAST OF THE MOUNT DIABLO MERIDIAN, NEVADA.

LIMITED DEPENDENT RESURVEY



This plat represents a retracement and reestablishment of a portion of the Eighth Standard Parallel South and of a portion of the subdivisional lines designed to restore the corners thereof in their original positions according to the best available evidence.

The township was originally surveyed by T.A. Magee, Deputy Surveyor, in 1883, as shown upon the plat approved August 24, 1883. The south boundary, being the Eighth Standard Parallel South, was resurveyed by Carl S. Swanholm, Cadastral Engineer, in 1932, under Group 157. The east four tiers of sections were resurveyed by J.W. Hardison, Cadastral Engineer, in 1947, under Group 239. The latter resurveys are represented upon the official plat accepted December 15, 1947. Except as new areas are shown hereon, the lottings and areas are as shown upon the plats referred to.

In the late 1950's the Colorado River was rechannelized and confined in part within this vicinity. The position of the Arizona-Nevada state boundary, in the river's present channel, is shown in accordance with P.L. 87-50, 87th Congress, June 16, 1961.

These surveys were executed by Eldon W. Sibley, Cadastral Surveyor, from November 9 to 24, 1961, pursuant to special instructions dated October 6, 1961, for Group 395, Nevada.

UNITED STATES DEPARTMENT OF THE INTERIOR
BUREAU OF LAND MANAGEMENT
Washington, D.C. May 17, 1962

This plat is strictly conformable to the approved field notes, and the survey, having been correctly executed in accordance with the requirements of law and the regulations of this Bureau, is hereby accepted.

For the Director

E. Remington

Chief, Division of Engineering