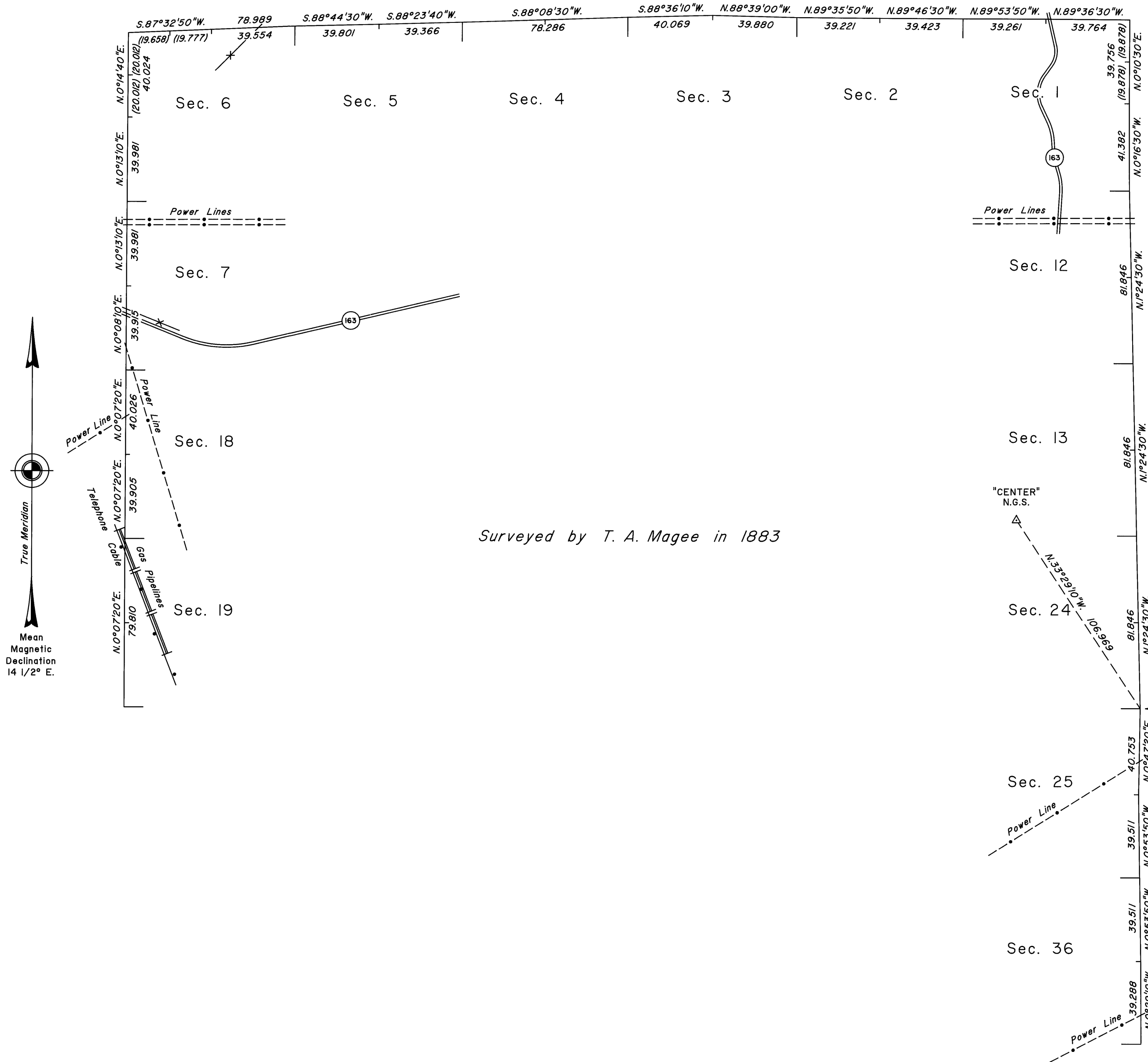


TOWNSHIP 32 SOUTH, RANGE 65 EAST, OF THE MOUNT DIABLO MERIDIAN, NEVADA  
DEPENDENT RESURVEY



A history of surveys is contained in the field notes.

A dependent resurvey of the east boundary was executed concurrently under T.32S., R.66E., of this same group.

This plat represents the dependent resurvey of a portion of the west boundary and the north boundary of Township 32 South, Range 65 East, Mount Diablo Meridian, Nevada, designed to restore the corners in their true original locations according to the best available evidence.

Survey executed by Richard A. Zaninovich, Cadastral Surveyor, beginning January 9, 1997, and completed January 28, 1997, pursuant to Special Instructions dated January 8, 1997, for Group No. 767, Nevada.

Latitude 35° 08' 16.034" N.  
Longitude 114° 40' 25.431" W.  
NAD 83

UNITED STATES DEPARTMENT OF THE INTERIOR  
BUREAU OF LAND MANAGEMENT

Reno, Nevada January 11, 2005

This plat is strictly conformable to the approved field notes, and the survey, having been correctly executed in accordance with the requirements of law and the regulations of this Bureau, is hereby accepted.

For the Director

*David W. Morlan*

Chief Cadastral Surveyor, Nevada

