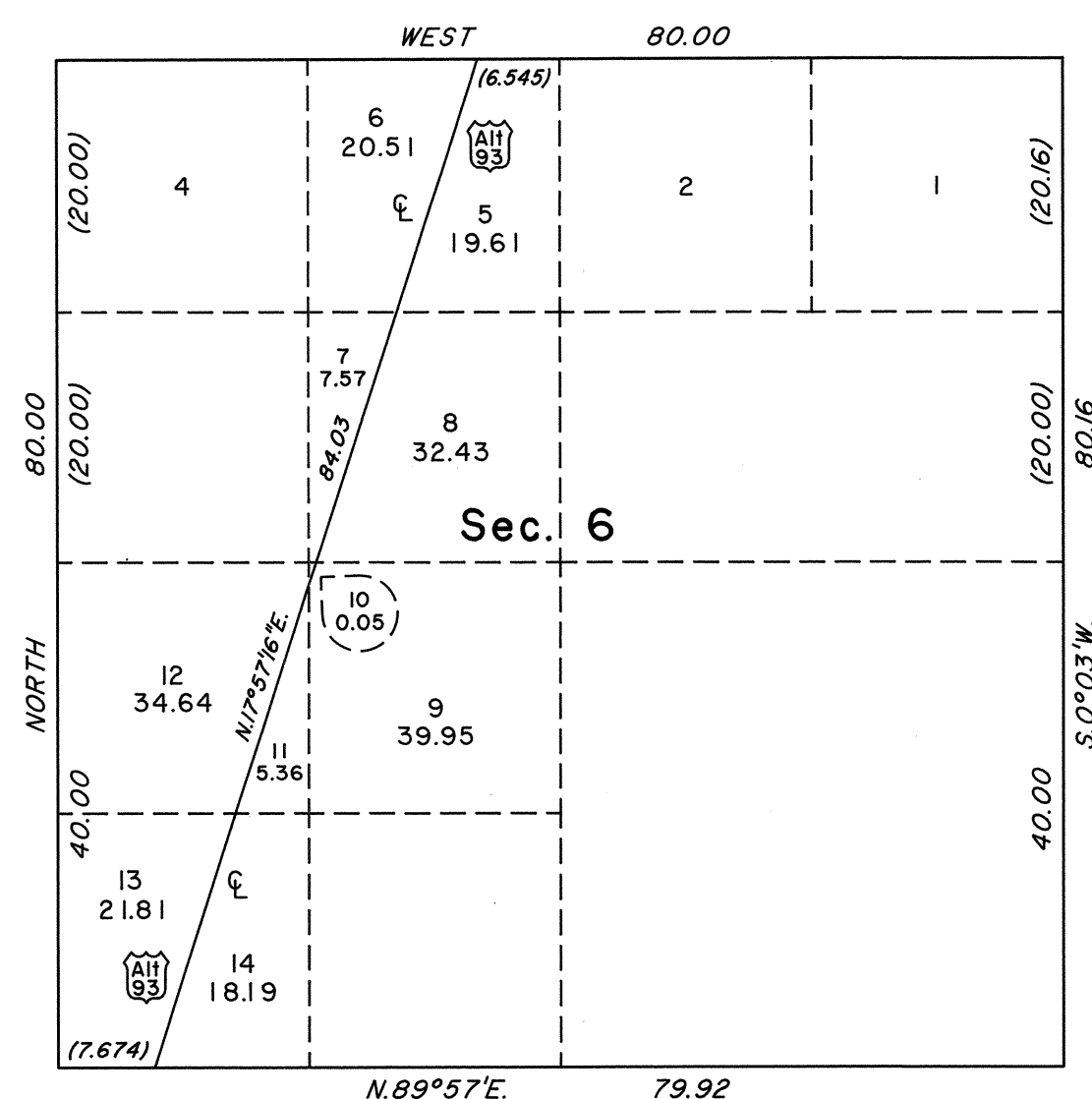
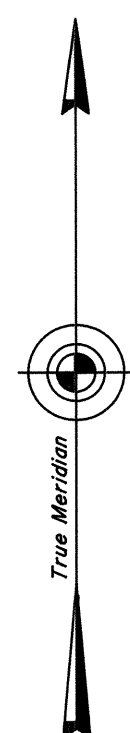


ORIGINAL

OFFICIALLY FILED
NEVADA STATE OFFICE
at 10:00 AM on April 8, 1997

TOWNSHIP 32 NORTH, RANGE 70 EAST, OF THE MOUNT DIABLO MERIDIAN, NEVADA
SUPPLEMENTAL PLAT OF SECTION 6



This plat, showing a subdivision of certain quarter quarter sections in section 6, T.32N., R.70E., Mount Diablo Meridian, Nevada, is based upon the plat accepted February 18, 1939, and the Nevada Department of Highways right-of-way application Nevada 041037 dated July 15, 1955.

UNITED STATES DEPARTMENT OF THE INTERIOR
BUREAU OF LAND MANAGEMENT

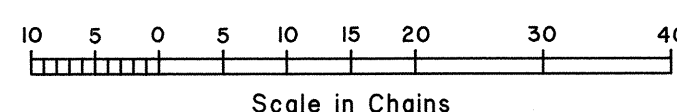
Reno, Nevada April 8, 1997

This plat, showing amended lottings, is based upon the official records, and having been correctly prepared in accordance with the regulations of this Bureau, is hereby accepted.

For the Director

Robert H. Thompson

Acting Chief Cadastral Surveyor, Nevada



60

T.32N., R.70E., M.D.M.