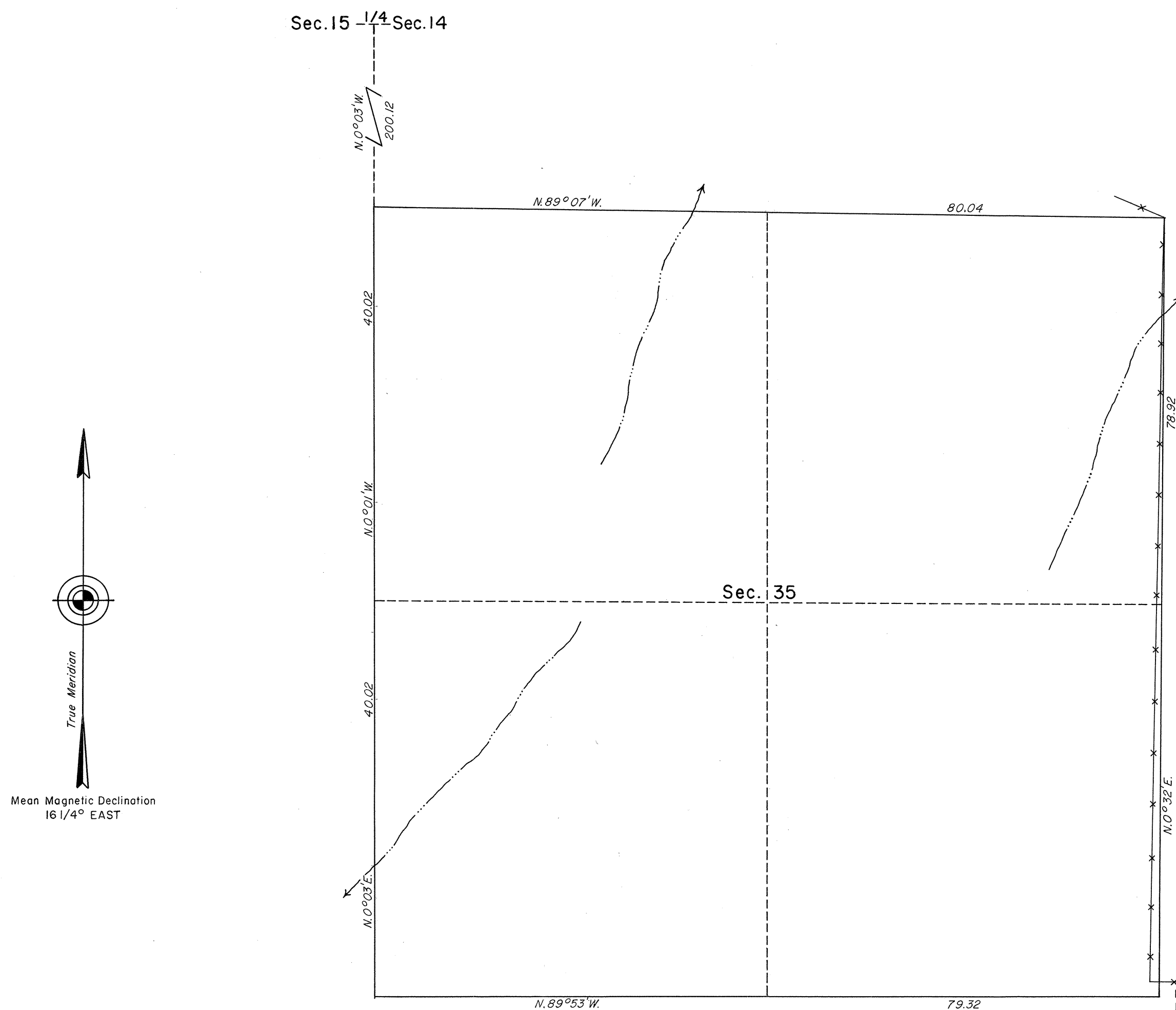


ORIGINAL

OFFICIALLY FILED
NEVADA STATE OFFICE
10:00 A.M. September 9, 1985

TOWNSHIP 32 NORTH, RANGE 56 EAST, OF THE MOUNT DIABLO MERIDIAN, NEVADA
DEPENDENT RESURVEY



History of the earlier surveys is contained in the field notes.

A dependent resurvey of a portion of the south boundary and a portion of the east boundary was executed concurrently under T. 31 N., R. 56 E. and T. 32 N., R. 57 E., respectively, of this same Group.

This plat represents a dependent resurvey of a portion of the subdivisional lines of T. 32 N., R. 56 E., designed to restore the corners in their true original locations according to the best available evidence.

Lottings and areas are as shown on the plat approved August 5, 1869.

Survey executed by Michael R. Collie and Robert A. Pratt, Cadastral Surveyors, beginning on April 29, 1974 and completed September 27, 1983, under Special Instructions dated March 8, 1974, for Group No. 506, Nevada.

UNITED STATES DEPARTMENT OF THE INTERIOR
BUREAU OF LAND MANAGEMENT

Reno, Nevada August 21, 1985

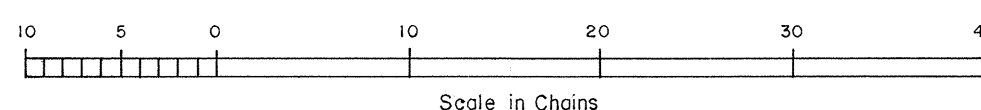
This plat is strictly conformable to the approved field notes, and the survey, having been correctly executed in accordance with the requirements of law and the regulations of this Bureau, is hereby accepted.

For the Director

Lacel E. Bland

Chief Cadastral Surveyor

Latitude 40° 36.4' N.
Longitude 115° 37.4' W.



MLC

JRM