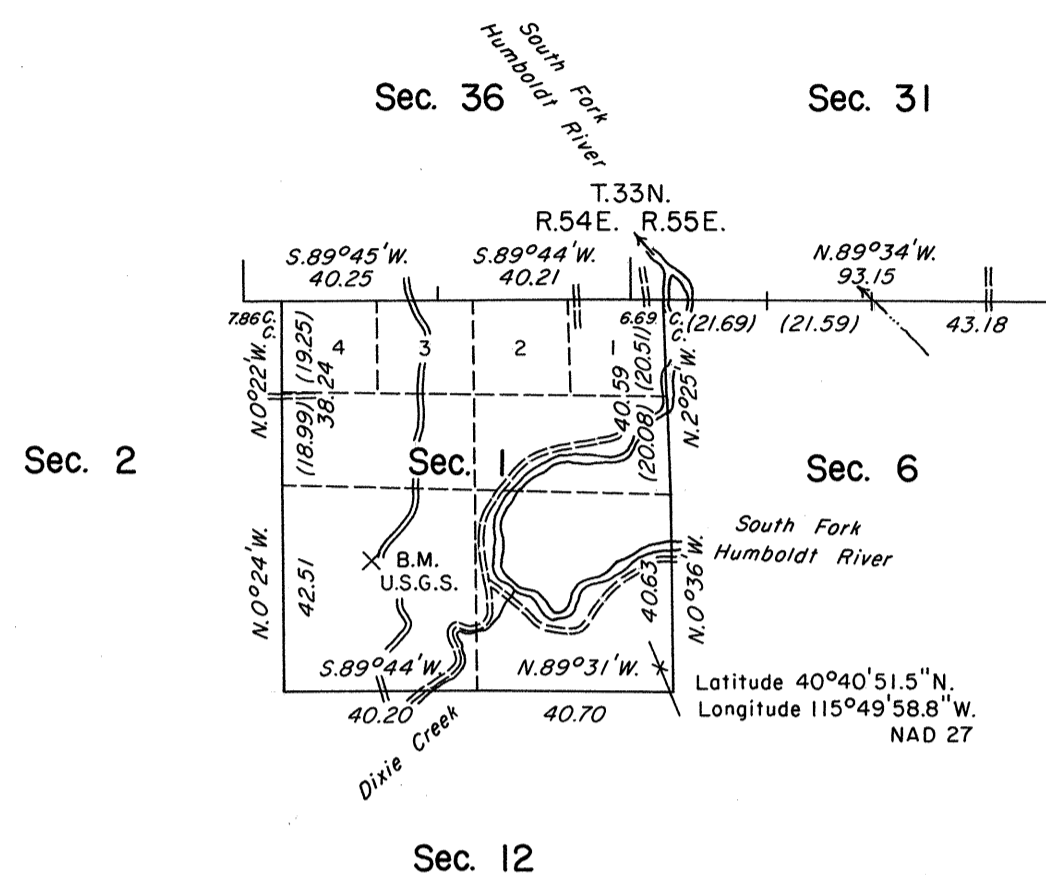


ORIGINAL

TOWNSHIP 32 NORTH, RANGE 54 EAST, OF THE MOUNT DIABLO MERIDIAN, NEVADA  
 DEPENDENT RESURVEY



History of the earlier surveys is contained in the field notes.

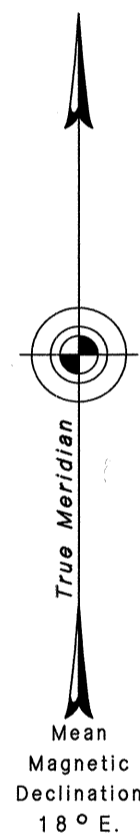
A dependent resurvey of portions of the south boundaries of T. 33 N., R. 54 E. and T. 33 N., R. 55 E., was executed concurrently under Tps. 33 N., Rs. 54 and 55 E., respectively, of this same Group.

This plat represents a dependent resurvey of a portion of the east boundary and a portion of the subdivisional lines of T. 32 N., R. 54 E., designed to restore the corners in their true original locations according to the best available evidence.

Lottings and areas are as shown on the plat approved February 20, 1897.

Survey executed by Neil R. Forsyth, Cadastral Surveyor, beginning May 5, 1987 and completed June 3, 1987, under Special Instructions dated April 29, 1987, for Group No. 645, Nevada.

Surveyed by H. B. Maxson in 1896



UNITED STATES DEPARTMENT OF THE INTERIOR  
 BUREAU OF LAND MANAGEMENT

Reno, Nevada September 16, 1988

This plat is strictly conformable to the approved field notes, and the survey, having been correctly executed in accordance with the requirements of law and the regulations of this Bureau, is hereby accepted.

For the Director

*Laurel E. Bland*

Chief Cadastral Surveyor

