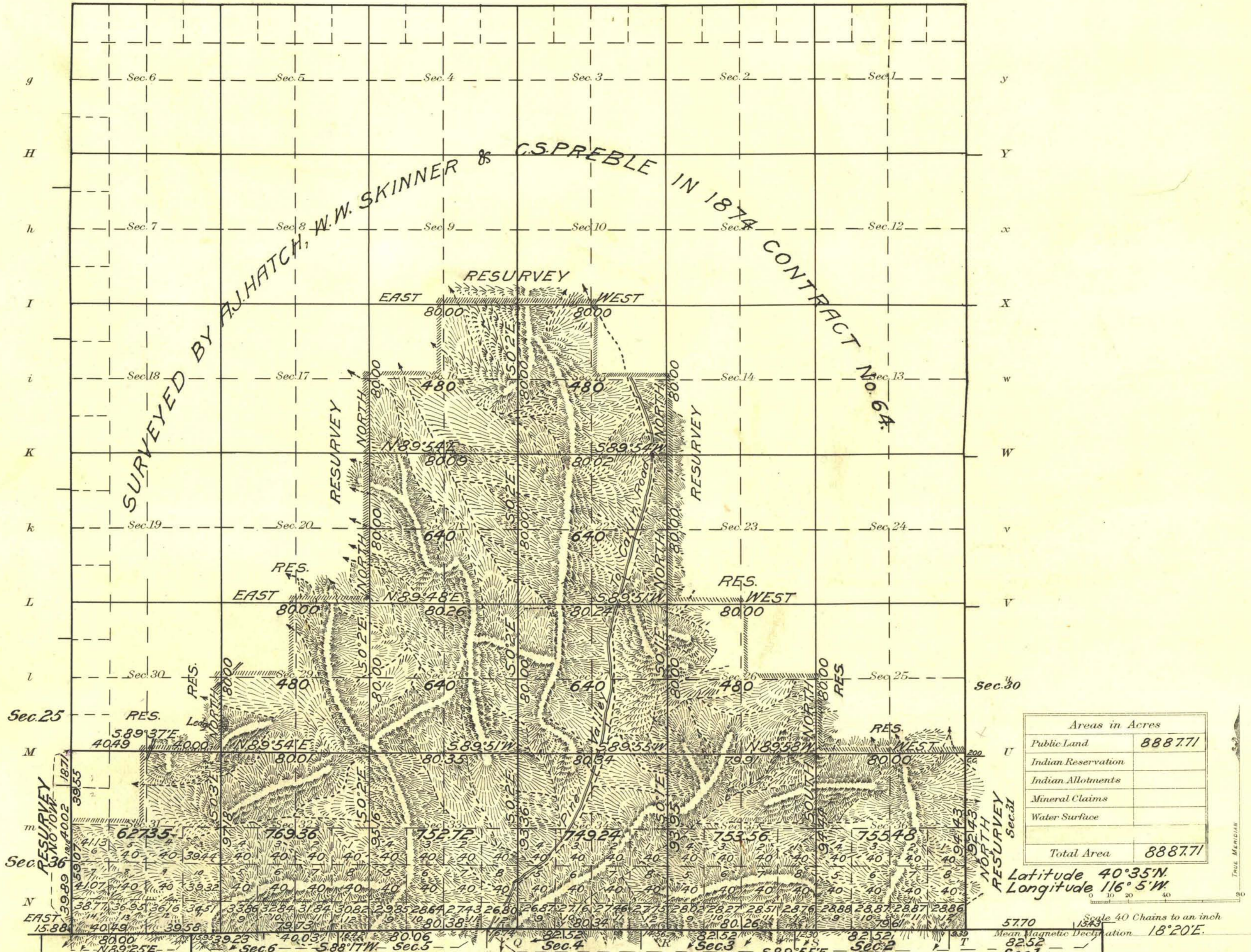


Township No. 32 North Range No. 52 East Mt. Diablo Meridian, Nevada.

Survey Accepted September 25, 1917  
G.L.O.

G f F e E d D c C b B a A



Sec. 1	Surveys Designated	By Whom Surveyed	Group			When Surveyed			
			No.	Date of Instructions	Mls.	chs.	lks.	Began	Completed
	South Bay Resur.	Winfred A. Pray	28	Feb. 20, 1914	7	9	40	Aug. 25, 1915	Sept. 7, 1915
	East Bay Resur.	" "	22	" "	1	14	43	Aug. 27, 1915	Sept. 4, 1915
	West Bay Resur.	" "	22	" "	1	18	62	Aug. 30, 1915	Aug. 30, 1915
	Subdivisions Resur.	" "	22	" "	12	00	49	Aug. 27, 1915	Sept. 4, 1915
	Subdivisions	" "	22	" "	18	75	31	Sept. 8, 1915	Sept. 13, 1915

The above map of Township No. 32 North Range No. 52 East of the Mt. Diablo Meridian, Nevada is strictly conformable to the field notes of the survey thereof on file in this office, which have been examined and approved

U.S. Surveyor General's Office,  
Reno, Nevada, April 13, 1917.

*John B. Sullivan*  
Surveyor General.

ARS