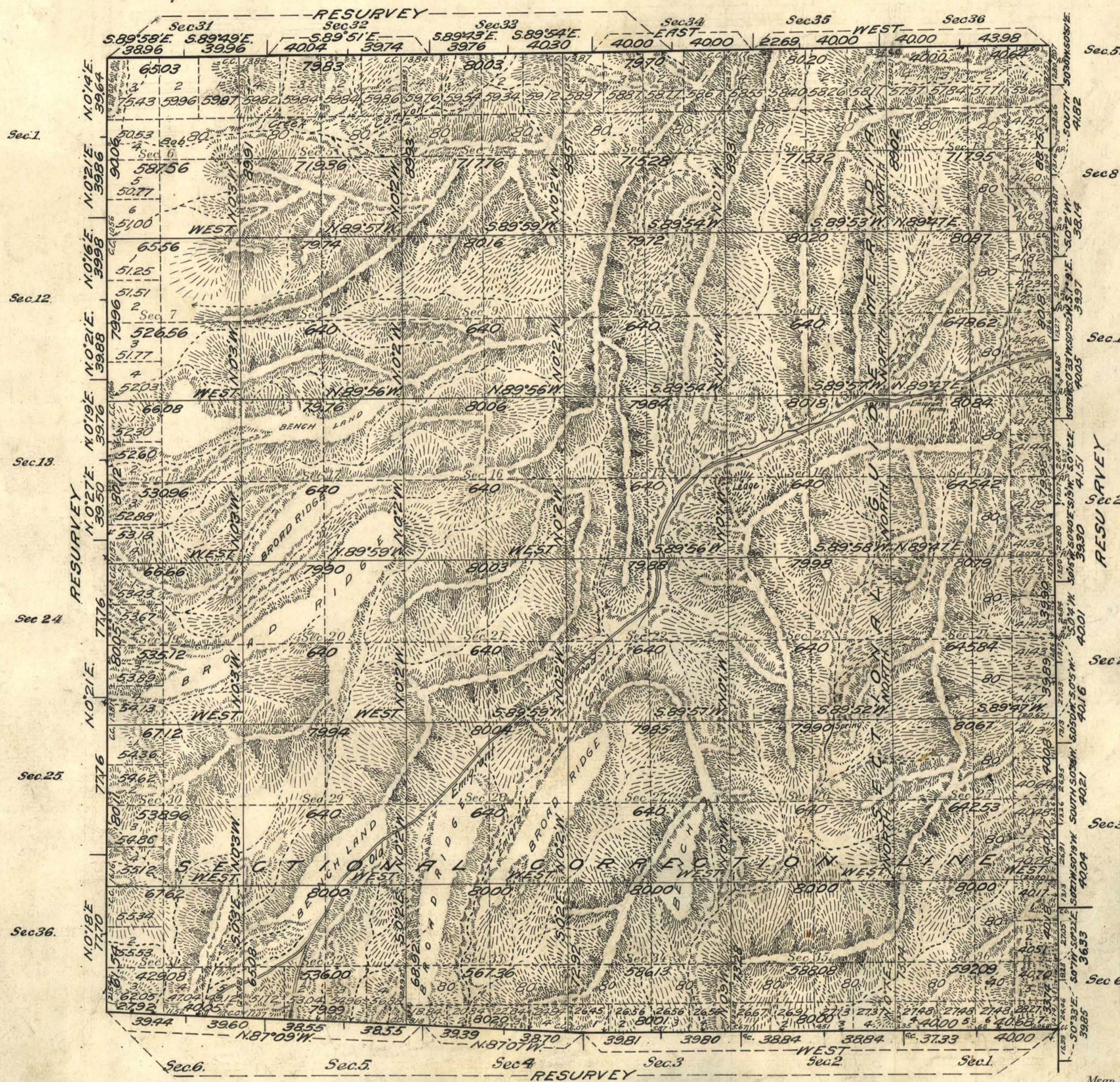


Township No. 32 North Range No. 50 East Mt. Diablo Meridian, Nevada



Areas in Acres	
Public Land	22423.98
Indian Reservation	
Indian Allotments	
Mineral Claims	
Water Surface	
Total Area	22423.98

Scale 40 Chains to an inch
 Mean Magnetic Declination 17°30'E
 Latitude 40°32'N
 Longitude 116°17'W

Surveys Designated	By Whom Surveyed	Group No. Date of Instructions	Amount of Surveys			When Surveyed	
			Mls.	chs.	lks.	Begun	Completed
West Bay Resur.		27 March 23, 1914	5	71	84	Nov. 11, 1914	May 11, 1916
South Bay Resur.	Scott P. Stewart	and	5	68	85	Nov. 16, 1914	May 25, 1918
East Bay Resur.	Ruban M. Riley	Feb. 14, 1914	6	2	87	Nov. 16, 1914	May 27, 1918
Sec. Corr. Line	and J. G. Clark	"	5	67	62	Nov. 19, 1914	Nov. 28, 1914
Sec. Guide Mer.	"	"	5	9	2	Nov. 19, 1914	Nov. 23, 1914
North Bay Resur.	"	"	3	38	76	Oct. 21, 1914	Nov. 11, 1916
North Boundary	"	"	2	26	67	Oct. 21, 1914	Nov. 11, 1916
Subdivision	"	"	48	20	37	Nov. 19, 1914	Nov. 30, 1918
Corrections	Scott P. Stewart and J. G. Clark	Apr. 6, 1916 Feb. 11, 1918				May 11, 1916 May 25, 1918	May 19, 1916 May 30, 1918

The above map of Township No. 32 North Range No. 50 East of the Mt. Diablo Meridian Nevada is strictly conformable to the field notes of the survey thereof on file in this office, which have been examined and approved

U. S. Surveyor General's Office.
 Reno, Nevada, October 18, 1921

J. G. Clark
 Surveyor General.