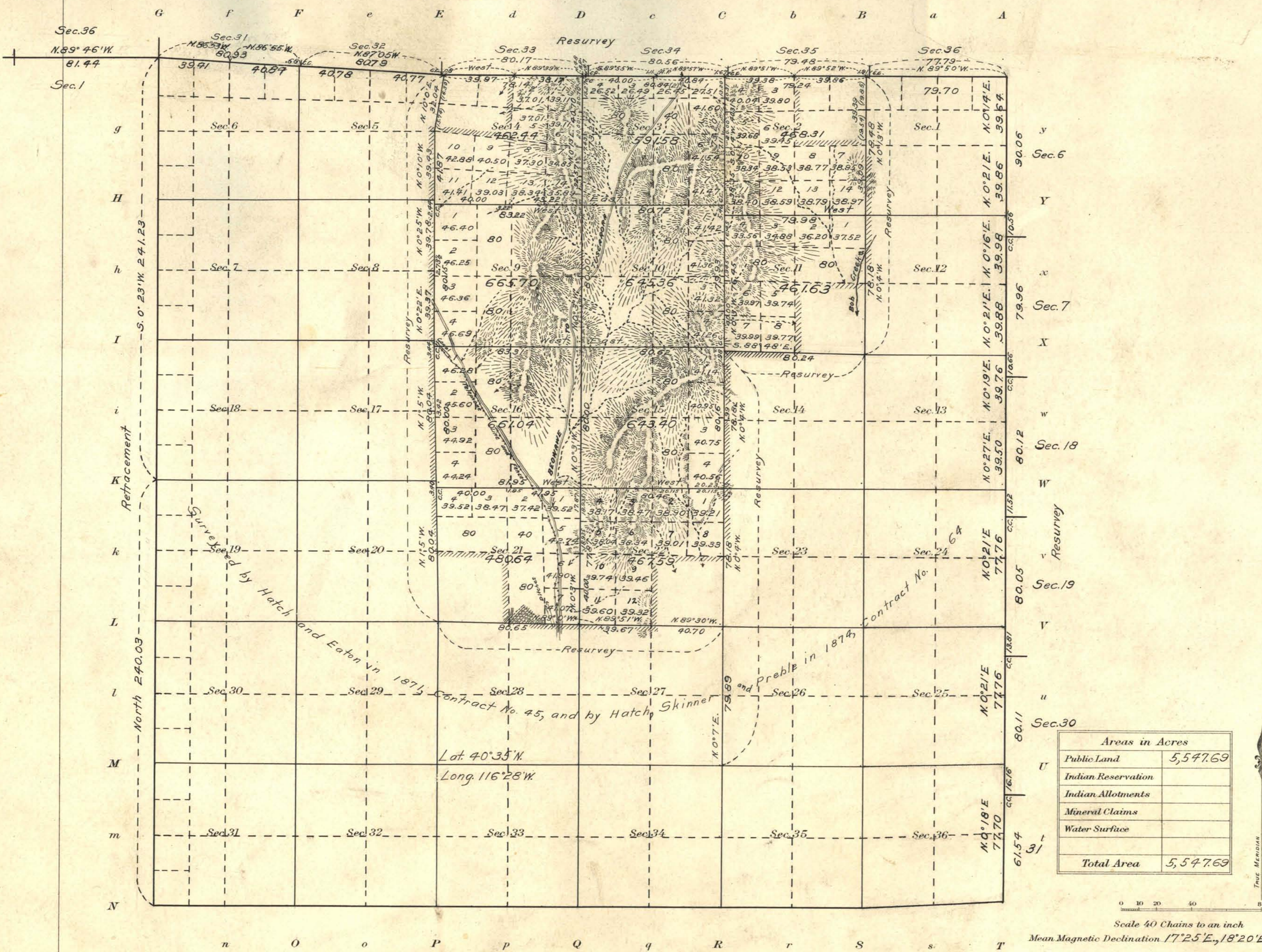


Township No. 32 North, Range No. 49 East, Mt. Diablo Meridian, Nevada



Areas in Acres	
Public Land	5,577.69
Indian Reservation	
Indian Allotments	
Mineral Claims	
Water Surface	
Total Area	5,577.69

Scale 40 Chains to an inch
Mean Magnetic Declination 17°25'E, 18°20'E.

Surveys Designated	By Whom Surveyed	Group	Amount of Surveys			When Surveyed	
			No.	Mis.	chs.	When Surveyed	Completed
North Bay-Resur.	S.P. Stewart U.S.S.	27	5	79	72	Apr. 29, 1916	May 21, 1916
West " - Retrim't	S.E. Stewart U.S.S.	"	6	1	26	Apr. 28, 1916	May 18, 1916
East " - Resur.	S.P. Stewart U.S.S.	"	5	71	84	Nov. 11, 1914	Nov. 20, 1914
Subdivisions-Resur.	S.P. Stewart U.S.S.	"	11	64	87	May 24, 1915	May 13, 1916
Subdivisions-New	S.P. Stewart U.S.S.	"	12	76	51	May 9, 1916	May 13, 1916

The above map of Township No. 32 N., Range No. 49 E. of the Mt. Diablo Meridian Nevada is strictly conformable to the field notes of the survey thereof on file in this office, which have been examined and approved
U.S. Surveyor General's Office.
Reno, Nevada, October 18, 1921

J. E. Calder
Surveyor General.