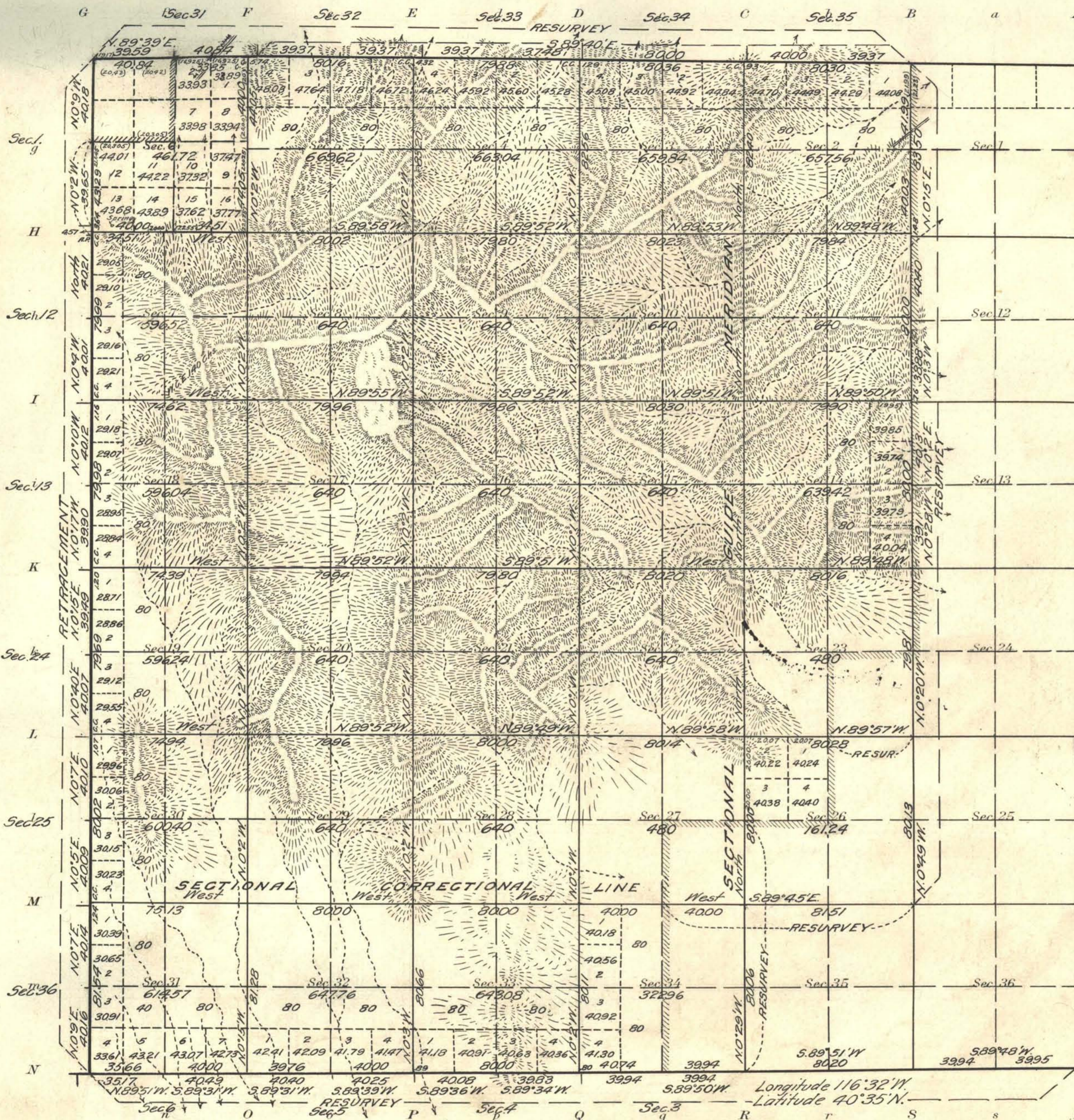


# Township N<sup>o</sup> 32 North Range N<sup>o</sup> 48 East Mt Diablo Meridian, Nevada



NOTE  
 Surveyor reports mineral in north and  
 northwest portions of Township

Areas in Acres	
Public Land	17170.01
Indian Reservation	
Indian Allotments	
Mineral Claims	
Water Surface	
<b>Total Area</b>	<b>17170.01</b>

Scale 40 Chains to an inch  
 Mean Magnetic Declination 18°15' E.

Surveys Designated	By Whom Surveyed	Group			When Surveyed			
		No.	Date of Instructions	Mts.	chs.	lks.	Begun	Completed
West Bay Retr.	H.W. Reppert and A.T. Harris	25	March 6, 1914	6	04	69	July 22, 1914	July 22, 1914
Nand. S. Bay Res.	"	8	"	8	71	49	July 20, 1914	Aug 4, 1914
Subdivision Res.	"	8	"	8	43	67	July 21, 1914	Aug 1, 1914
Subdivision	"	45	"	45	28	12	July 25, 1914	Aug 3, 1914
Correction of Sec. 6.	H.W. Reppert	1	March 8, 1915	1	44	81	March 20, 1915	March 20, 1915

The above map of Township No. 32 North Range No. 48 East of the Mt Diablo Meridian Nevada is strictly conformable to the field notes of the survey thereof on file in this office, which have been examined and approved  
 U.S. Surveyor General's Office.  
 Reno, Nevada, January 30, 1917

*John B. Sullivan*  
 Surveyor General.