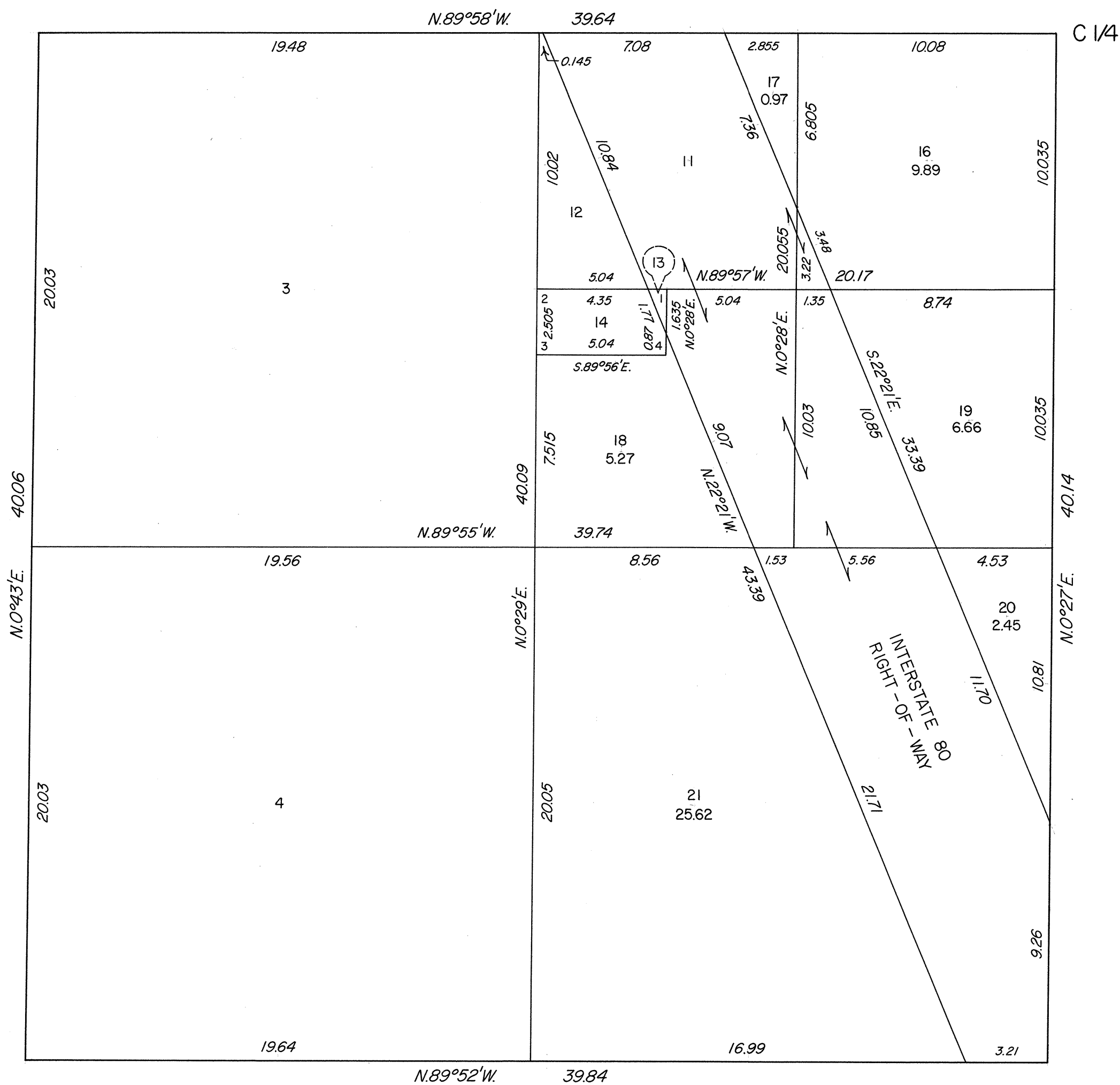


TOWNSHIP 32 NORTH, RANGE 45 EAST, OF THE MOUNT DIABLO MERIDIAN, NEVADA  
SUPPLEMENTAL PLAT OF SW. 1/4 SECTION 18



This plat, showing a subdivision of original lots 10 and 15, sec. 18, T. 32 N., R. 45 E., Mount Diablo Meridian, Nevada, is based upon the plats approved May 12, 1869, and December 21, 1872, and the plat accepted June 4, 1981.

UNITED STATES DEPARTMENT OF THE INTERIOR  
BUREAU OF LAND MANAGEMENT

Reno, Nevada August 25, 1983

This plat, showing amended lottings, is based upon the official records and, having been correctly prepared in accordance with the regulations of this Bureau, is hereby accepted.

For the Director

*Lacel E. Bland*

Acting Deputy State Director, Operations

