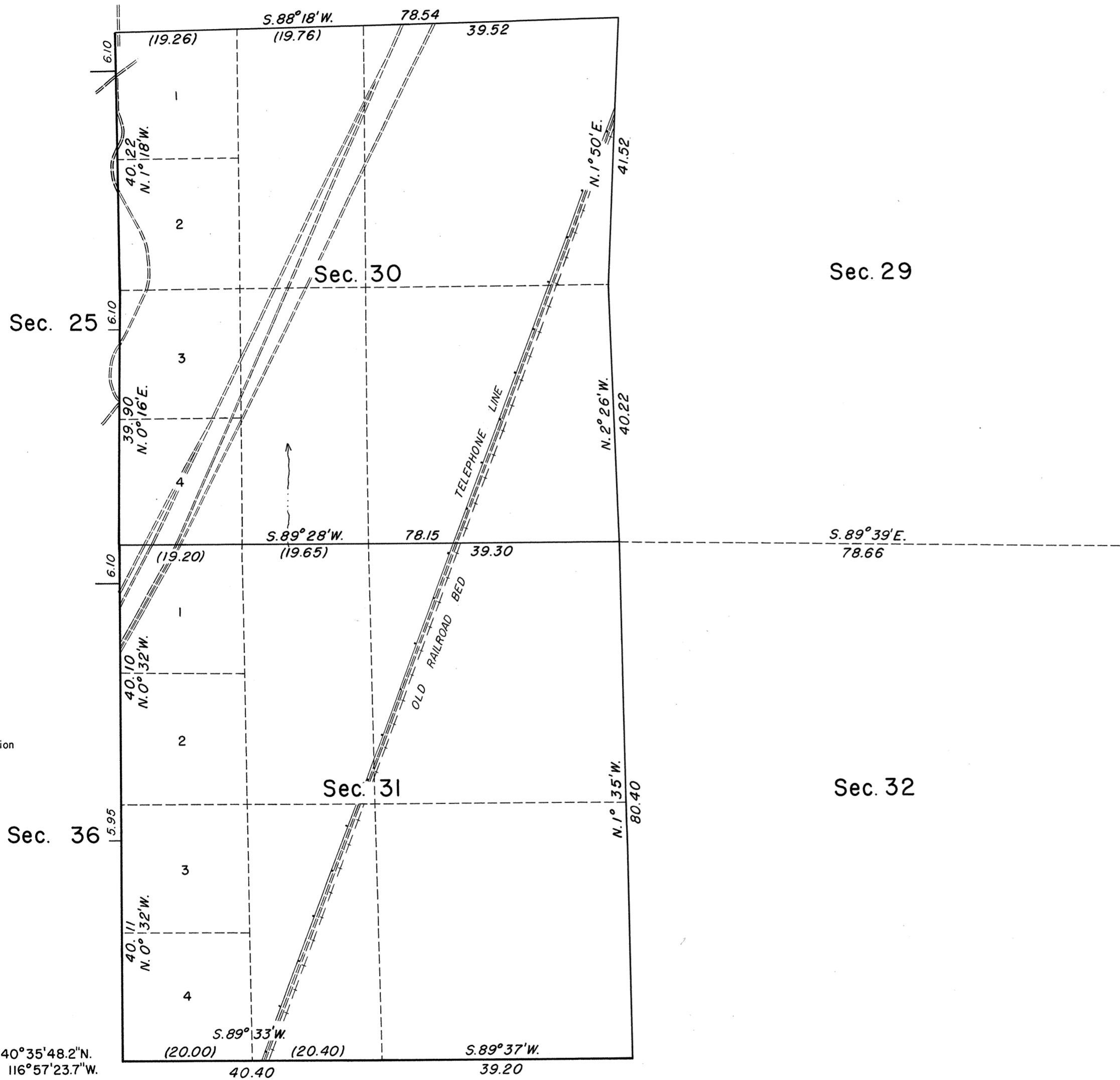


TOWNSHIP 32 NORTH, RANGE 45 EAST, OF THE MOUNT DIABLO MERIDIAN, NEVADA

DEPENDENT RESURVEY

OFFICIALLY FILED
NEVADA LAND OFFICE
10:00 AM 8/12/1971



History of the earlier surveys is contained in the field notes.

This plat represents a dependent resurvey of portions of the south and west boundaries and a portion of the subdivisional lines, designed to restore the corners in their true original locations according to the best available evidence.

Lottings and areas are as shown on the plat approved May 12, 1869.

Survey executed by James R. Munson, Cadastral Surveyor, July 11, 1966, to May 6, 1971, under Special Instructions dated June 30, 1966, and Supplemental Special Instructions dated April 7, 1971, for Group No. 439, Nevada.

UNITED STATES DEPARTMENT OF THE INTERIOR
BUREAU OF LAND MANAGEMENT
Washington, D. C. July 15, 1971

This plat is strictly conformable to the approved field notes, and the survey, having been correctly executed in accordance with the requirements of law and the regulations of this Bureau, is hereby accepted.

For the Director

Chief, Division of Cadastral Survey

