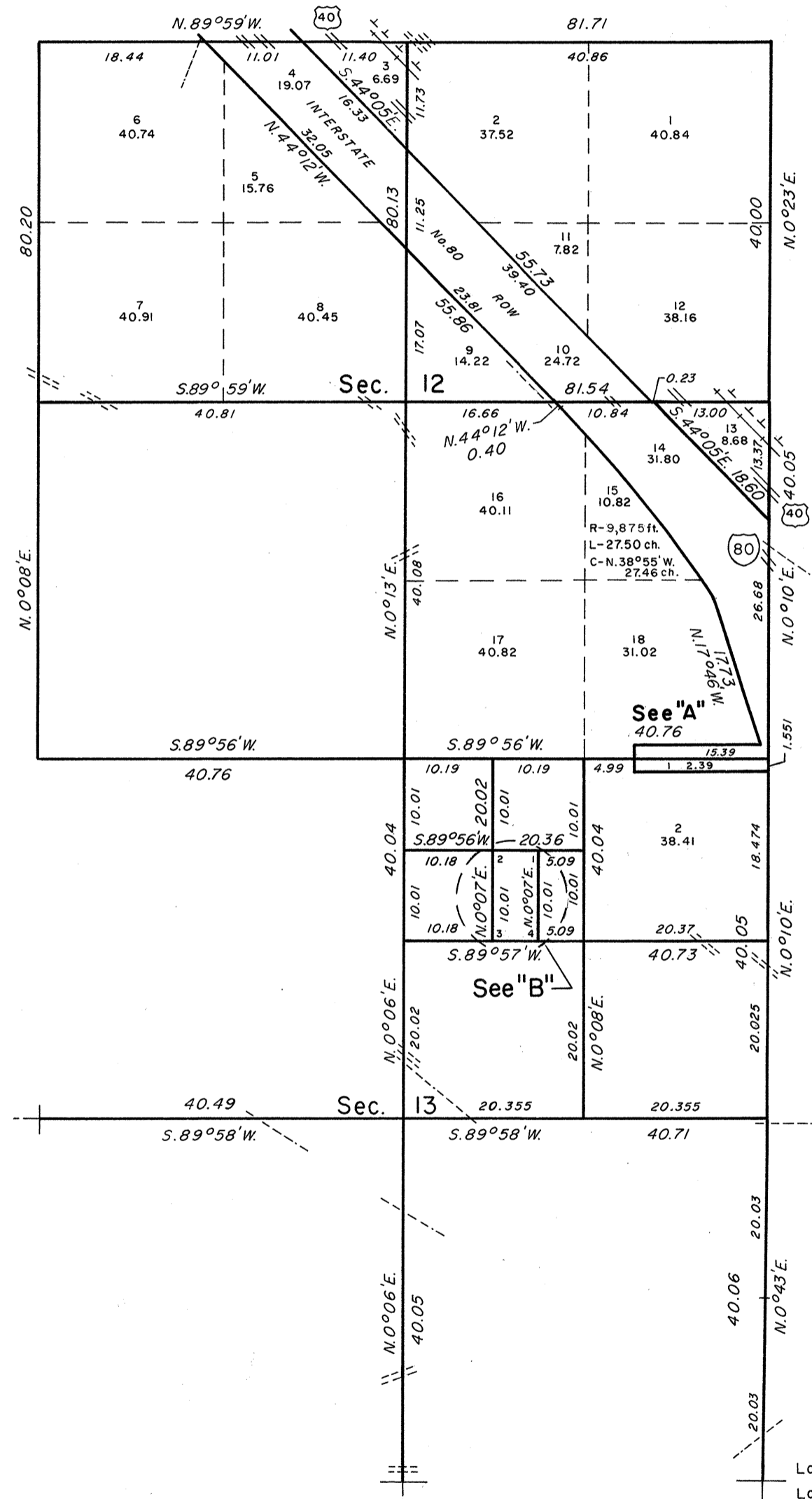


TOWNSHIP 32 NORTH, RANGE 44 EAST, OF THE MOUNT DIABLO MERIDIAN, NEVADA

DEPENDENT RESURVEY, SURVEY, AND SUBDIVISION

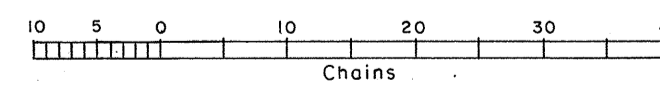
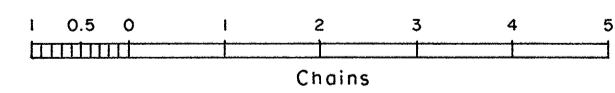
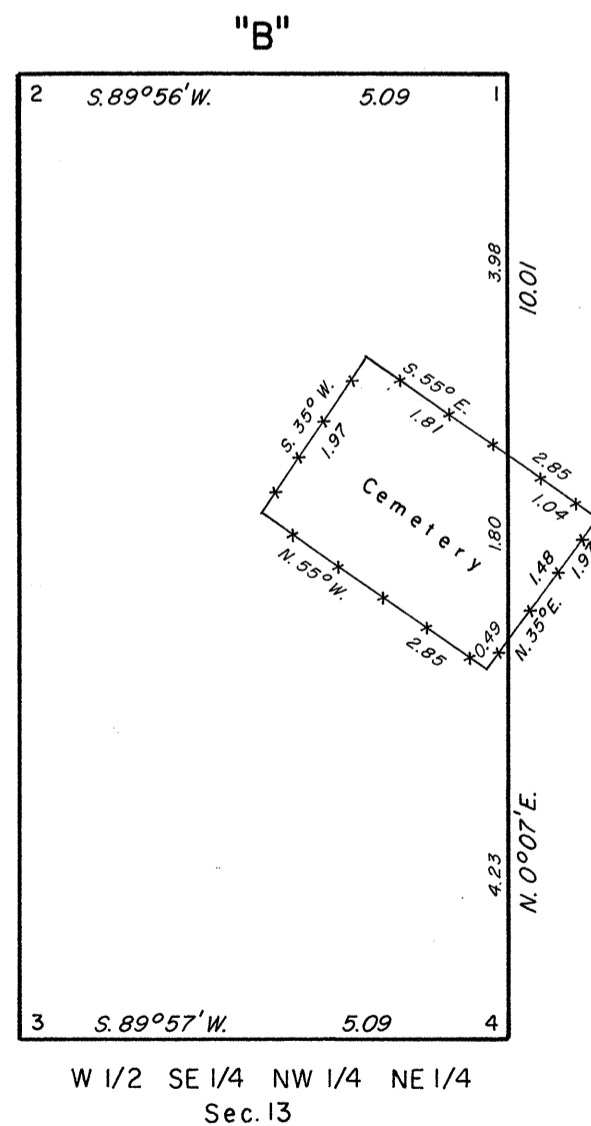
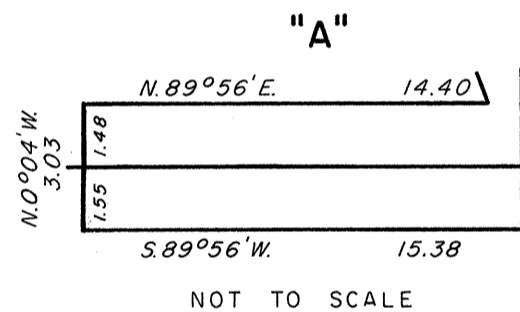
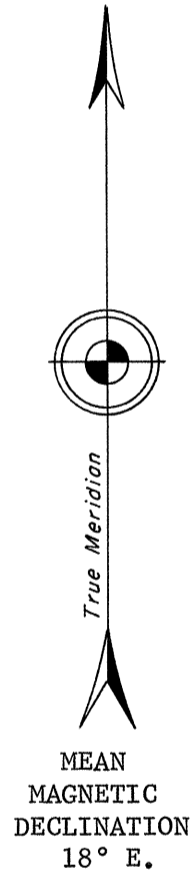


A history of surveys is contained in the field notes.

This plat represents the dependent resurvey of portions of the east boundary and subdivisional lines designed to restore the corners in their true original locations according to the best available evidence, and the subdivision of sections 12 and 13, and the survey of a portion of the right-of-way of Interstate Highway No. 80, T. 32 N., R. 44 E., Mount Diablo Meridian, Nevada.

Except as indicated hereon, the lottings and areas are as shown on the plat approved October 13, 1869.

Survey executed by William S. DeGroot, Cadastral Surveyor, beginning April 6, 1976, and completed February 2, 1977, pursuant to Special Instructions dated March 26, 1976, for Group No. 535, Nevada.



UNITED STATES DEPARTMENT OF THE INTERIOR
BUREAU OF LAND MANAGEMENT
Denver, Colorado June 4, 1981

This plat is strictly conformable to the approved field notes, and the survey, having been correctly executed in accordance with the requirements of law and the regulations of this Bureau, is hereby accepted.

For the Director

Chief, Cadastral Survey
Examination and Approval Staff

Latitude 40° 38.4' N.
Longitude 116° 57.5' W.