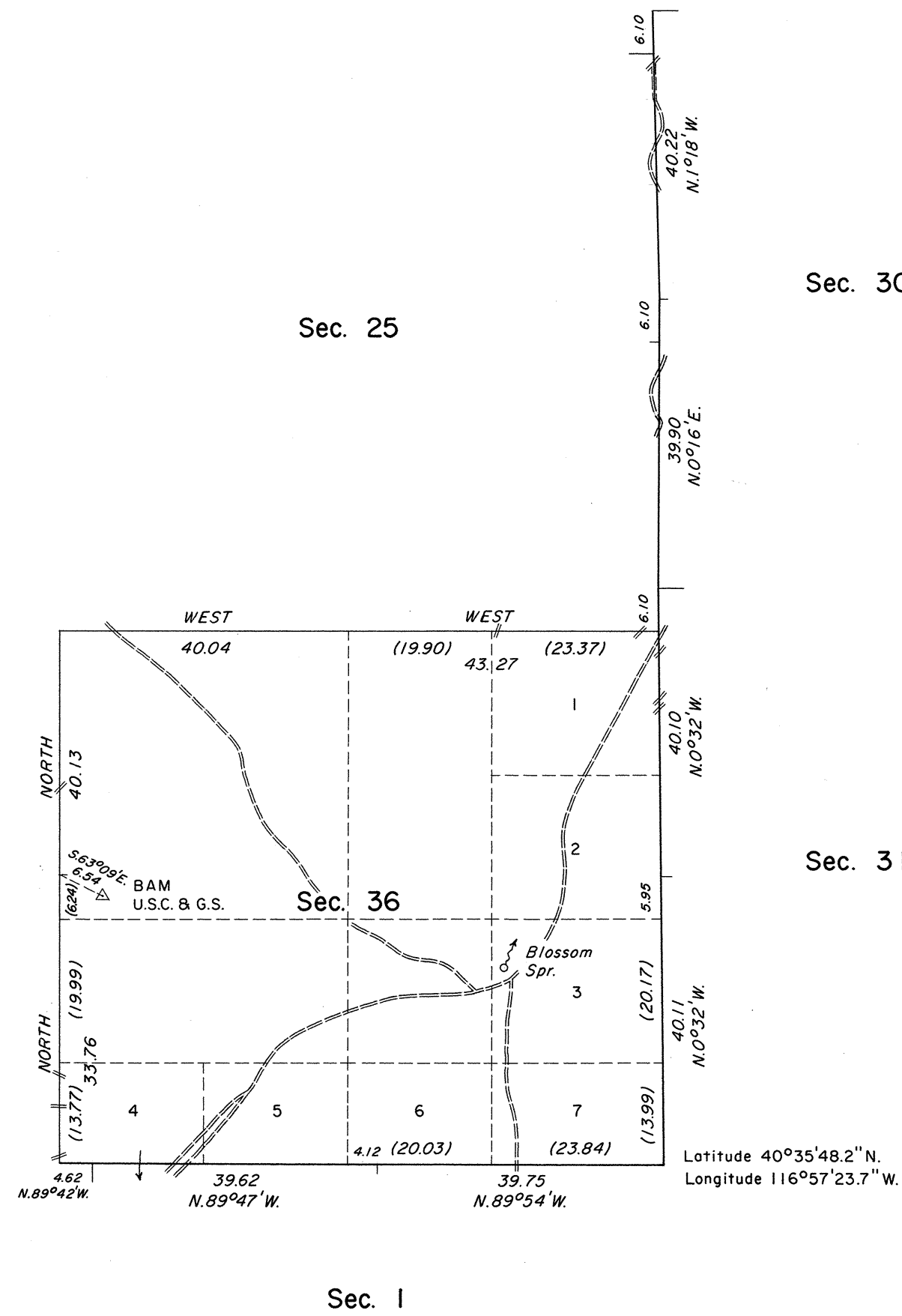
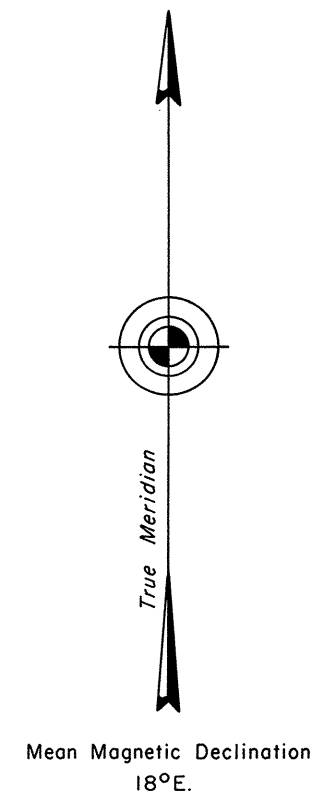


OFFICIALLY FILED  
NEVADA LAND OFFICE  
10:00 AM 8/2/1971

# TOWNSHIP 32 NORTH, RANGE 44 EAST, OF THE MOUNT DIABLO MERIDIAN, NEVADA

## DEPENDENT RESURVEY



Scale in Chains  
Area Resurveyed 617.49 Acres

History of the earlier surveys is contained in the field notes.

The dependent resurvey of portions of the east boundary and south boundary were executed concurrently under T. 32 N., R. 45 E., and T. 31 N., R. 44 E., respectively, of this group.

This plat represents a dependent resurvey of the north and west boundaries of section 36, designed to restore the corners in their true original locations according to the best available evidence.

Lotting and areas are as shown on the plat approved January 30, 1917.

Survey executed by James R. Munson, Cadastral Surveyor, July 8, 1966, to May 6, 1971, under Special Instructions dated June 30, 1966, and Supplemental Special Instructions dated April 17, 1971, for Group No. 439, Nevada.

UNITED STATES DEPARTMENT OF THE INTERIOR  
BUREAU OF LAND MANAGEMENT  
Washington, D. C. July 15, 1971

This plat is strictly conformable to the approved field notes, and the survey, having been correctly executed in accordance with the requirements of law and the regulations of this Bureau, is hereby accepted.

For the Director

Chief, Division of Cadastral Survey