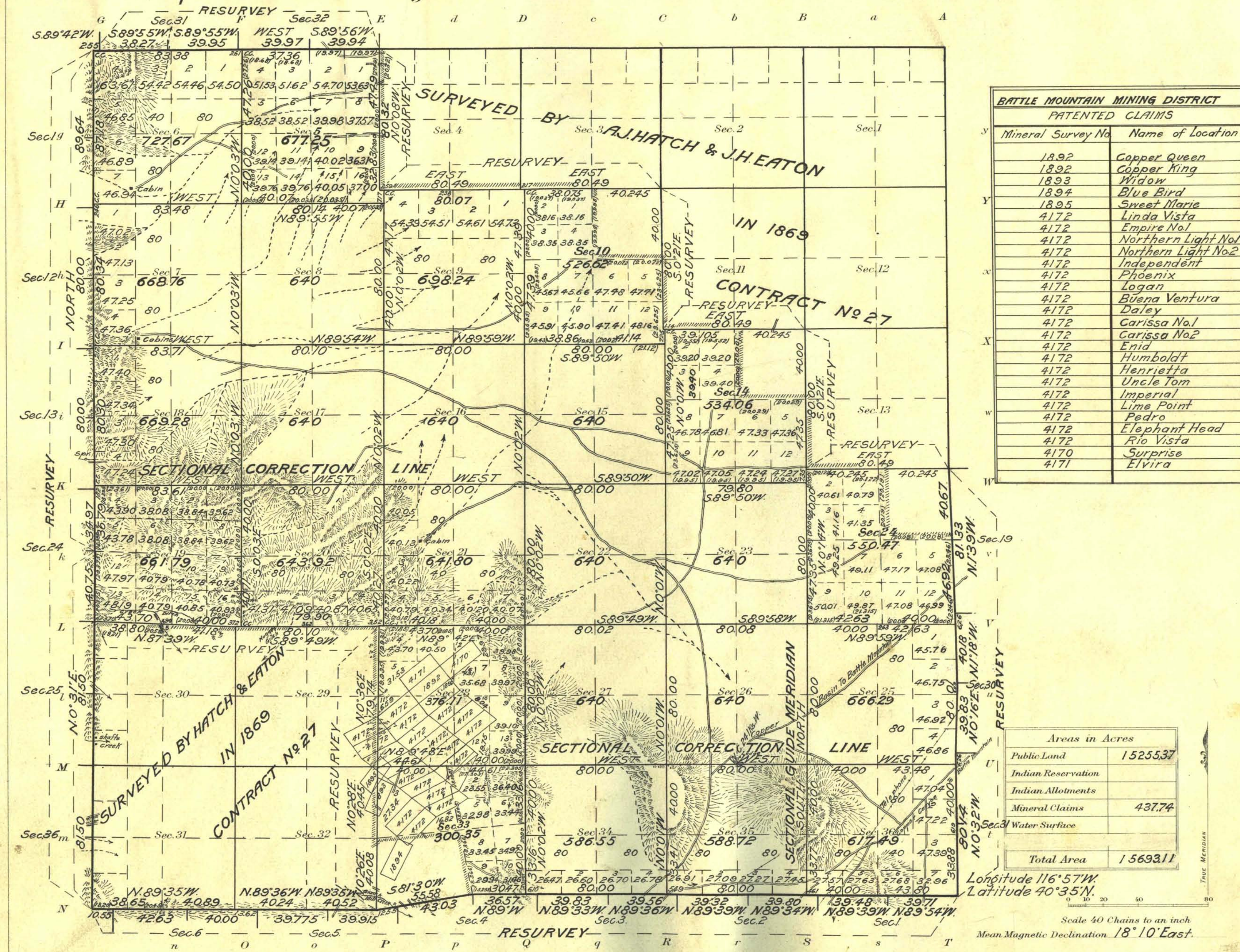


Township No 32 North Range No 44 East Mt Diablo Meridian, Nevada.



BATTLE MOUNTAIN MINING DISTRICT	
PATENTED CLAIMS	
Mineral Survey No.	Name of Location
1892	Copper Queen
1892	Copper King
1893	Widow
1894	Blue Bird
1895	Sweet Marie
4172	Linda Vista
4172	Empire No 1
4172	Northern Light No 1
4172	Northern Light No 2
4172	Independent
4172	Phoenix
4172	Logan
4172	Buena Ventura
4172	Daley
4172	Carissa No 1
4172	Carissa No 2
4172	Erin
4172	Humboldt
4172	Henrietta
4172	Uncle Tom
4172	Imperial
4172	Lime Point
4172	Pedro
4172	Elephant Head
4172	Rio Vista
4170	Surprise
4171	Elvira

Areas in Acres	
Public Land	15255.37
Indian Reservation	
Indian Allotments	
Mineral Claims	437.74
Water Surface	
Total Area	15693.11

Longitude 116° 57' W.
 Latitude 40° 35' N.
 Scale 40 Chains to an inch
 Mean Magnetic Declination 18° 10' East.

Surveys Designated	By Whom Surveyed	Group	Amount of Surveys			When Surveyed	
			No.	Mls.	chs.	lcs.	Begun
South Bdy. Resurvey	H.W. Reppert & A.T. Harris	25	6	10	17	April 25, 1914	July 6, 1914
East Bdy. Resurvey	A.T. Harris	25	3	01	48	April 25, 1914	July 8, 1914
North Bdy. Resurvey	A.T. Harris	25	2	00	68	April 29, 1914	July 13, 1914
West Bdy. Resurvey	H.W. Reppert & A.T. Harris	25	6	08	36	May 30, 1914	June 1, 1914
Subdivisions Resur.	H.W. Reppert & A.T. Harris	25	11	02	63	April 27, 1914	July 13, 1914
Sectional Correction Line	H.W. Reppert & A.T. Harris	25	6	07	09	July 7, 1914	July 13, 1914
Sectional Guide Meridian	A.T. Harris	25	1	73	77	July 7, 1914	July 8, 1914
Subdivision Lines	H.W. Reppert, A.T. Harris & W. H. Pray	25	30	42	24	July 8, 1914	May 19, 1916

The above map of Township No 32 North Range No 44 East of the Mt Diablo Meridian Nevada is strictly conformable to the field notes of the survey thereof on file in this office, which have been examined and approved.

U. S. Surveyor General's Office.
 Reno, Nevada, Jan. 30, 1917

John B. Sullivan
 Surveyor General.