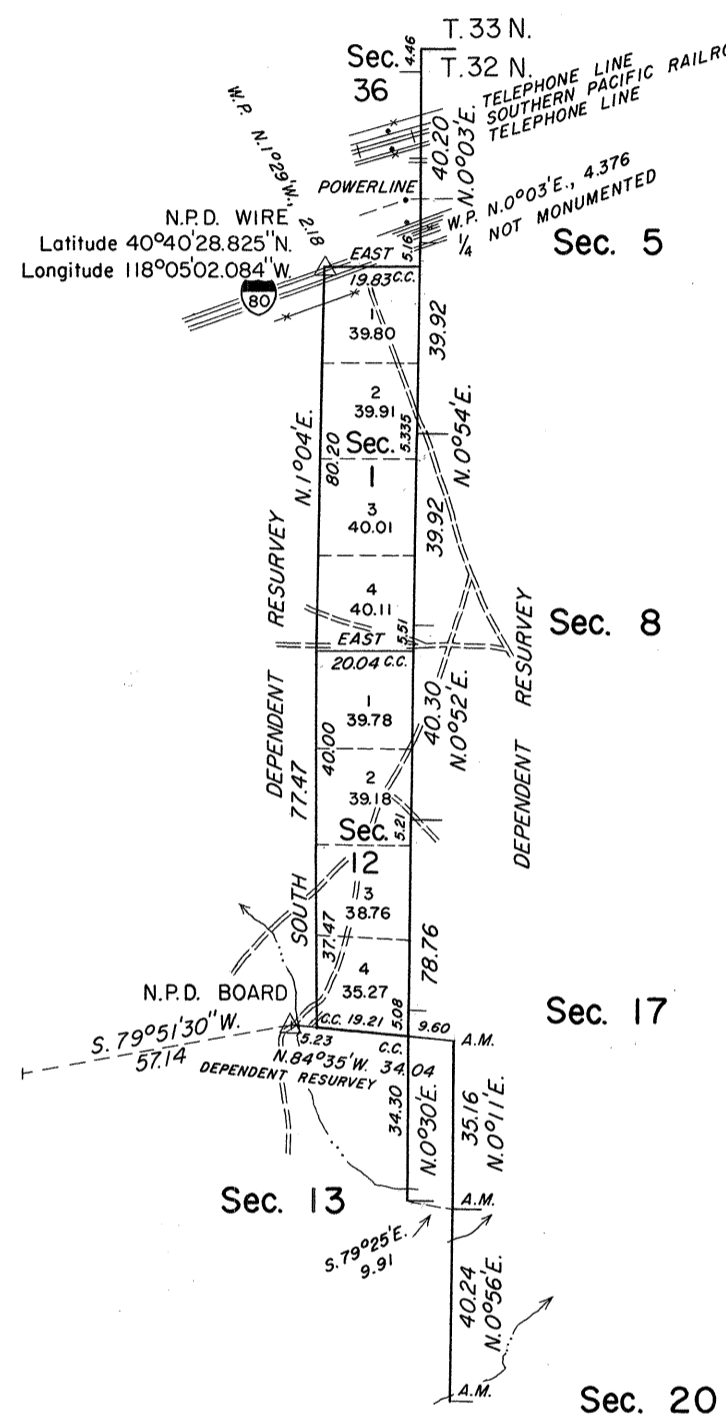
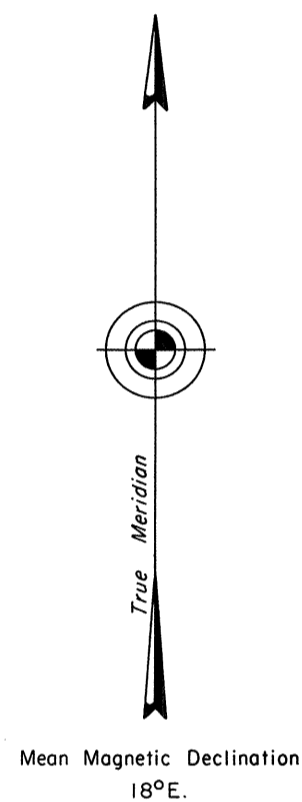


TOWNSHIP 32 NORTH, RANGE 34 1/2 EAST, OF THE MOUNT DIABLO MERIDIAN, NEVADA

OFFICIALLY FILED
NEVADA LAND OFFICE
10:00 AM May 22, 1970



A history of the earlier surveys is contained in the field notes.

This plat represents the dependent resurvey of portions of the east boundary of T. 32 N., R. 34 E., the west boundary of T. 32 N., R. 35 E., the east and north boundaries of section 13 of T. 32 N., R. 34 E., designed to restore the corners in their true original locations according to the best available evidence, and, the survey of the north boundary and the subdivision of T. 32 N., R. 34 1/2 E., Mount Diablo Meridian, Nevada.

These surveys were executed by James R. Munson, Supervisory Cadastral Surveyor, June 2, 1967, to November 28, 1967, under Supplemental Special Instructions dated May 29, 1967, for Group No. 442, Nevada.

UNITED STATES DEPARTMENT OF THE INTERIOR
BUREAU OF LAND MANAGEMENT
Washington, D. C. February 16, 1970

This plat is strictly conformable to the approved field notes, and the survey, having been correctly executed in accordance with the requirements of law and the regulations of this Bureau, is hereby accepted.

For the Director

Chief, Division of Cadastral Survey

10 5 0 10 20 40 80
Scale in Chains
Area Surveyed 312.82 Acres

T 32 N R. 34 1/2 E