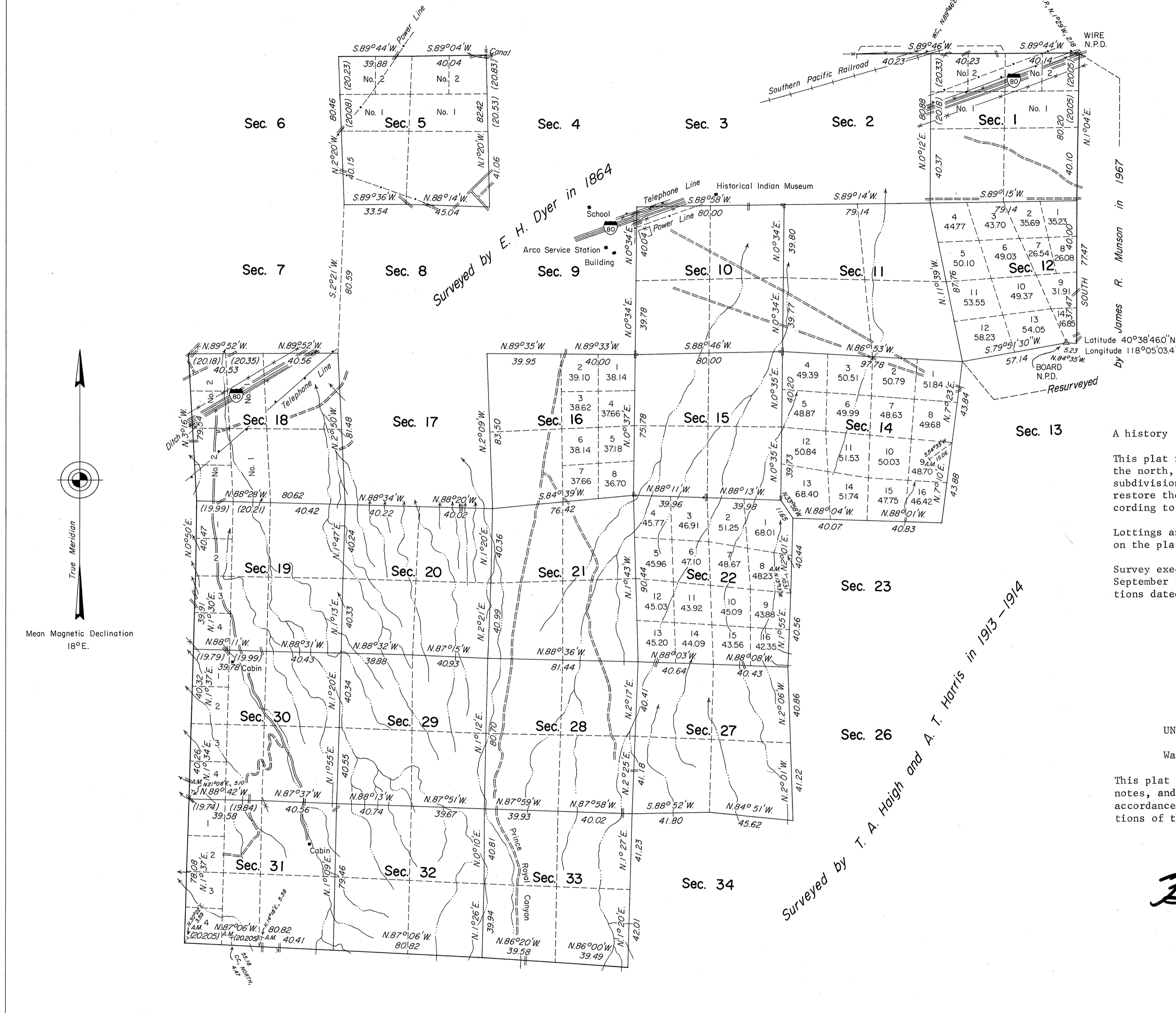


# TOWNSHIP 32 NORTH, RANGE 34 EAST, OF THE MOUNT DIABLO MERIDIAN, NEVADA

## DEPENDENT RESURVEY



A history of surveys is contained in the field notes.

This plat represents a dependent resurvey of a portion of the north, south and west boundaries and a portion of the subdivisional lines of T. 32 N., R. 34 E., designed to restore the corners in their true original locations according to the best available evidence.

Lottings and areas, except as shown hereon, are as shown on the plats approved March 22, 1864, and January 10, 1894.

Survey executed by James R. Munson, Cadastral Surveyor, September 14, 1972 to May 8, 1973, under Special Instructions dated August 29, 1972 for Group No. 491, Nevada.

UNITED STATES DEPARTMENT OF THE INTERIOR  
BUREAU OF LAND MANAGEMENT  
Washington, D.C. April 29, 1975

This plat is strictly conformable to the approved field notes, and the survey, having been correctly executed in accordance with the requirements of law and the regulations of this Bureau, is hereby accepted.

For the Director

*David W. Harbo*  
Chief, Division of Cadastral Survey

