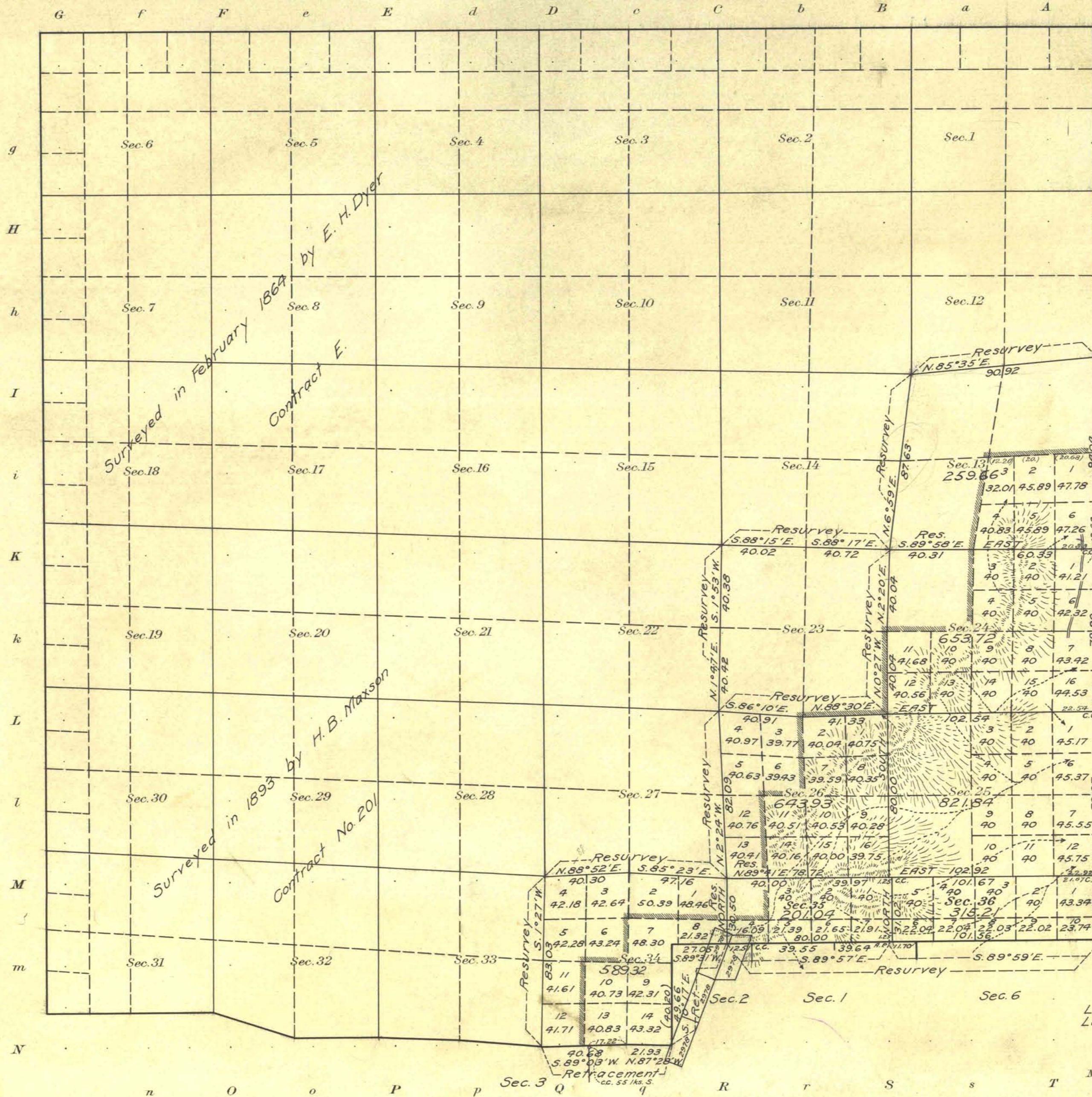


Township No. 32 North Range No. 34 East Mt. Diablo Meridian, Nevada



STAR MINING DISTRICT	
No.	Lode
2978	Sheba Extension No. 9
"	Sheba Extension No. 11
"	Snowbird

-Note-
Surveyors report mineral indications in all sections of the township except Sec. 36

Areas in Acres	
Public Land	2202.18
Indian Reservation	
Indian Allotments	
Mineral Claims	10.12
Water Surface	
C.P.R.R. Grant	1282.54
Total Area	3494.84

Latitude 40° 35' N.
Longitude 118° 09' W.
Scale 40 Chains to an inch
Mean Magnetic Declination

Surveys Designated	By Whom Surveyed	Group	Amount of Surveys			When Surveyed		
			No.	Date of instructions	Mls.	chs.	lks.	Begun
S. Boundary (res)	Thos. A. Haigh and Alex. T. Harris	17	Jan. 29, 1913	2	21	56	June 20, 1913	June 20, 1913
" " (ret)	" " "	"	" " "	1	59	32	July 7, "	July 7, "
E. " "	" " "	"	" " "	3	44	82	June 19, "	" 3, "
Subdivisions	" " "	"	" " "	6	8	15	" 20, "	Aug. 7, 1914
" (res)	" " "	"	" " "	9	73	18	July 5, "	" " "
see field notes Sub 89 also								

The above map of Township No. 32 North Range No. 34 East of the Mt. Diablo Meridian Nevada is strictly conformable to the field notes of the survey thereof on file in this office, which have been examined and approved
U. S. Surveyor General's Office.
Reno, Nevada April 10, 1915

John B. Sullivan
Surveyor General.