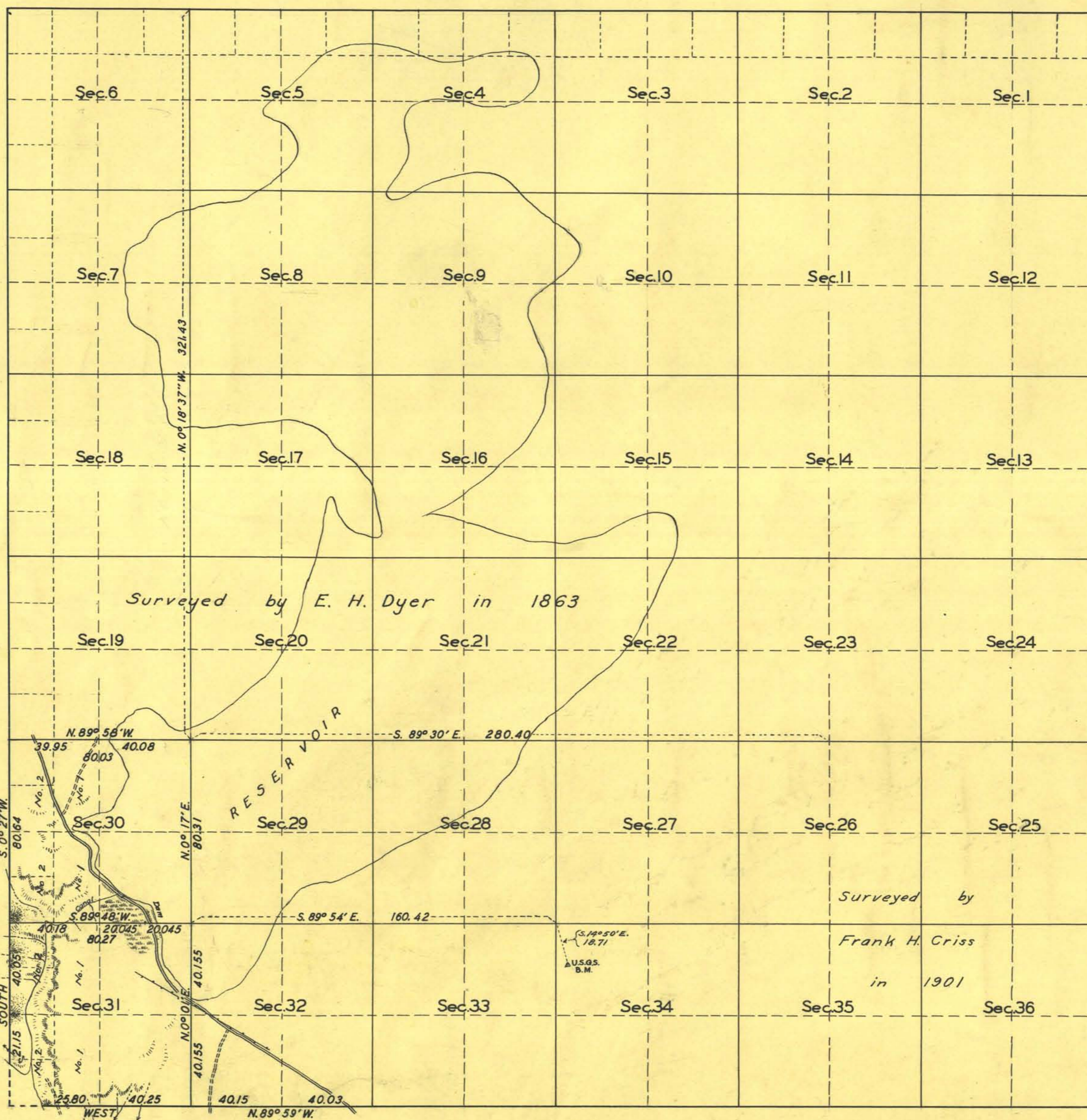


TOWNSHIP N°32 NORTH, RANGE N°33 EAST, OF THE MOUNT DIABLO MERIDIAN, NEVADA.
DEPENDENT RESURVEY OF SECTION 30 & PART OF SECTION 31



This plat of the resurvey of Sec. 30 and part of Sec. 31, T. 32 N., R. 33 E., delineates a retracement and reestablishment of the lines of the original survey as shown upon the plat approved March 25 1864, in their true original position according to the best available evidence of the position of the original corners; all differences between the measurements shown on the original plat and those derived in the retracement have been distributed proportionally between accepted corners in accordance with surveying rules; reference will be made to the original plat for the showing of the areas and more detailed descriptions of the various smaller subdivisions.

Surveyed by
Frank H. Criss
in 1901

Scale: 40 Chains to an Inch.

AREA RESURVEYED, 1240.14 ACRES

LINES DESIGNATED	BY WHOM SURVEYED	N°	GROUP DATE	MILEAGE		WHEN SURVEYED	
				MLS.	CHS.	BEGUN	COMPLETED
Exterior	Emil Voigt	258	Jan. 16 1939	3	4807	Jan. 23 1939	Feb. 2 1939
Subdivisional	Cadastral Engineer			4	0.92		

Office of Supervisor of Surveys
Denver, Colorado, March 13, 1939
The above plat of Township No. 32 North, Range No. 33 East of the Mount Diablo Meridian, Nevada is strictly conformable to the field notes of the survey thereof which have been examined and approved.

Emil Voigt
Supervisor of Surveys

UNITED STATES
DEPARTMENT OF THE INTERIOR
GENERAL LAND OFFICE
Washington, D.C., Jan. 27, 1940

The survey represented by this plat having been correctly executed in accordance with the requirements of law and the regulations of this office is hereby accepted.

Joel David Wolfson
Acting Assistant Commissioner