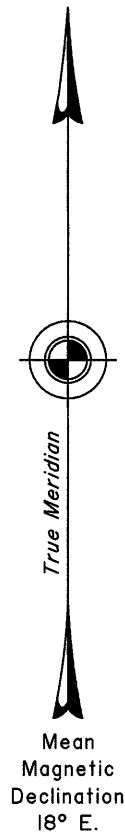
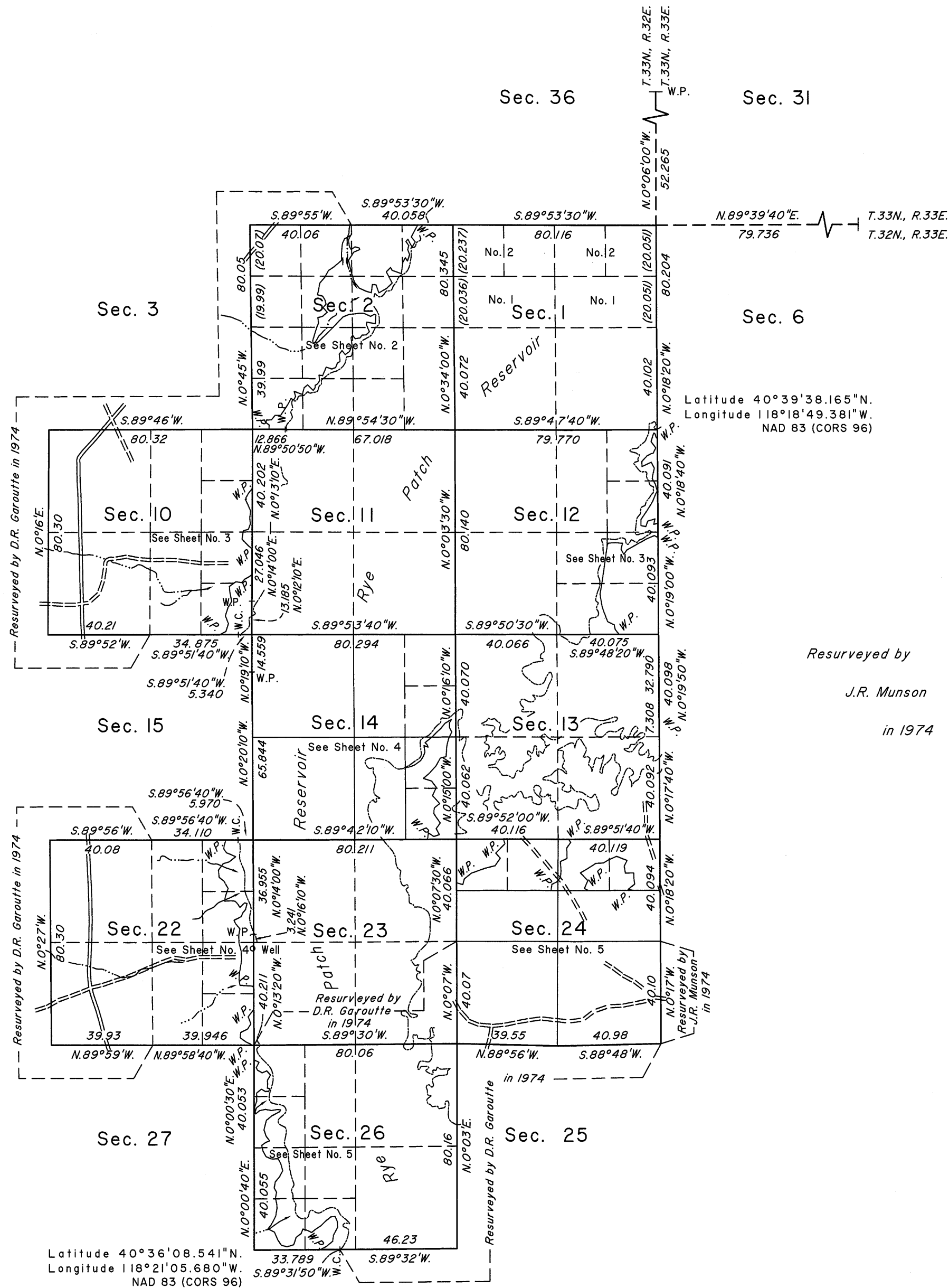


TOWNSHIP 32 NORTH, RANGE 32 EAST, OF THE MOUNT DIABLO MERIDIAN, NEVADA
DEPENDENT RESURVEY AND SUBDIVISION

OFFICIALLY FILED
NEVADA STATE OFFICE
at 10:00 AM on May 9, 2012



Resurveyed by
D.R. Garoutte
in 1974



Resurveyed by
J.R. Munson
in 1974

A history of the surveys is contained in the field notes.

This plat, in five sheets, represents the dependent resurvey of portions of the east and north boundaries and a portion of the subdivisional lines designed to restore the corners in their true original locations according to the best available evidence, the subdivision of sections 14 and 24, and the survey of the meanders of portions of the 4144 foot contour line, Township 32 North, Range 32 East, Mount Diablo Meridian, Nevada.

Except as indicated hereon, the lottings and areas are as shown on the plat approved March 19, 1864, and the plat accepted January 9, 1978.

Survey executed by Don R. Aschenbach, Cadastral Surveyor, beginning September 2, 2009, and completed October 5, 2011, under Special Instructions dated August 28, 2009, for Group No. 884, Nevada.

UNITED STATES DEPARTMENT OF THE INTERIOR
BUREAU OF LAND MANAGEMENT

Reno, Nevada May 3, 2012

This plat is strictly conformable to the approved field notes, and the survey, having been correctly executed in accordance with the requirements of law and the regulations of this Bureau, is hereby accepted.

For the Director

Chief Cadastral Surveyor, Nevada

