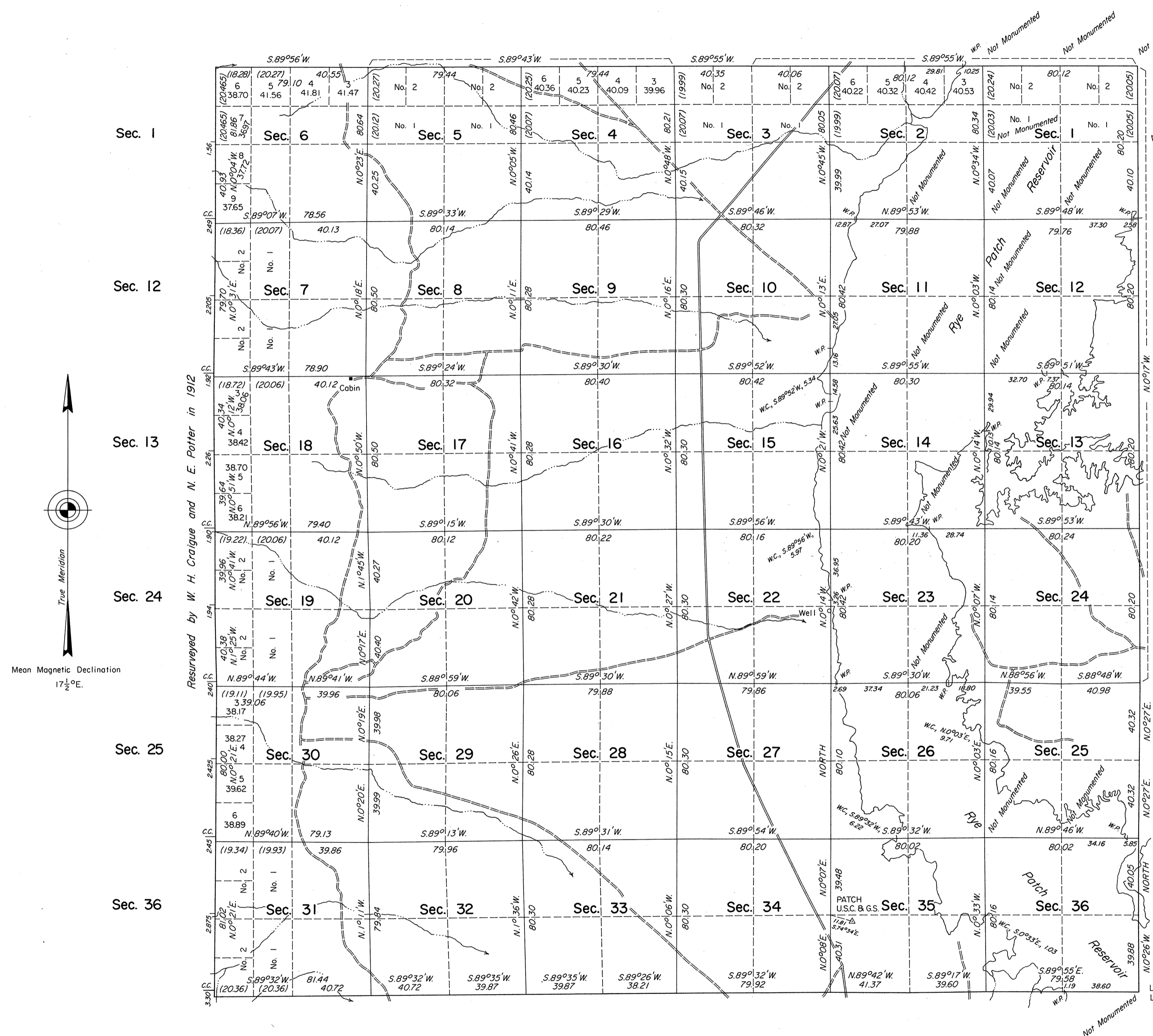


OFFICIALLY FILED  
NEVADA STATE OFFICE  
10:00 a.m., February 14, 1978

# TOWNSHIP 32 NORTH, RANGE 32 EAST, OF THE MOUNT DIABLO MERIDIAN, NEVADA

## DEPENDENT RESURVEY



True Meridian

Mean Magnetic Declination  
17 1/2° E.

A history of surveys is contained in the field notes.

A dependent resurvey of the east and north boundaries and a portion of the south boundary was executed concurrently under Group No. 498.

This plat represents a dependent resurvey of a portion of the south boundary and the subdivisional lines of T. 32 N., R. 32 E., designed to restore the corners in their true original locations according to the best available evidence, and a remarking of certain corners on the east boundary of T. 32 N., R. 31 E.

Lottings and areas, except as indicated hereon, are as shown on the plat approved March 19, 1864.

Survey executed by Duane R. Garoutte, Cadastral Surveyor, May 29 to July 15, 1974, under Special Instructions dated May 14, 1974, for Group No. 510, Nevada.

UNITED STATES DEPARTMENT OF THE INTERIOR  
BUREAU OF LAND MANAGEMENT  
Washington, D.C. January 9, 1978

This plat is strictly conformable to the approved field notes, and the survey, having been correctly executed in accordance with the requirements of law and the regulations of this Bureau, is hereby accepted.

For the Director

*Bernard W. [Signature]*  
Chief, Division of Cadastral Survey

Latitude 40°35'17.0"N  
Longitude 118°08'45.0"W

