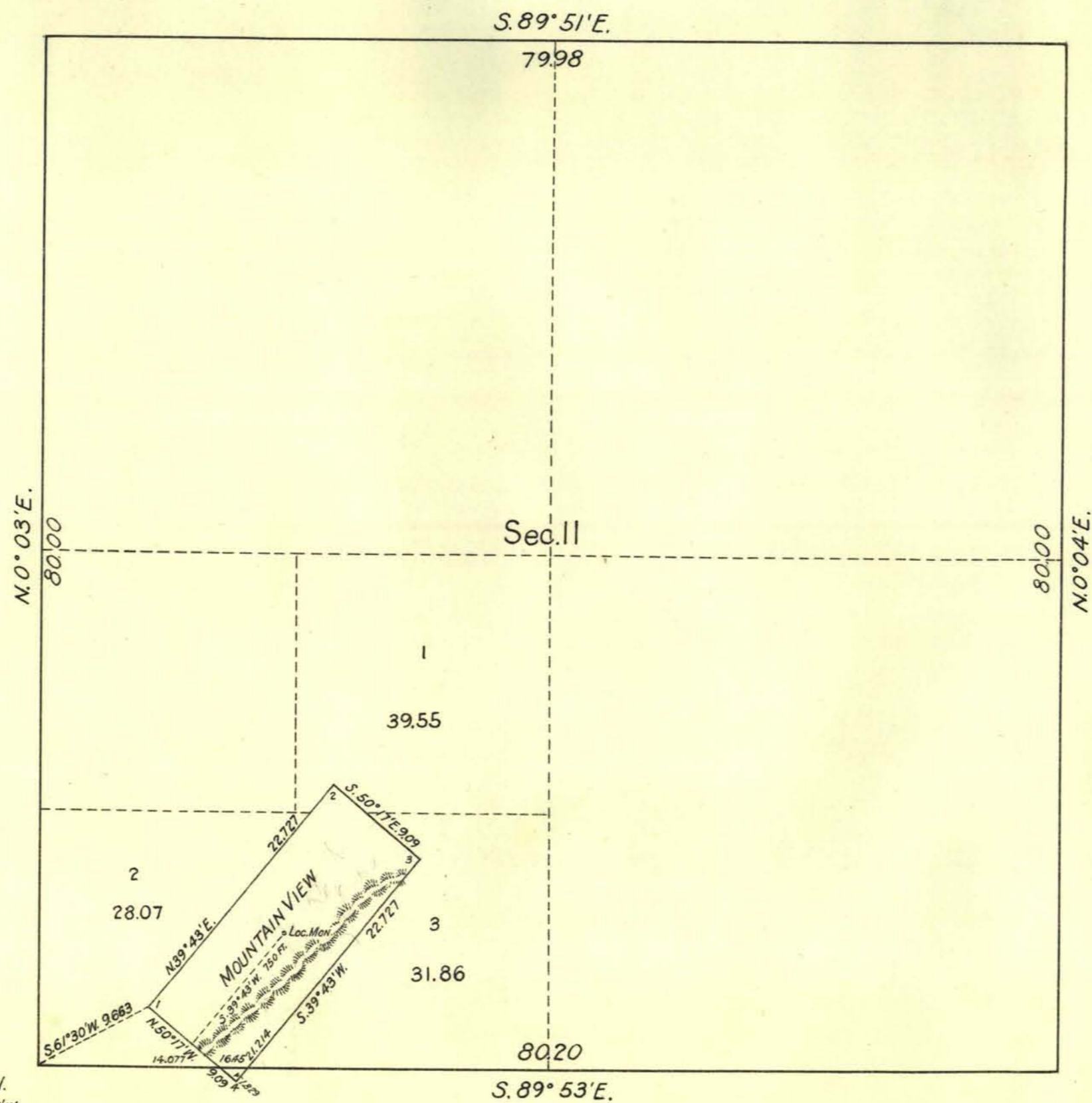


TOWNSHIP N°32 NORTH, RANGE N°31 EAST OF THE MOUNT DIABLO MERIDIAN, NEVADA.

SUPPLEMENTAL PLAT OF SEC II.

SCALE 10 CHAINS TO 1 INCH.



Latitude: 40° 38' N.  
Longitude: 118° 28' W.

Metes and bounds survey of the Mountain View lode claim, land classified as Mineral bearing, and connecting line, deriving lots of fractional areas of adjoining non mineral land to accommodate the Central Pacific Railway Company's selection list No. 83, Carson City 09884, executed by George W. Ridgway, U.S. Cadastral Engineer June 15-17, 1929, under Special Instructions dated July 11, 1924, for Group #121, Nevada, authorized by the Commissioners letter "E" dated May 6, 1924.  
Boundaries of Sec. II, surveyed by William H. Craigue, U.S. Surveyor and Newton E. Potter, Transitman in 1912, as shown upon plat approved Jan. 14, 1914.

Office of U.S. Supervisor of Surveys  
Denver, Colorado, Feb. 27, 1931.  
The above plat of Township No. 32 North, Range No. 31 East of the Mount Diablo Meridian, Nevada, is strictly conformable to the field notes of the survey thereof which have been examined and approved.

*William H. Craigue*  
U.S. Supervisor of Surveys.

DEPARTMENT OF THE INTERIOR  
GENERAL LAND OFFICE

Washington D.C., June 2, 1931  
The survey represented by this plat having been correctly executed in accordance with the requirements of law and the regulations of this office is hereby accepted.

*Thomas C. Havell*  
Assistant Commissioner.

N

*L.R.H.*  
40