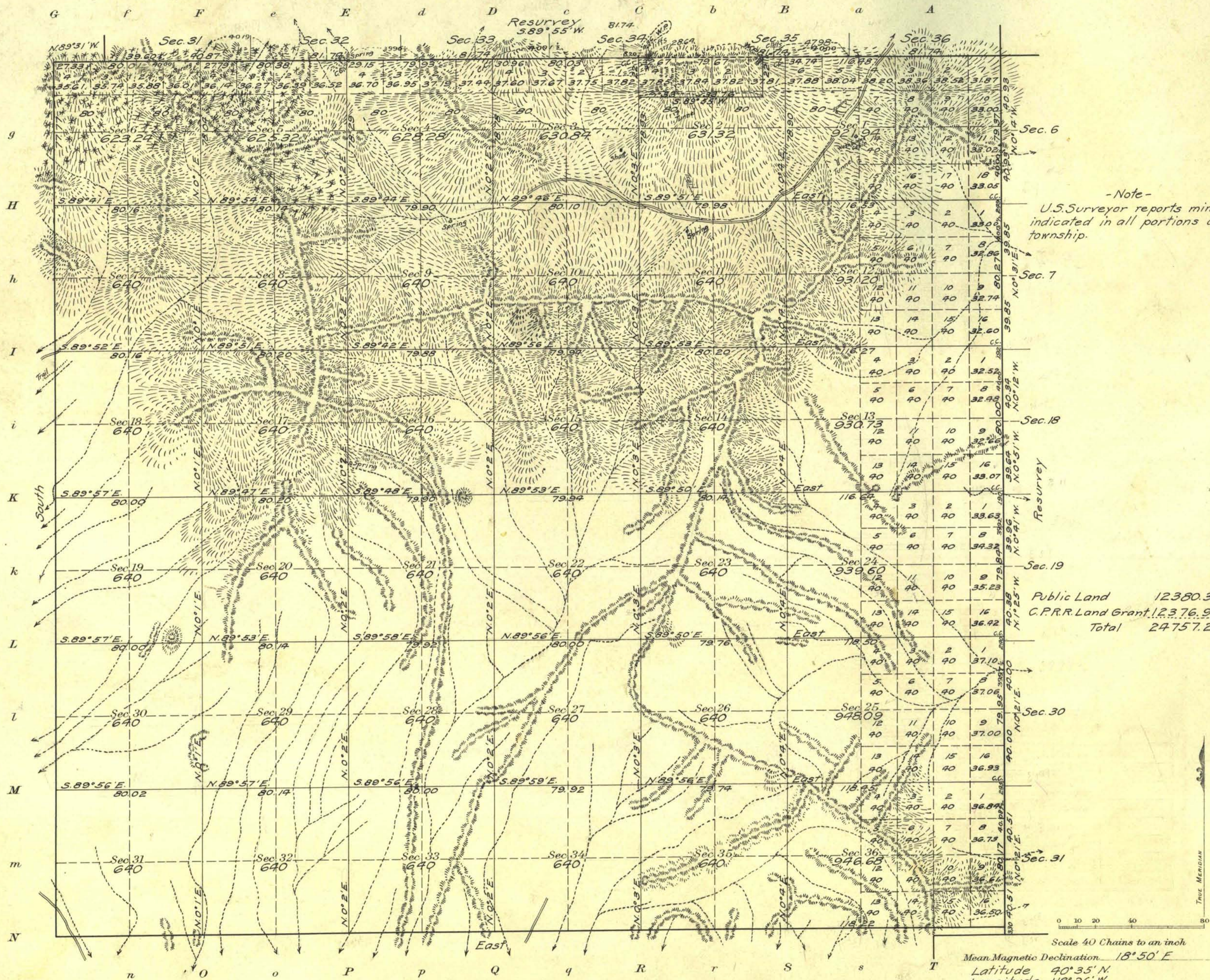


Township No. 32 North Range No. 31 East Mt. Diablo Meridian, Nevada



-Note-
U.S. Surveyor reports mineral
indicated in all portions of the
township.

Public Land 12380.32 Acres
C.P.R.R. Land Grant 12376.92 "
Total 24757.24 "

Scale 40 Chains to an inch
Mean Magnetic Declination 18° 50' E
Latitude 40° 35' N
Longitude 118° 26' W

Surveys Designated	By Whom Surveyed	Group		Amount of Surveys		When Surveyed	
		No.	Date	Mis. chs.	Ucs.	Begun	Completed
N. & E. Boundaries (resur)	William H. Craigie and Newton E. Potter	14	Aug. 22, 1911	12	36 10	Sept. 17, 1912	Sept. 28, 1912
S. & W. Boundaries	" "	"	"	12	35 99	Aug. 10, "	" 27, "
Subdivisions	" "	"	"	62	19 81	Sept. 11, "	" 24, "

The above map of Township No. 32 North Range No. 31 East of the Mt. Diablo Meridian Nevada is strictly conformable to the field notes of the survey thereof on file in this office, which have been examined and approved

U. S. Surveyor General's Office.
Reno, Nevada January 14, 1914

Matthew Kyle
Surveyor General.