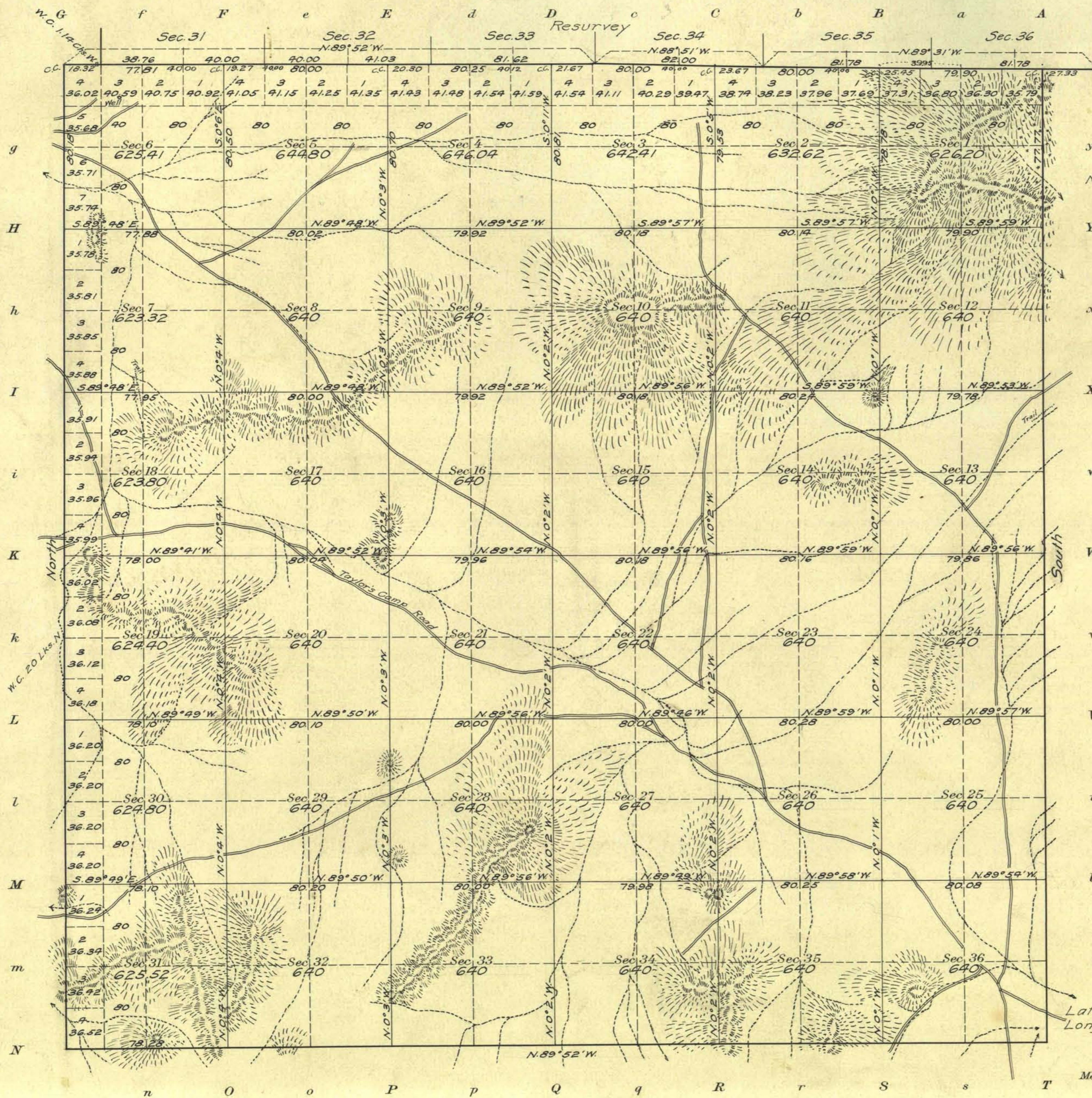


Township N^o. 32 North Range N^o. 30 East M^t Diablo Meridian, Nevada



-Note-
Transitman reports placer gold in
N.W. portion of township.

Areas in Acres	
Public Land	11472.67
Indian Reservation	
Indian Allotments	
Mineral Claims	
Water Surface	
C.P.R.R. Land Grant	11466.65
Total Area	22939.32

Latitude 40° 35' N
Longitude 118° 33' W
Scale 40 Chains to an inch
Mean Magnetic Declination 18° 30' E.

Surveys Designated	By Whom Surveyed	Group		Amount of Surveys			When Surveyed	
		No.	Date	Mls.	chs.	lks.	Began	Completed
W.S.&E. Boundaries	William H. Craigie and Newton E. Potter	14	Aug 22, 1911	17	76	23	Aug 31, 1912	Sept 5, 1912
N. Boundary (resurvey)	" "	6	" "	6	25	29	Sept 1, "	" 4, "
Subdivisions	" "	59	" "	59	71	72	" 5, "	" " "

The above map of Township No. 32 North Range No. 30 East of the Mt. Diablo Meridian Nevada is strictly conformable to the field notes of the survey thereof on file in this office, which have been examined and approved
U.S. Surveyor General's Office.
Reno, Nevada January 14, 1914

Marshall Kyle
Surveyor General.