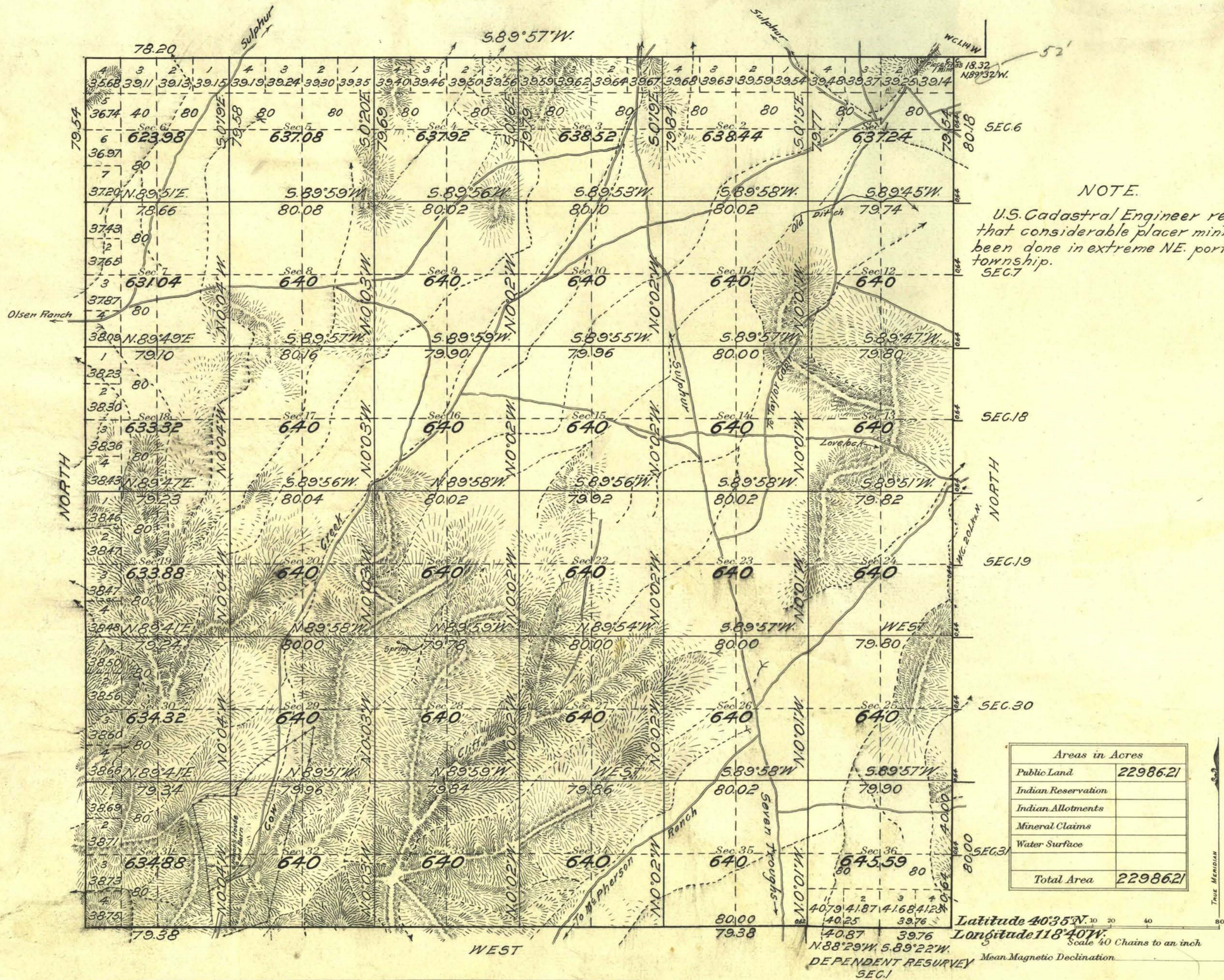


Township N° 32 North Range N° 29 East M¹ Diablo Meridian, Nevada.



Surveys Designated	By Whom Surveyed	Group No.	Date	Amount of Surveys			When Surveyed	
				Mls.	chs.	fks.	Began	Completed
North Bdy.	George W. Ridgway	101	June 6, 1922	5	78	20	Oct 16, 1922	Oct 17, 1922
West Bdy.	U.S. Cadastral Engineer			5	79	54	Oct 14, 1922	Oct 14, 1922
South Bdy.	Engineer			4	78	76	Oct 12, 1922	Oct 14, 1922
S. Bdy. Dep. Resur.				1	00	63	Oct 11, 1922	Oct 11, 1922
Subdivisions				59	73	00	Oct 18, 1922	Nov. 2, 1922
Connections E. Bdy.				6	80		Oct 10, 1922	Oct 12, 1922

The above map of Township No. 32 North Range No. 29 East of the M¹ Diablo Meridian, Nevada is strictly conformable to the field notes of the survey thereof on file in this office, which have been examined and approved.

U.S. Surveyor General's Office.
Reno, Nevada, Jan. 18, 1924.

J. E. Calder
Surveyor General.