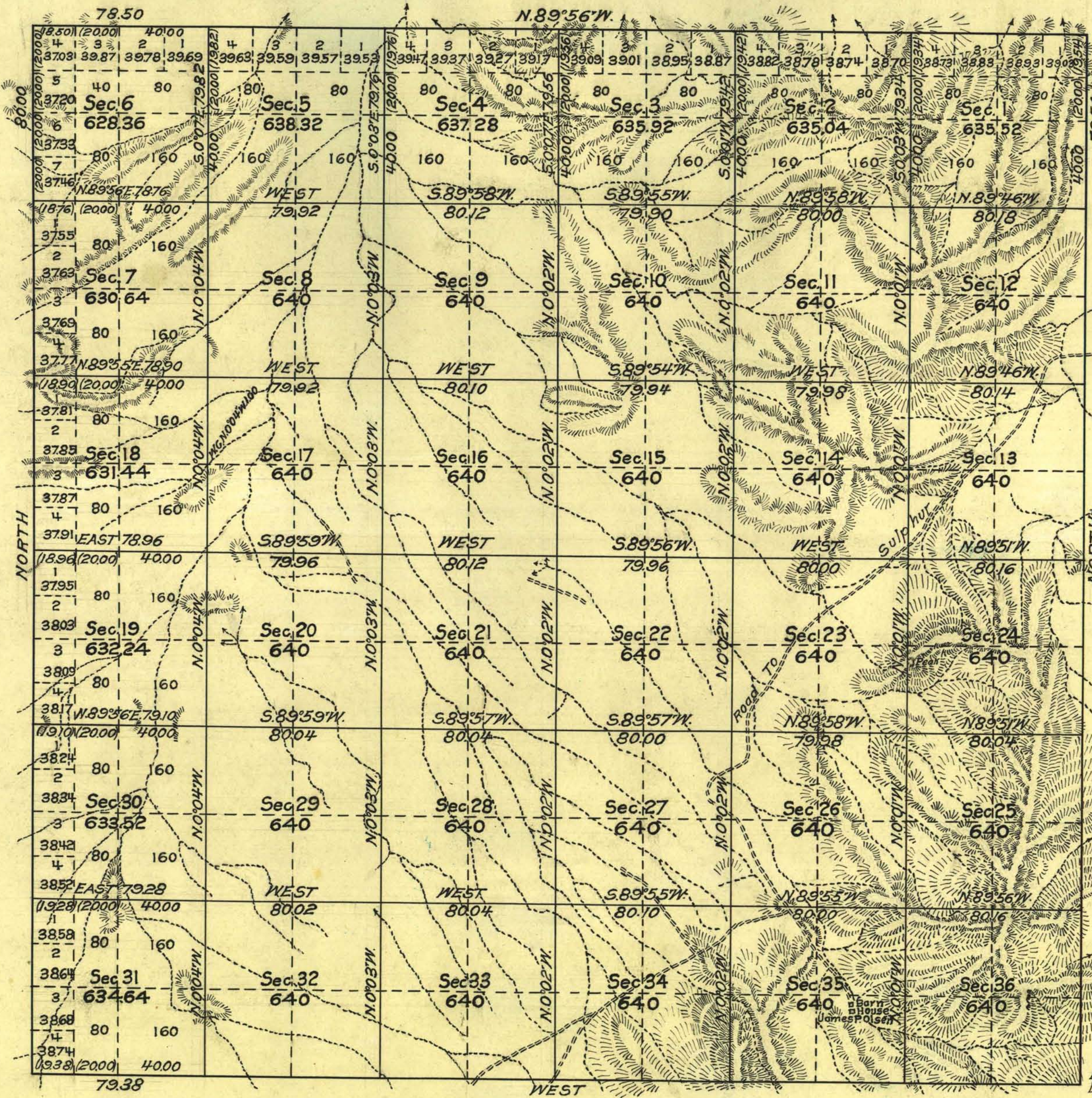
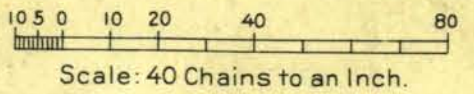


# TOWNSHIP N° 32 NORTH RANGE N° 28 EAST MOUNT DIABLO MERIDIAN NEVADA.



Latitude 40°35'N.  
Longitude 118°46'W.

Mean Magnetic Declination,



Area Surveyed, 22,972.92 Acres.

Office of U.S. Supervisor of Surveys  
 Denver, Colorado, Oct. 25, 1928.  
 The above plot of Township No. 32 North Range No. 28 East  
 of the Mount Diablo Meridian, Nevada  
 is strictly conformable to the field notes of the survey  
 thereof which have been examined and approved.

DEPARTMENT OF THE INTERIOR  
 GENERAL LAND OFFICE  
 Washington, D.C., February 18, 1929.  
 The survey represented by this plat  
 having been correctly executed in accordance  
 with the requirements of law and the regulations  
 of this office, is hereby accepted.

LINES DESIGNATED	BY WHOM SURVEYED	GROUP No	DATE	MILEAGE		WHEN SURVEYED	
				MLS.	CHS.	BEGUN	COMPLETED
Exterior E. Bdy	George W. Ridgway	101	June 6, 1922	5	7954	Oct. 11, 1922	Oct. 14, 1922
Subdivisional	George W. Ridgway	112	Aug. 13, 1923	59	7372	July 18, 1927	Aug. 5, 1927
Exterior	George W. Ridgway	112	Aug. 13, 1923	17	7788	July 8, 1927	July 14, 1927
Miscellaneous							

*Wm. P. Johnson*  
 U.S. Supervisor of Surveys.

*Wm. C. Havell*  
 Assistant Commissioner.

A.R.S. Orig., J.R.C. Comp.

*T.32 N.R.28 E.*