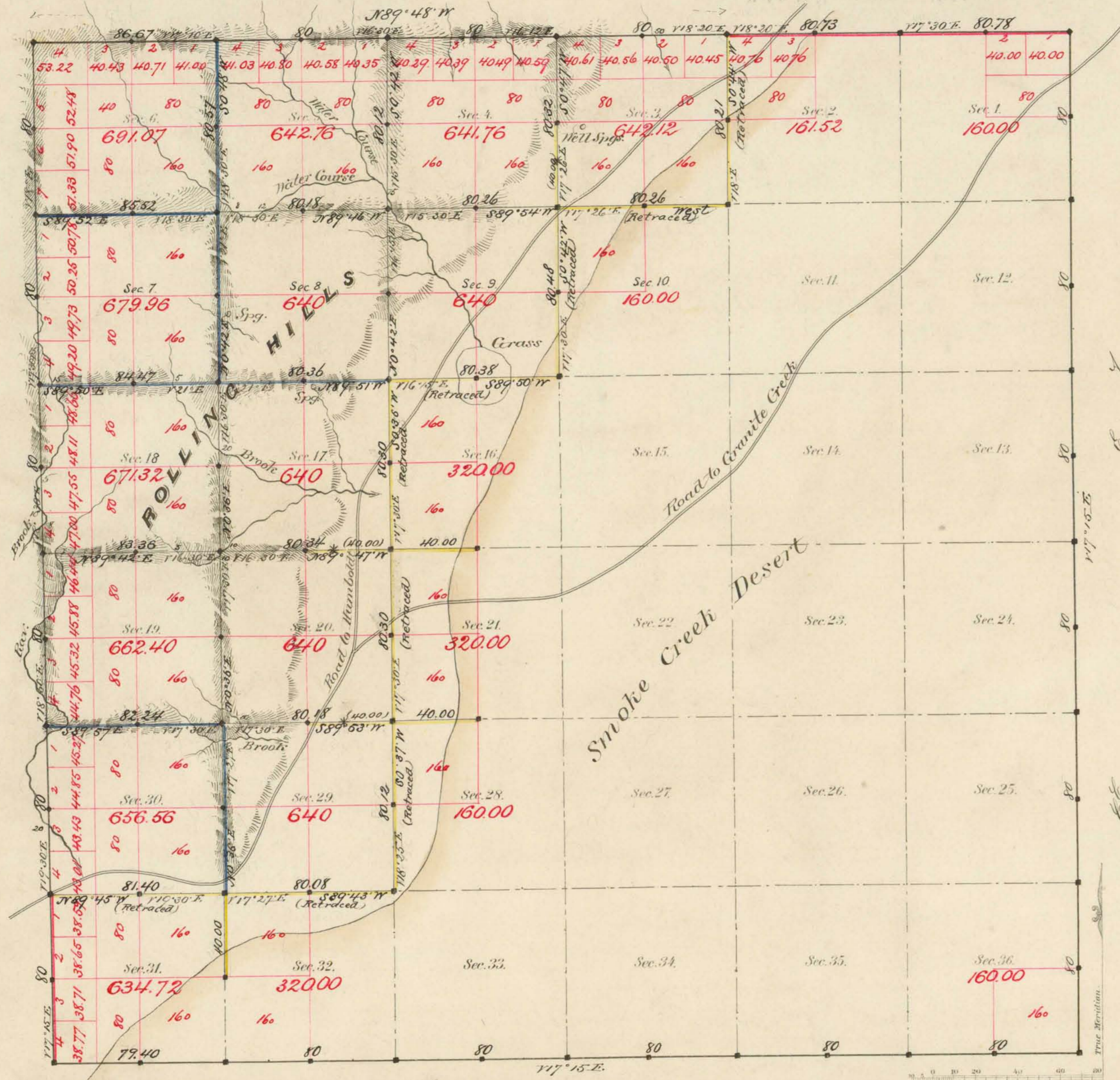


TOWNSHIP N^o 32 NORTH RANGE N^o 21 EAST MOUNT DIABLO MERIDIAN



Aggregate Area of Public Land surveyed by J. H. Baxside
 contract Sept 7th 1852 3676.24
 " " " " by S. G. Ward
 contract June 20th 1852 7207.95
 Estimated - Smoke Creek Desert (unsurveyed) 12321.52
 Aggregate 23205.71

Commenced Sept 21st 1852
 Completed " 23rd "

* Yellow lines marked blue are counted in with the black lines

Surveys Designated	By Whom Surveyed	Date of Contract	Amount of Survey	When Surveyed	% Cont.
J. C. & J. Ward	J. H. Baxside	Sept 7 th 1852	311-49-50	1852	52
Jr W (Made) return	S. G. Ward	June 20 th 1852	4-08-58	1852	143
Sections lines yellow	J. H. Baxside	Sept 7 th 1852	111-79-10	1852	52
" " blue	S. G. Ward	June 20 th 1852	9-03-53	Sept 1852	143
" " blue	"	"	6-04-58	"	"
" " blue	"	"	7-13-15	"	"

The above Map of Township N^o 32 North of Range N^o 21 East
 Mt Diablo Meridian
 is strictly conformable to the field
 notes of the survey thereof on file in this Office, which have been examined and approved.

Surveyor General's Office,
 Santa Nevada
 February 15th 1873
 December 9th 1852

J. S. Paris
 Sur. Gen.