

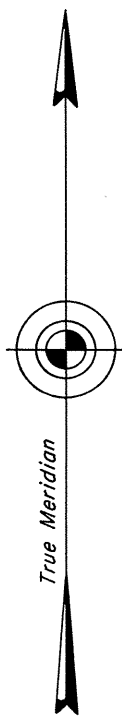
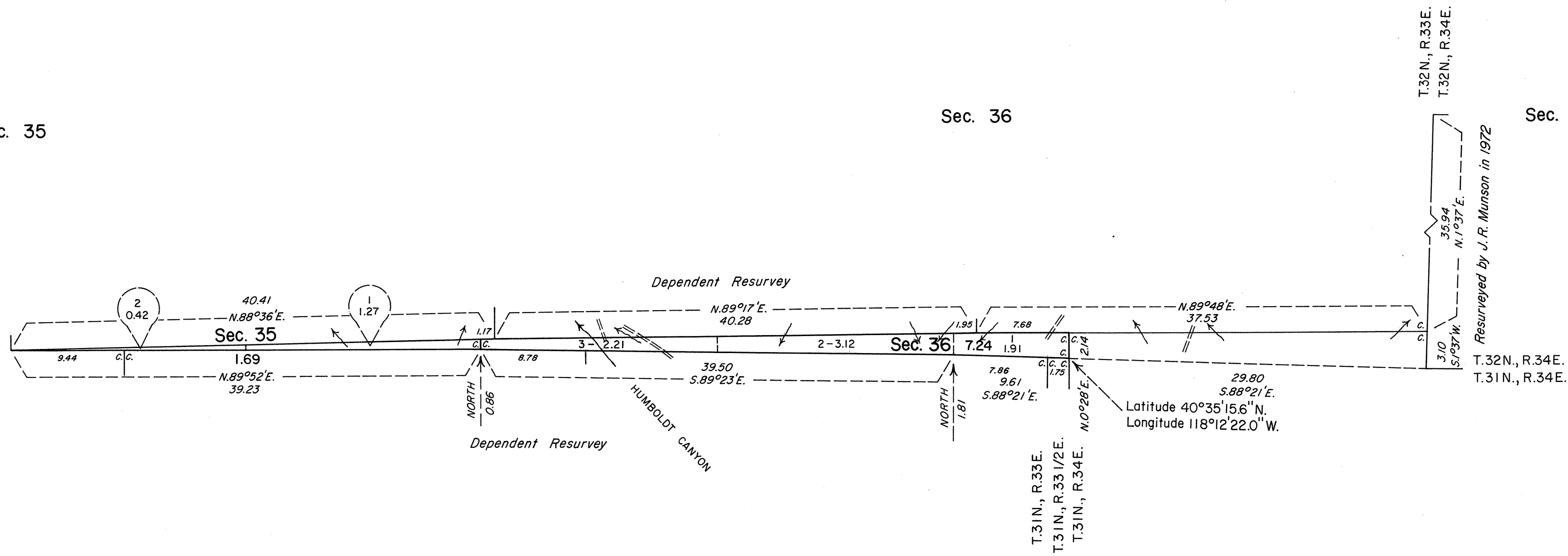
TOWNSHIP 31 1/2 NORTH, RANGE 33 EAST, OF THE MOUNT DIABLO MERIDIAN, NEVADA

OFFICIALLY FILED
NEVADA STATE OFFICE
10:00 AM, DECEMBER 16, 1985

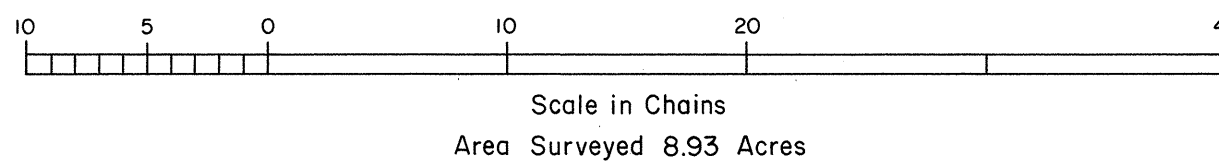
Sec. 35

Sec. 36

Sec. 31



Mean Magnetic Declination
18°E.



A history of surveys is contained in the field notes.

This plat represents a dependent resurvey of the north and south boundaries of T. 31 1/2 N., R. 33 E., designed to restore the corners in their true original locations according to the best available evidence, and the survey of sections 35 and 36, T. 31 1/2 N., R. 33 E., Mount Diablo Meridian, Nevada.

Survey executed by Ronald E. Williams, Cadastral Surveyor, beginning May 13, 1983 and completed June 22, 1984, pursuant to Special Instructions dated April 15, 1983 and Supplemental Special Instructions dated December 8, 1983, for Group No. 606, Nevada.

UNITED STATES DEPARTMENT OF THE INTERIOR
BUREAU OF LAND MANAGEMENT

Reno, Nevada

July 26, 1985

This plat is strictly conformable to the approved field notes, and the survey, having been correctly executed in accordance with the requirements of law and the regulations of this Bureau, is hereby accepted.

For the Director
Lael E. Bland
Chief Cadastral Surveyor