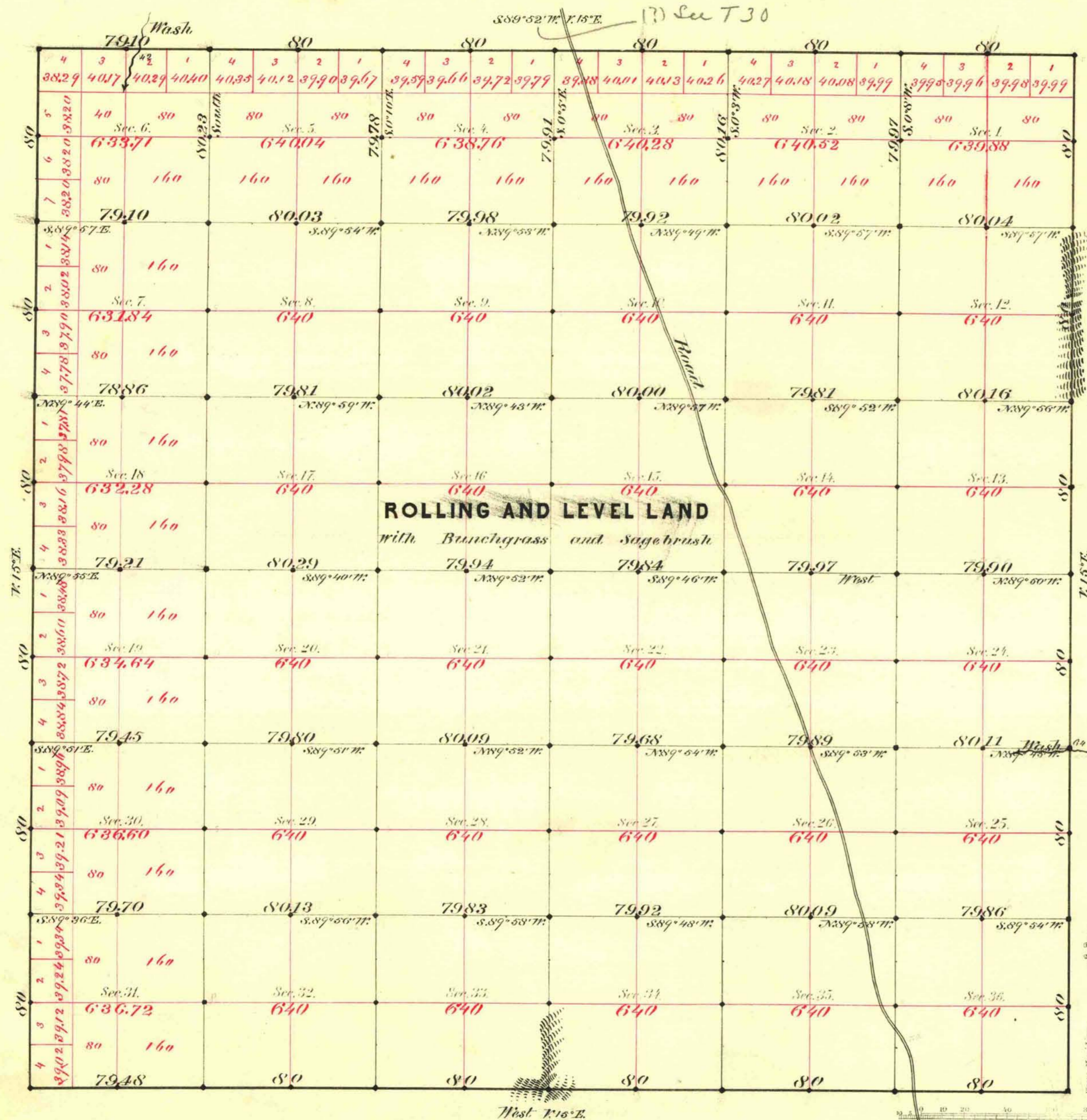


TOWNSHIP N^o 31 SOUTH RANGE N^o 64 EAST MOUNT DIABLO MERIDIAN



Aggregate Area of Public Land Surveyed 23005.27 Acres

Commenced May 2nd 1883
Completed " 8th "

Subdivisions run with a Var of 15° East

| Survey Designated | By Whom Surveyed | Date of Control | Amount of Survey | When Surveyed |
|-------------------|------------------|----------------------------|------------------|---------------|
| Township lines | T. A. Magee | July 24 th 1882 | 23-75-58 | 1883 |
| Subdivisions | " | " | 59-75-50 | May 1883 |

The above Map of Township N^o 31 South of Range N^o 64 East of Mount Diablo Meridian is strictly conformable to the field notes of the survey thereof on file in this Office, which have been examined and approved.

Surveyor General's Office,
Reno Nevada,
August 24th 1883

L. L. Canning
Supt. Genl. Nevada