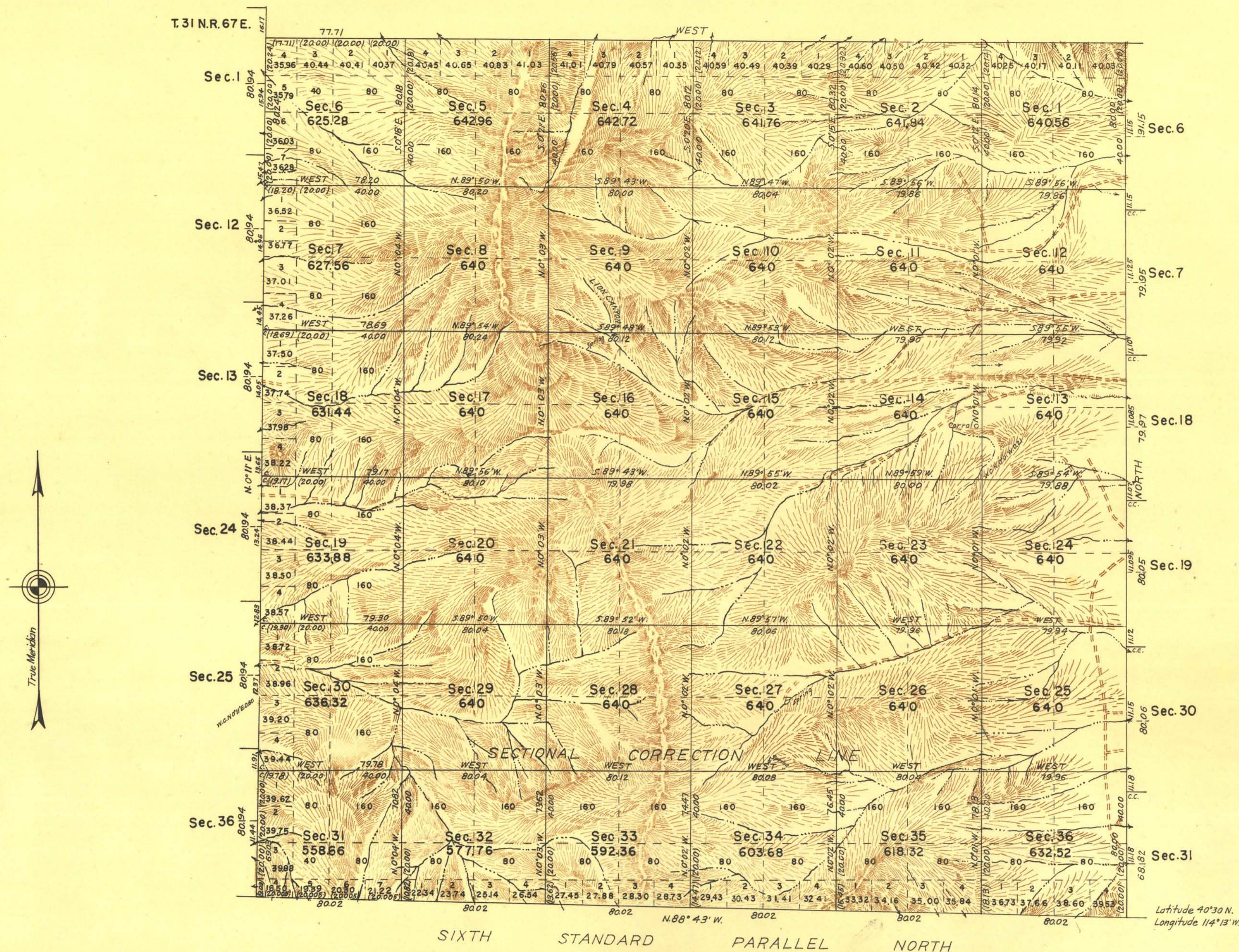


TOWNSHIP N° 31 NORTH, RANGE N° 68 EAST, OF THE MOUNT DIABLO MERIDIAN, NEVADA



Scale 1 Inch Equals 40 Chains Area Surveyed 22,747.62 Acres

UNITED STATES DEPARTMENT OF THE INTERIOR  
GENERAL LAND OFFICE

LINES DESIGNATED	BY WHOM SURVEYED	GROUP N°	DATE OF SPECIAL INSTRUCTIONS	WHEN SURVEYED	
				BEGUN	COMPLETED
Exterior S. & W. Subdivisional	Philip L. Inch, James W. Hardison, Wilson M. Conkie.	194	April 13, 1936	June 2, 1938	July 1, 1939
		"	" " "	" " "	" " "

Denver, Colorado, Feb. 1, 1946  
This plat of Township N° 31 North, Range N° 68 East, of the Mount Diablo Meridian, Nevada, is strictly conformable to the field notes of the survey thereof which have been examined and approved.

*C. Horton*  
Supervisor of Surveys

Washington D. C., July 8, 1946  
The survey represented by this plat having been correctly executed in accordance with the requirements of law and the regulations of this office, is hereby accepted.

*W. H. Starnell*  
Acting Assistant Commissioner.