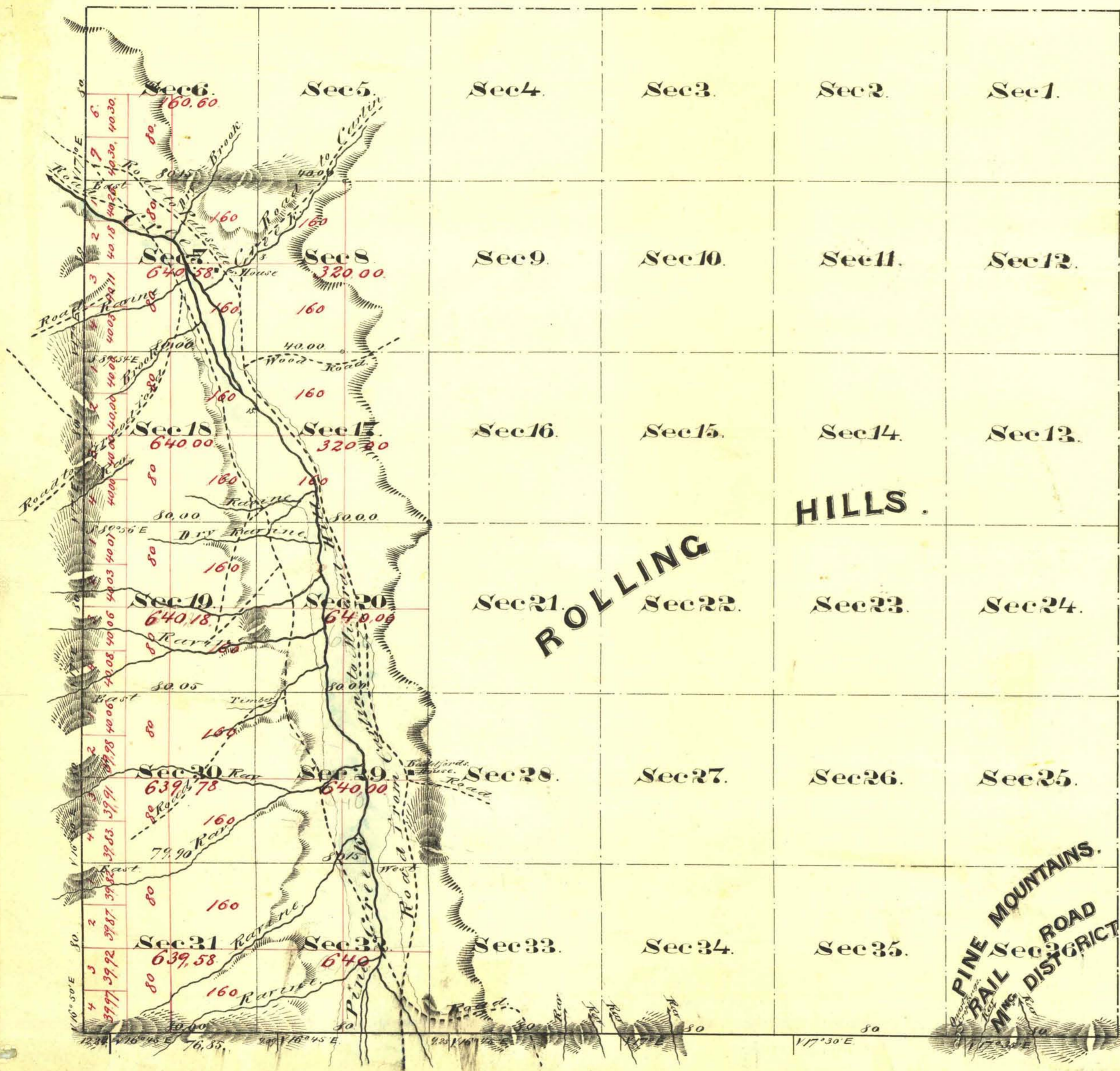


Township N<sup>o</sup> 31 North.

Range N<sup>o</sup> 52 East.

Mount Diablo Meridian.



Aggregate Area of Public Land (surveyed) 5,920.72 Acres  
 Estimated Rolling Hills (unsurveyed) 17,120.60  
 Aggregate 23,041.32 Acres

Commenced December 15<sup>th</sup> 1869.  
 Completed 15<sup>th</sup>

Subdivision lines not otherwise noted, run with a bearing of 17° East.

Surveys Designated.	By whom surveyed.	Date of Contract.	Amount of Survey acres - lbs - lks	When surveyed
Township lines.	C. A. Palmer	November 27 <sup>th</sup> 1869	12-00-00	1869
Subdivision lines			17-00-25	December 1869

339 Cont.  
33

The above Map of Township N<sup>o</sup> 31 North, Range N<sup>o</sup> 52 East, Mount  
 Diablo Meridian is strictly conformable to the field notes of the  
 survey thereof on file in this Office, which have been compared and  
 approved.  
 U. S. Surveyor General's Office.  
 Virginia City Nevada.  
 February 15<sup>th</sup> 1870.

2035

E. J. Paris  
 U. S. Surveyor General Nevada

T31N, R52E.