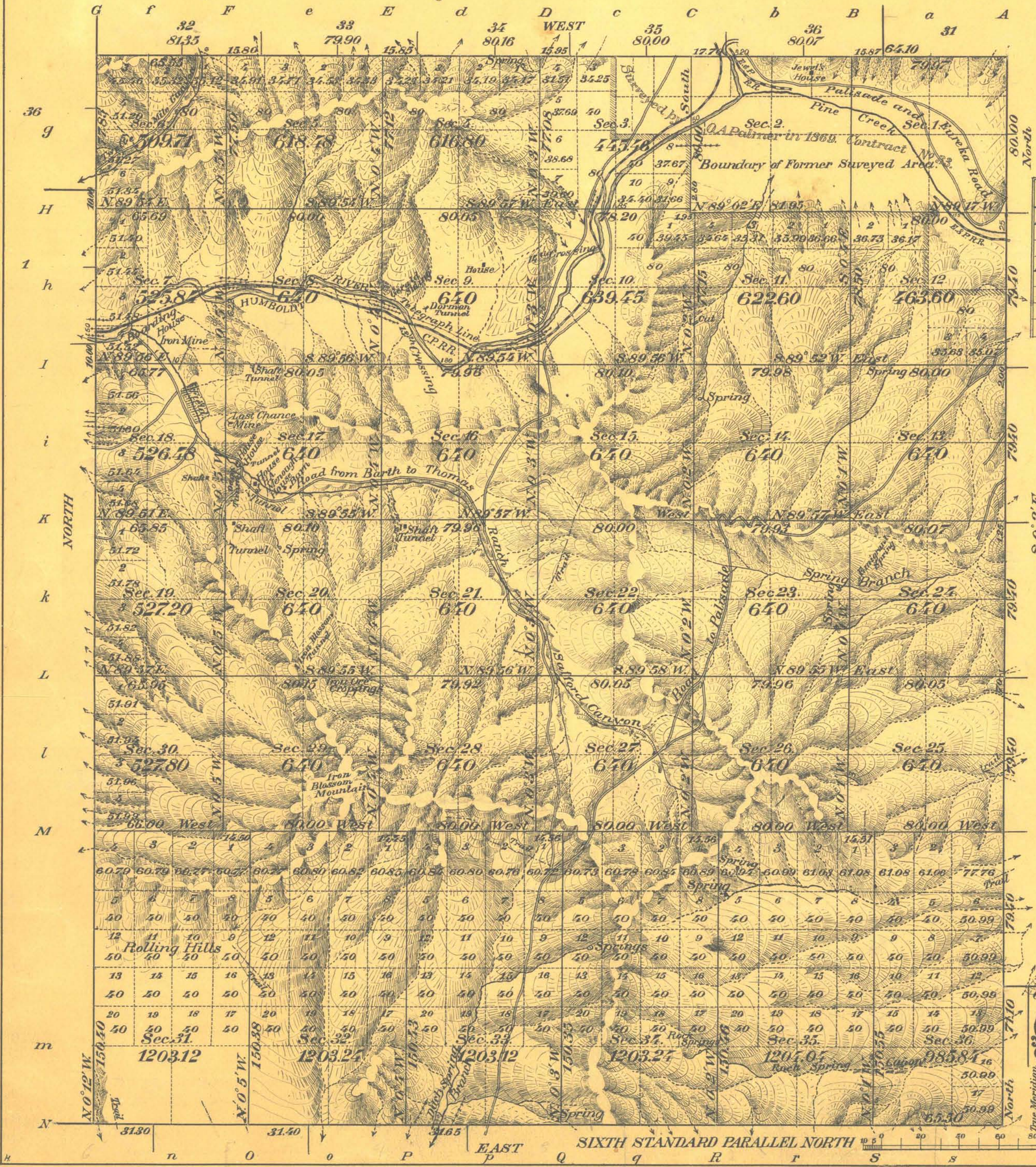


Township N<sup>o</sup> 31 North, Range N<sup>o</sup> 51 East, M<sup>t</sup> Diablo Meridian, Nevada.



Surveys Designated	By whom Surveyed	Date of Contract	Amount of Surveys M <sup>cs</sup> Chs Lks	When Surveyed	Contract N <sup>o</sup>
Stk. Std. Par. N. Sur.	John W. Fitzpatrick	Dec. 26, 1903	2 65 50	June 25 <sup>th</sup> 30 <sup>th</sup> 04	239
" " " "	Resur	" "	3 0 0	" 30 <sup>th</sup> July 1 <sup>st</sup> 04	"
N. E. & W. Tp. Lines	"	"	18 50 83	" 2 <sup>nd</sup> 9 <sup>th</sup> 11 <sup>th</sup> 13 <sup>th</sup> 04	"
Subdivisions	"	"	59 27 31	" 14 <sup>th</sup> 28 <sup>th</sup> "	"
" Resur	"	"	3 1 95	July 16 1904	"
Connections	"	"	1 44 93	" "	"
Old Work	O. A. Palmer	Nov. 24, 1869		Dec. 1869	33

The above Map of Township N<sup>o</sup> 31 N., of Range N<sup>o</sup> 51 E., M<sup>t</sup> Diablo Meridian, Nevada, is strictly conformable to the field notes of the survey thereof on file in this Office, which have been examined and approved.

Surveyor General's Office } *Matthew Kyle*  
 U Reno, Nevada, March 15<sup>th</sup> 1905 } Sur<sup>r</sup> Gen<sup>l</sup>

31 32  
 67.50 WEST  
 SIXTH STANDARD PARALLEL NORTH  
 Total number of Acres 23,906.02  
 Latitude 40° 29' N.  
 Longitude 116° 14' 10" W  
 Mean mag. dec. 17° 35' E.

T31N, R51E