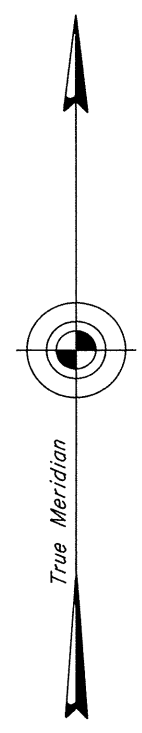
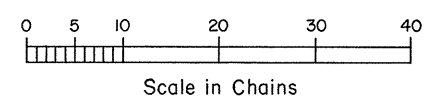
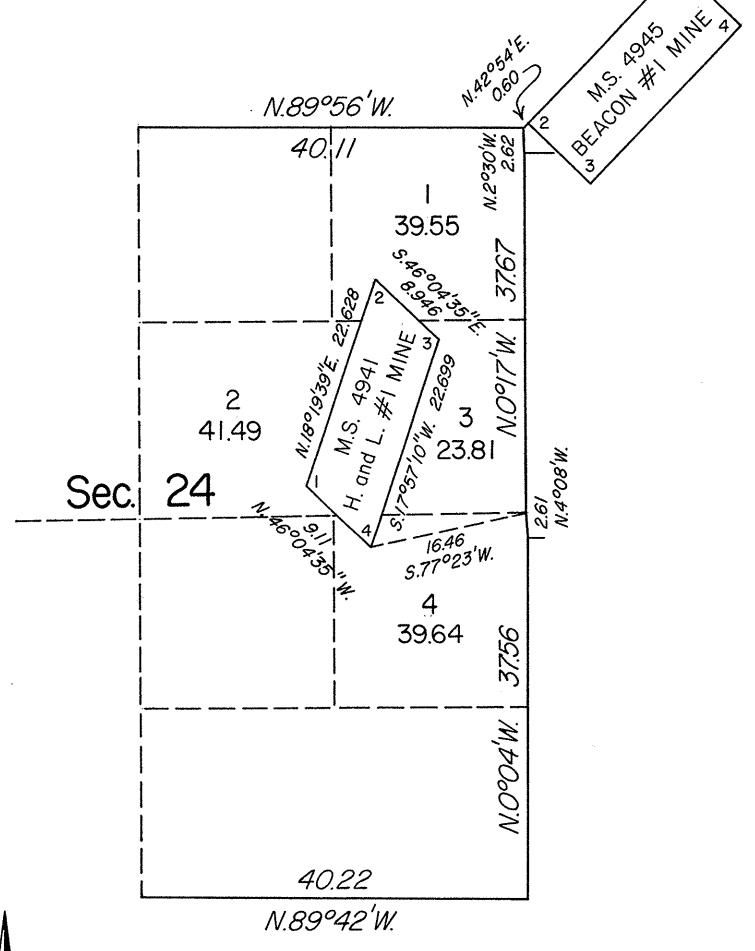


TOWNSHIP 31 NORTH, RANGE 46 EAST, OF THE MOUNT DIABLO MERIDIAN, NEVADA

DEPENDENT RESURVEY

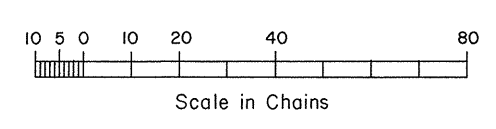
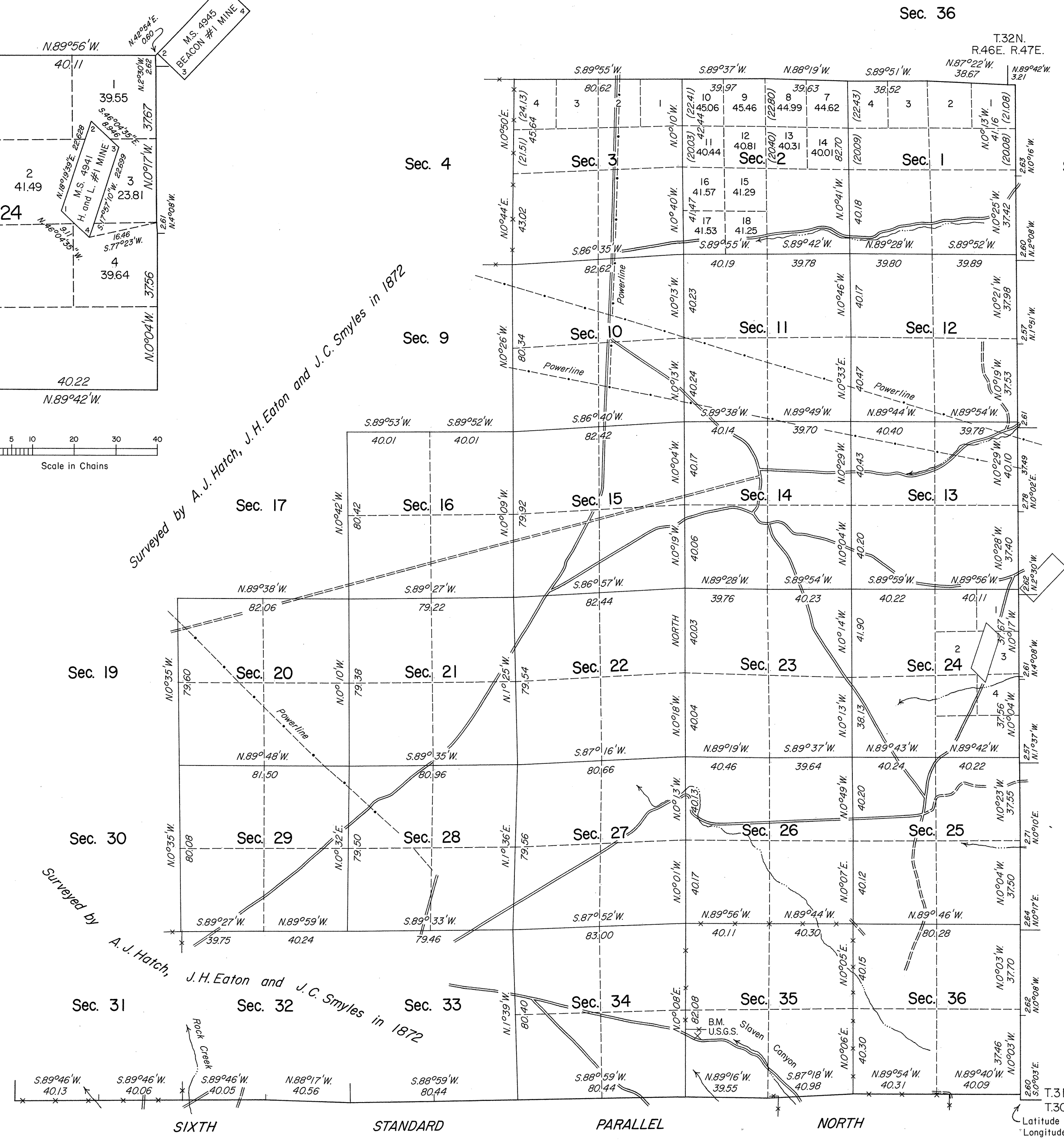
ENLARGED DIAGRAM



Mean Magnetic Declination
17 1/2° E.

Surveyed by A. J. Hatch, J. H. Eaton and J. C. Smyles in 1872

Surveyed by A. J. Hatch, J. H. Eaton and J. C. Smyles in 1872



History of the earlier surveys is contained in the field notes.

This plat represents a dependent resurvey of the Sixth Standard Parallel North, through R. 46 E., and the east boundary, a portion of the north boundary and a portion of the subdivisional lines of T. 31 N., R. 46 E., designed to restore the corners in their true original locations according to the best available evidence.

Lottings and areas, except as shown hereon, are as shown on the plats approved December 21, 1872, October 21, 1903 and January 3, 1906.

Survey executed by Joseph A. Bastian, Stephen R. Lambeth and David D. Morlan, Cadastral Surveyors, beginning July 30, 1981 and completed August 25, 1981, pursuant to Special Instructions dated October 9, 1980 for Group 589, Nevada.

UNITED STATES DEPARTMENT OF THE INTERIOR
BUREAU OF LAND MANAGEMENT

Reno, Nevada September 14, 1983

This plat is strictly conformable to the approved field notes, and the survey, having been correctly executed in accordance with the requirements of law and the regulations of this Bureau, is hereby accepted.

For the Director

Deputy State Director, Operations

T.31N.
T.30N. R.47E.
Latitude 40°30'30.6"N.
Longitude 116°43'39.9"W.