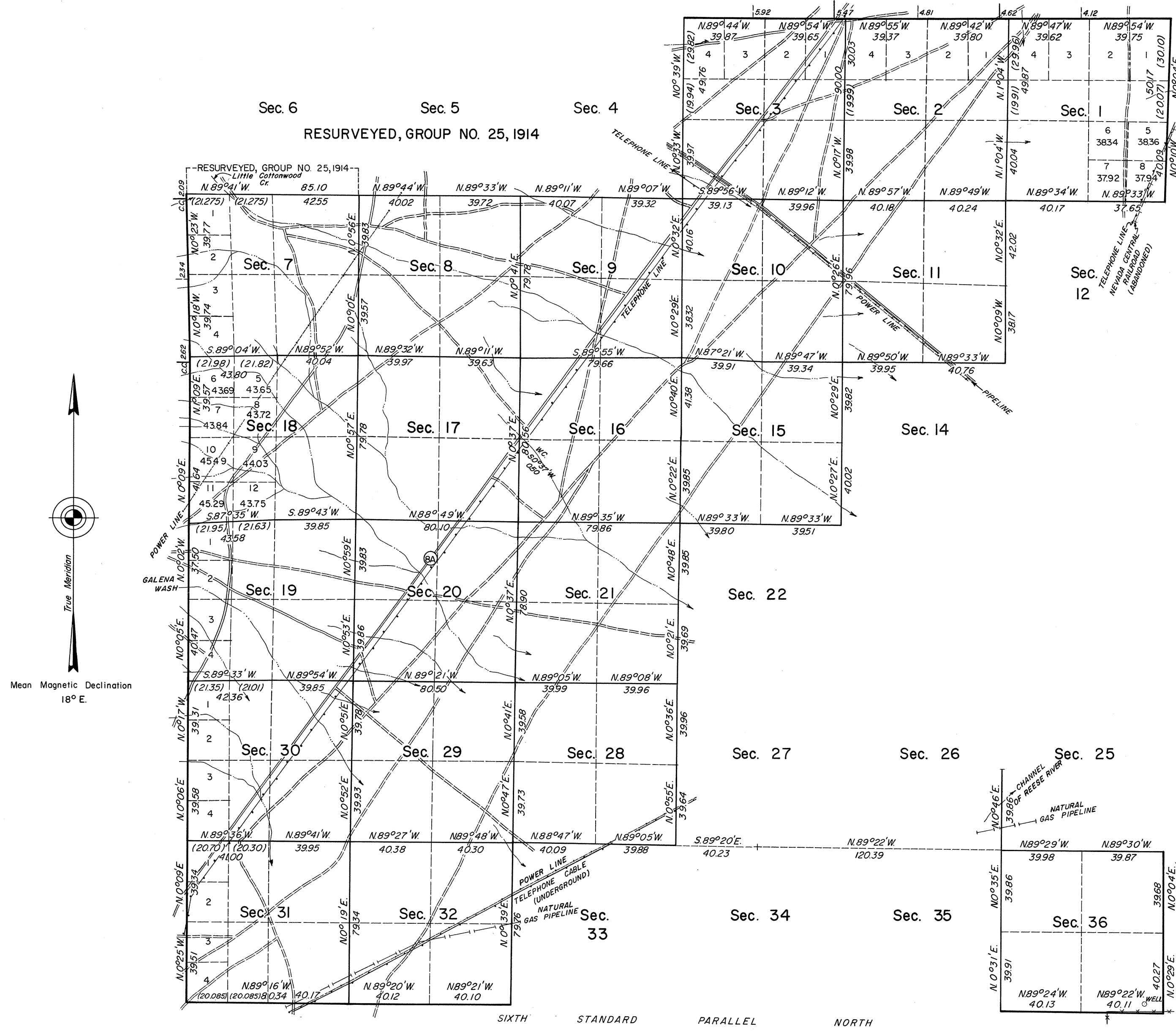


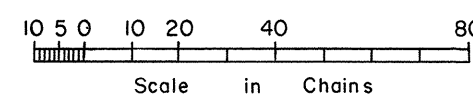
TOWNSHIP 31 NORTH, RANGE 44 EAST, OF THE MOUNT DIABLO MERIDIAN, NEVADA

DEPENDENT RESURVEY

RESURVEYED, GROUP NO. 25, 1914



Mean Magnetic Declination
18° E.



Area Resurveyed 13,714.26 Acres

History of the earlier surveys is contained in the field notes.

This plat represents a dependent resurvey of a portion of the Sixth Standard Parallel North, through Range 44 East; portions of the east, west, and north boundaries, and a portion of the subdivisonal lines, designed to restore the corners in their true original locations according to the best available evidence.

Lottings and areas, except as shown hereon, are as shown on the plat approved September 21, 1893.

Survey executed by Dennis D. Bland and James R. Munson, Cadastral Surveyors, May 8, 1967, to May 6, 1971, under Special Instructions dated June 30, 1966, and Supplemental Special Instructions dated April 7, 1971, for Group No. 439, Nevada.

UNITED STATES DEPARTMENT OF THE INTERIOR
BUREAU OF LAND MANAGEMENT
Washington, D. C. July 15, 1971

This plat is strictly conformable to the approved field notes, and the survey, having been correctly executed in accordance with the requirements of law and the regulations of this Bureau, is hereby accepted.

For the Director

Chief, Division of Cadastral Survey

Latitude 40° 30' 28.6" N
Longitude 116° 57' 24.2" W

OFFICIALLY FILED
NEVADA LAND OFFICE
10:00 AM 8/12/1971

