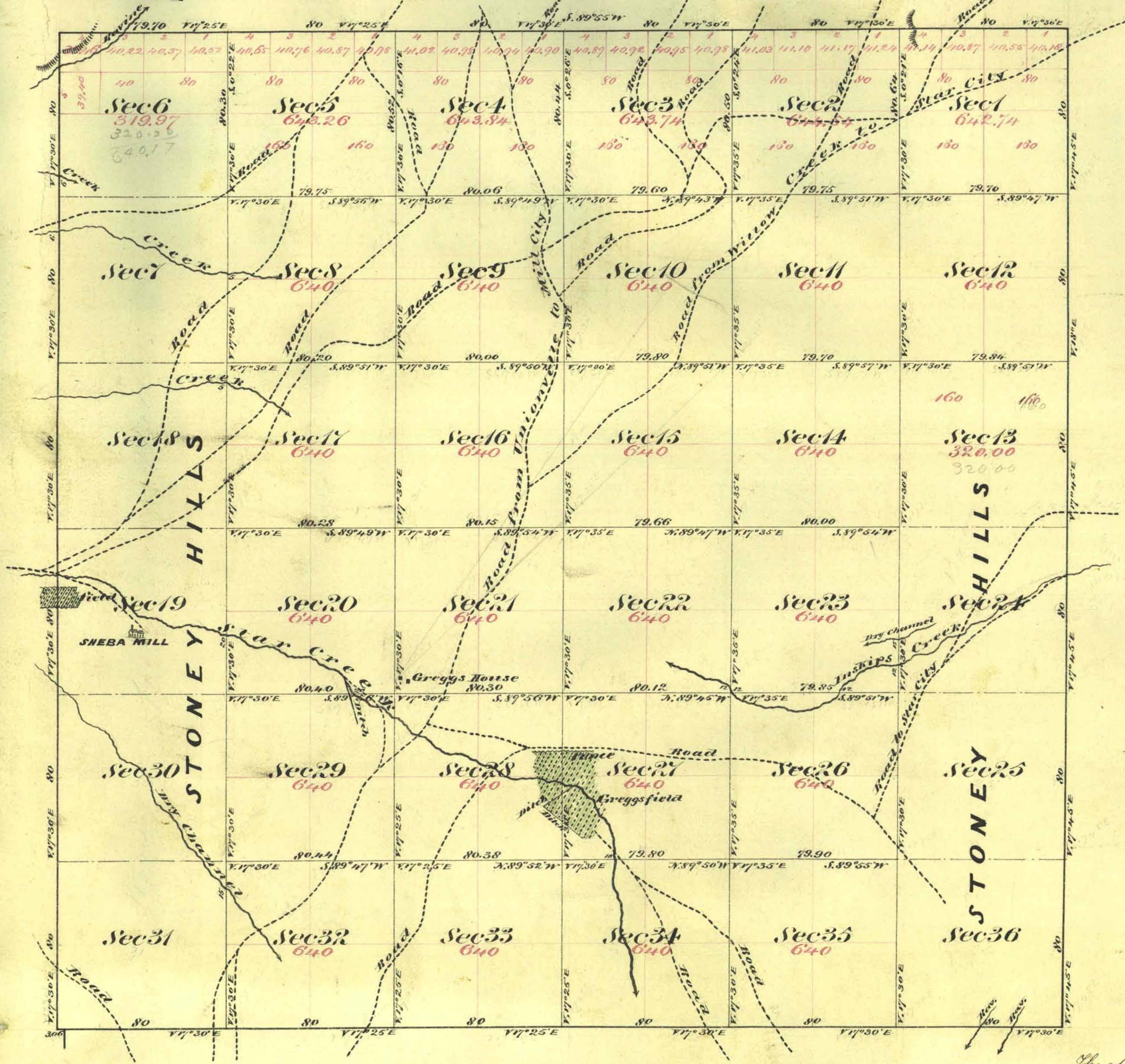


Township N^o 31 North

Range N^o 35 East

Mount Diablo Meridian



Aggregate Area of Public Land (Surveyed) 17,298.09 Acres
 Estimated " " Stony Hills (unsurveyed) 5,753.10 "
 Aggregate 23,051.19 "

Commenced August 14th 1859
 Completed " 21st "

Survey Designated	By Whom Surveyed	Date of Contact	Amount of Survey In to chs. & cts.	When Surveyed
East Boundary of Township	William Epler	June 12 th 1859	6. 00. 00.	1857
Rest of Township lines	A. Hatch & H. Eaton	July 14 th 1859	17. 79. 70.	1859
Subdivision lines	" " " "	" " "	52. 02. 08.	August 1859

N^o 1
 27
 "

The above Map of Township N^o 31 North, Range N^o 35 East Mount Diablo Meridian is strictly conformable to the field notes of the surveys thereof on file in this office, which have been examined and approved.
 U.S. Surveyor General's Office
 Virginia City Nevada
 October 6th 1859

E. S. Davis