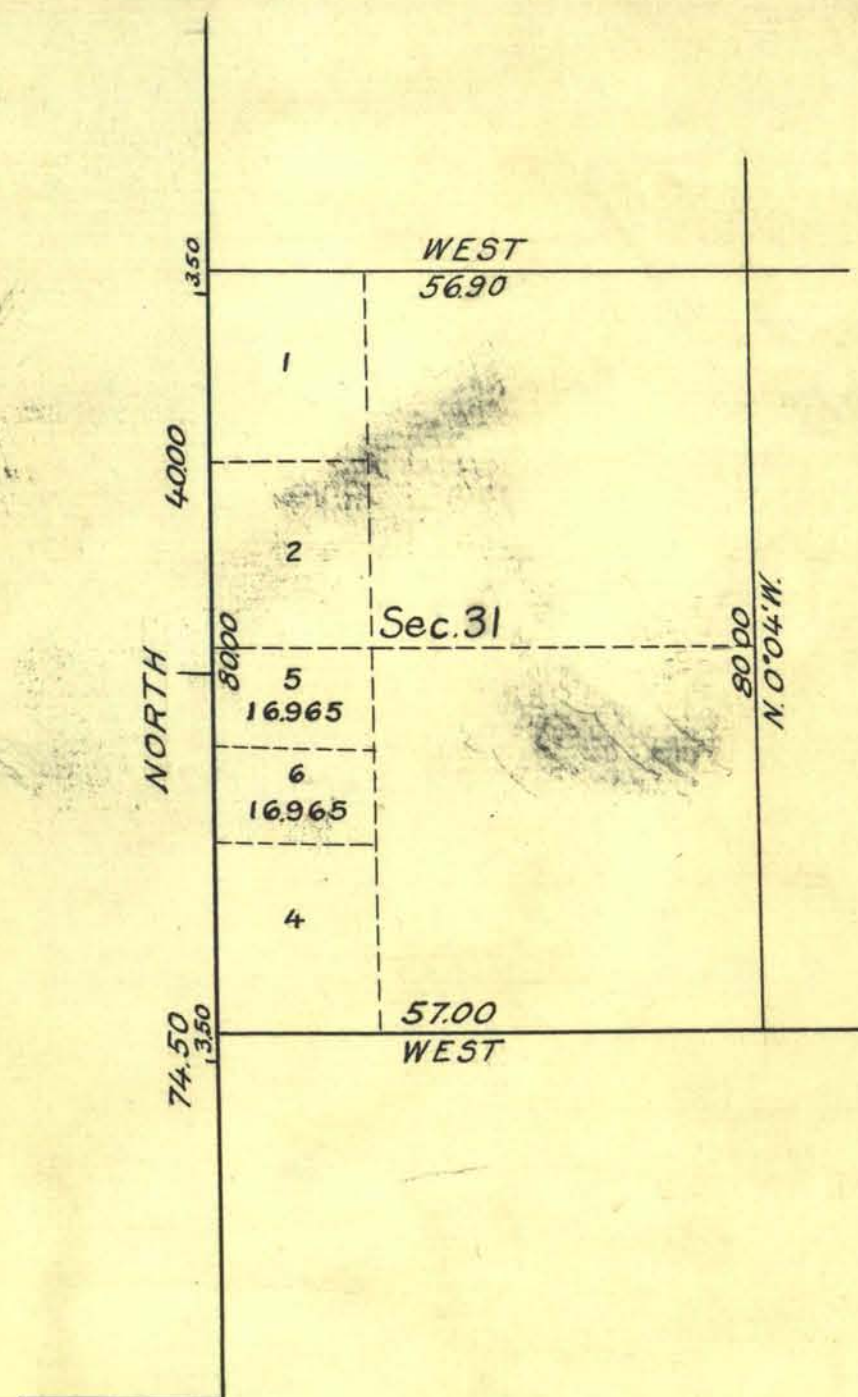


TOWNSHIP N°31 NORTH RANGE N°34 EAST  
OF THE MOUNT DIABLO MERIDIAN NEVADA  
SUPPLEMENTAL PLAT OF SEC.31

SCALE 20 CHS. TO 1 INCH



Public Survey Office,  
Reno, Nevada, March 22, 1929  
The above supplemental plat of Sec. 31, Township No. 31 North,  
Range No. 34 East, of the Mount Diablo Meridian Nevada, based upon the  
plat approved November 29, 1902, showing a subdivision of original lot 3 to  
accommodate the amended Central Pacific Railway Company's primary  
list Carson City 014947, prepared in accordance with instructions contained  
in the Commissioner's letter "E" dated March 9, 1929, is hereby approved.

*Ralph W. Nelson*  
Office Cadastral Engineer

DEPARTMENT OF THE INTERIOR  
GENERAL LAND OFFICE

Washington, D.C., April 8, 1929  
The amended lottings represented by this  
supplemental plat having been correctly made in  
accordance with the regulations of this office, the  
plat is hereby accepted.

*W. H. Stovell*  
Assistant Commissioner

JRF.