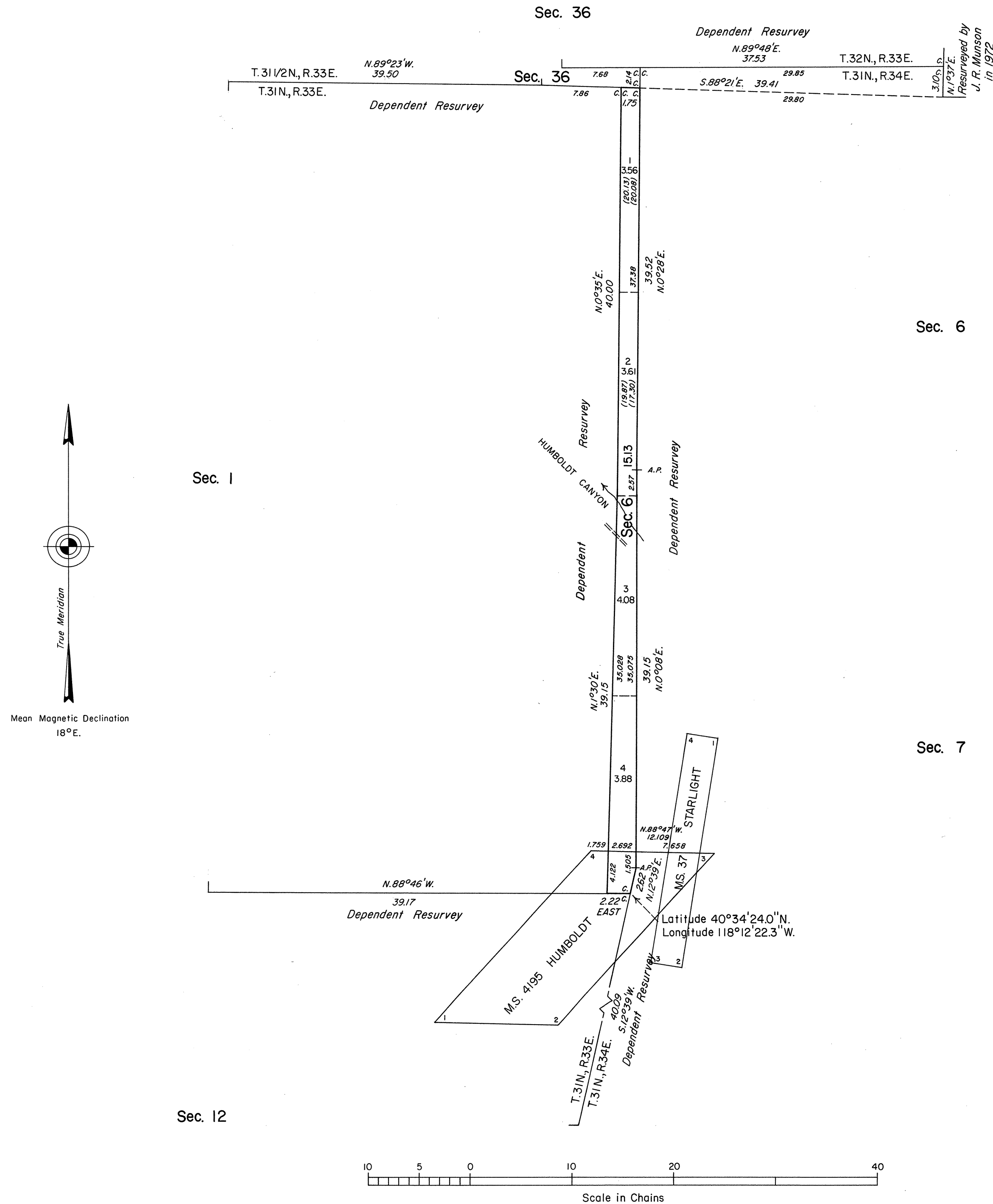


TOWNSHIP 31 NORTH, RANGE 33 1/2 EAST, OF THE MOUNT DIABLO MERIDIAN, NEVADA

OFFICIALLY FILED  
NEVADA STATE OFFICE  
10:00 A.M. DECEMBER 16, 1985



A history of surveys is contained in the field notes.

A dependent resurvey of the south boundary of T. 31 1/2 N., R. 33 E., the east boundary of T. 31 N., R. 33 E. and a portion of Mineral Survey No. 4195, was executed concurrently under this same Group.

This plat represents a dependent resurvey of the east boundary of T. 31 N., R. 33 1/2 E., designed to restore the corners in their true original locations according to the best available evidence and the survey of the south boundary of T. 31 N., R. 33 1/2 E.

Survey executed by Ronald E. Williams, Cadastral Surveyor, beginning May 6, 1983 and completed June 22, 1984, pursuant to Special Instructions dated April 15, 1983 and Supplemental Special Instructions dated December 8, 1983, for Group No. 606, Nevada.

Areas

Total Area of Segregation	1.05 Acres
Total Area Exclusive of Segregation	15.13 Acres
Total Area Surveyed	16.18 Acres

UNITED STATES DEPARTMENT OF THE INTERIOR  
BUREAU OF LAND MANAGEMENT

Reno, Nevada July 26, 1985

This plat is strictly conformable to the approved field notes, and the survey, having been correctly executed in accordance with the requirements of law and the regulations of this Bureau, is hereby accepted.

For the Director  
*Lancel E. Bland*  
Chief Cadastral Surveyor