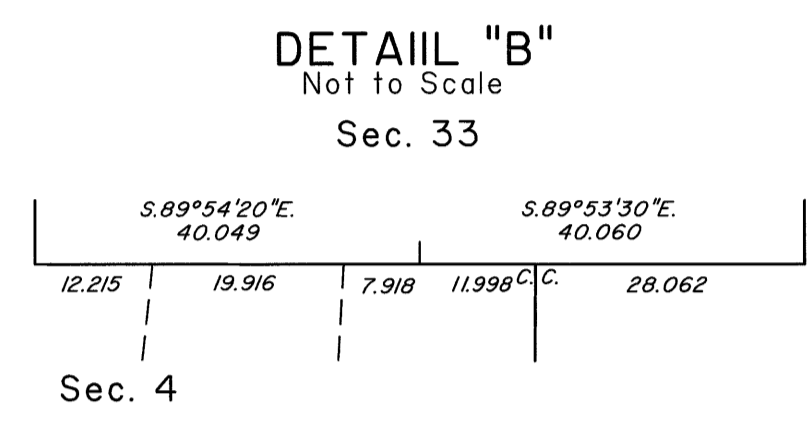
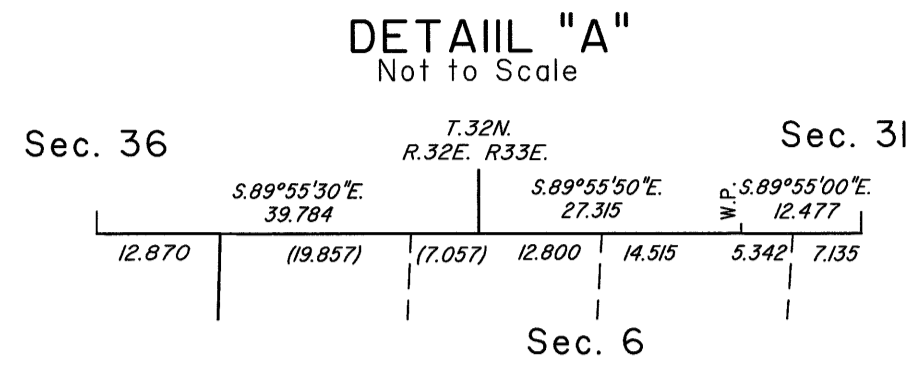
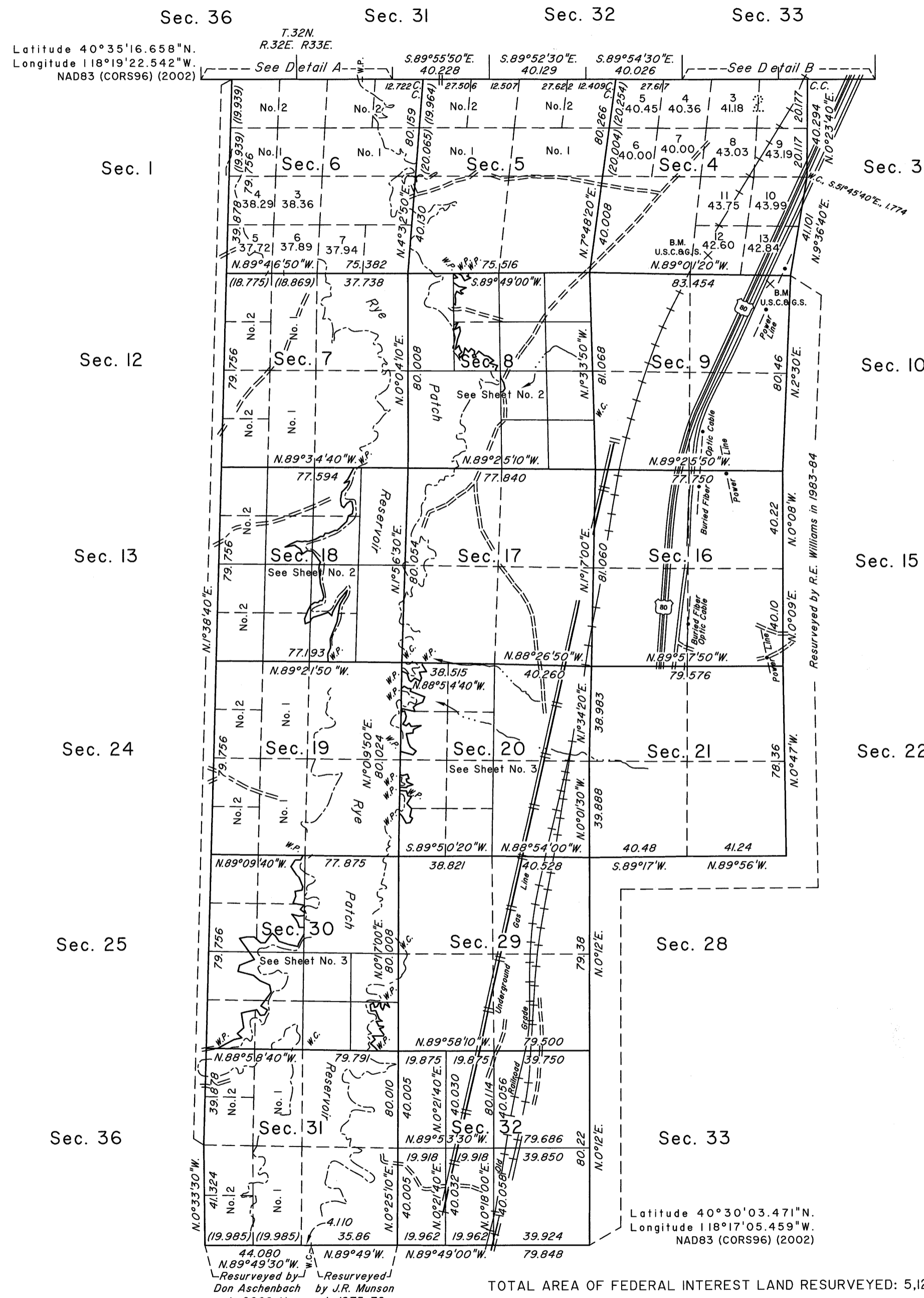


# TOWNSHIP 31 NORTH, RANGE 33 EAST, OF THE MOUNT DIABLO MERIDIAN, NEVADA

## DEPENDENT RESURVEY AND SUBDIVISION



A history of the surveys is contained in the field notes.

This plat, in three sheets, represents the dependent resurvey of a portion of the south boundary of Township 32 North, Range 32 East and a portion of the south boundary of Township 32 North, Range 33 East, and the dependent resurvey of a portion of the south boundary, the west boundary, and a portion of the subdivisional lines designed to restore the corners in their true original locations according to the best available evidence, the subdivision of sections 8, 18, 20, 30 and 32, and the survey of the meanders of portions of the 4144 foot contour line, Township 31 North, Range 33 East, Mount Diablo Meridian, Nevada.

Except as indicated hereon, the lottings and areas are as shown on the plat approved April 9, 1864.

Survey executed by Don R. Aschenbach, Cadastral Surveyor, and Mark G. Petrosine, Surveying Technician, beginning July 9, 2010, and completed February 11, 2011, pursuant to Special Instructions for Group No. 896, Nevada, dated June 1, 2010.

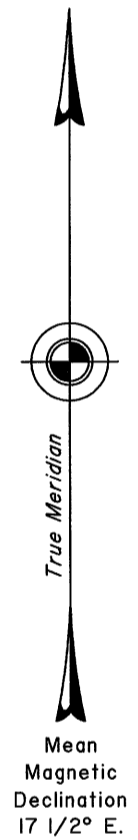
UNITED STATES DEPARTMENT OF THE INTERIOR  
BUREAU OF LAND MANAGEMENT

Reno, Nevada      May 3, 2012

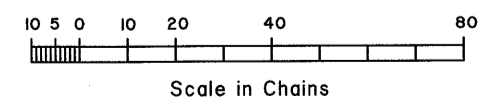
This plat is strictly conformable to the approved field notes, and the survey, having been correctly executed in accordance with the requirements of law and the regulations of this Bureau, is hereby accepted.

For the Director

Chief Cadastral Surveyor for Nevada



Mean Magnetic Declination 17 1/2° E.



OFFICIALLY FILED  
NEVADA STATE OFFICE  
at 10:00 AM on May 9, 2012