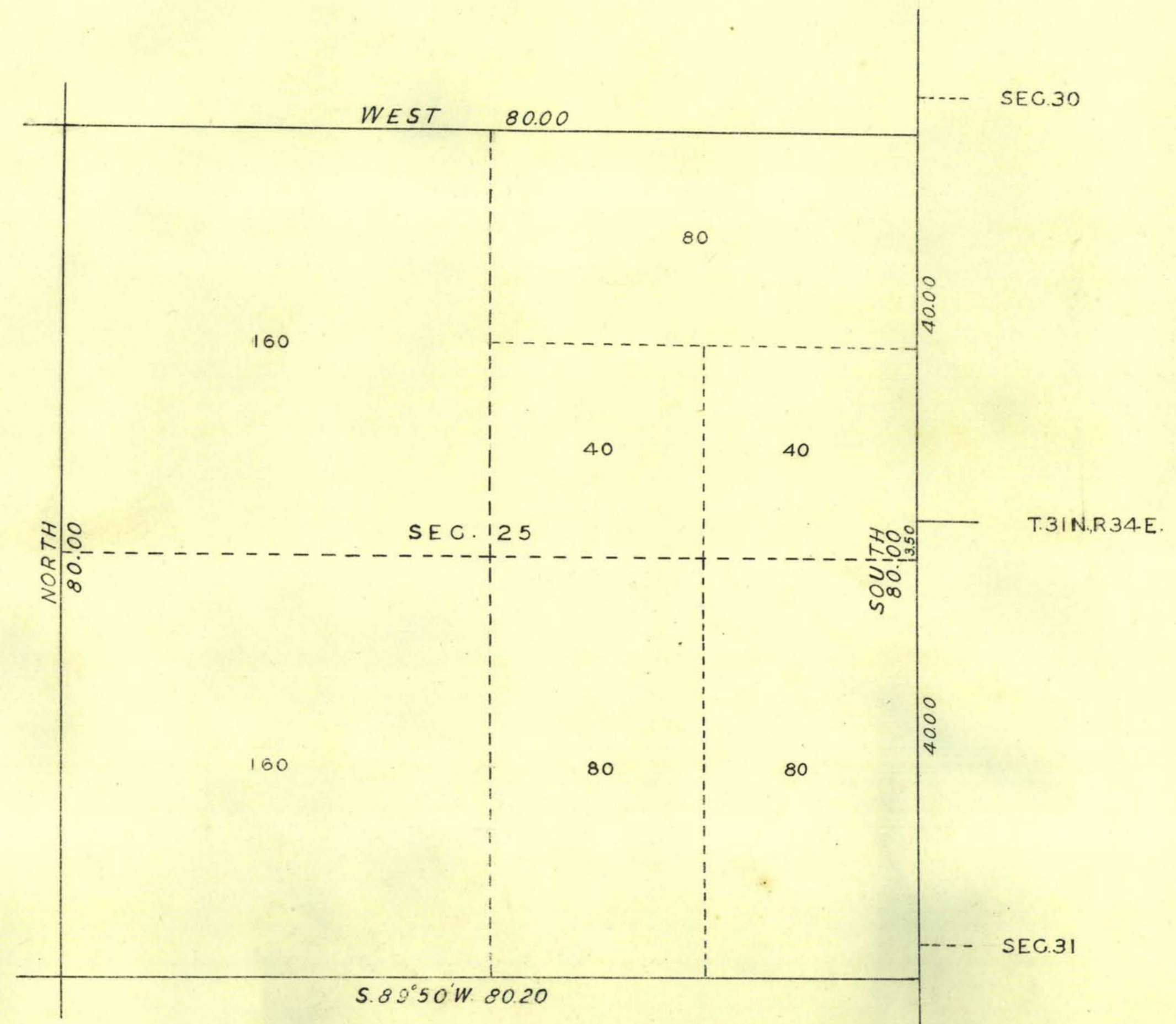


TOWNSHIP N°31 NORTH, RANGE N°33 EAST OF THE MOUNT DIABLO MERIDIAN, NEVADA.
SUPPLEMENTAL PLAT OF SEC. 25

SCALE 10 CHS. TO 1 INCH.



Public Survey Office.
Reno, Nevada, March 31, 1932.

The above supplemental plat of Section 25, Township No. 31 North, Range No. 33 East of the Mount Diablo Meridian Nevada based upon the plat approved Nov. 29, 1902, has been prepared for the purpose of eliminating certain mining claims described as lots 43 A and B, Benton lode and Benton mill site, lot 44 Benton lode, lots 38 and 49 Belden lode, and lots 47 and 48 Crescent lode, and providing descriptions of regular subdivisions in order to provide for the disposal under the railroad grant of the NE 1/4, SW 1/4 NE 1/4, NW 1/4, SW 1/4 and W 1/2 SE 1/4 Section 25, to accommodate amended selection of the primary list 99 (Carson City 015381) of the Central Pacific Railway Company, in accordance with instructions contained in the Commissioner's letter "N (MAS) dated March 1, 1932, and is hereby approved.

Ralph W. Nelson
Office Cadastral Engineer.

DEPARTMENT OF THE INTERIOR
GENERAL LAND OFFICE
Washington, D.C., April 22, 1932

The amended lottings represented by this supplemental plat having been correctly made in accordance with the regulations of this office, the plat is hereby accepted.

Thos. C. Howell
Assistant Commissioner

A.R.S.
4.6M.