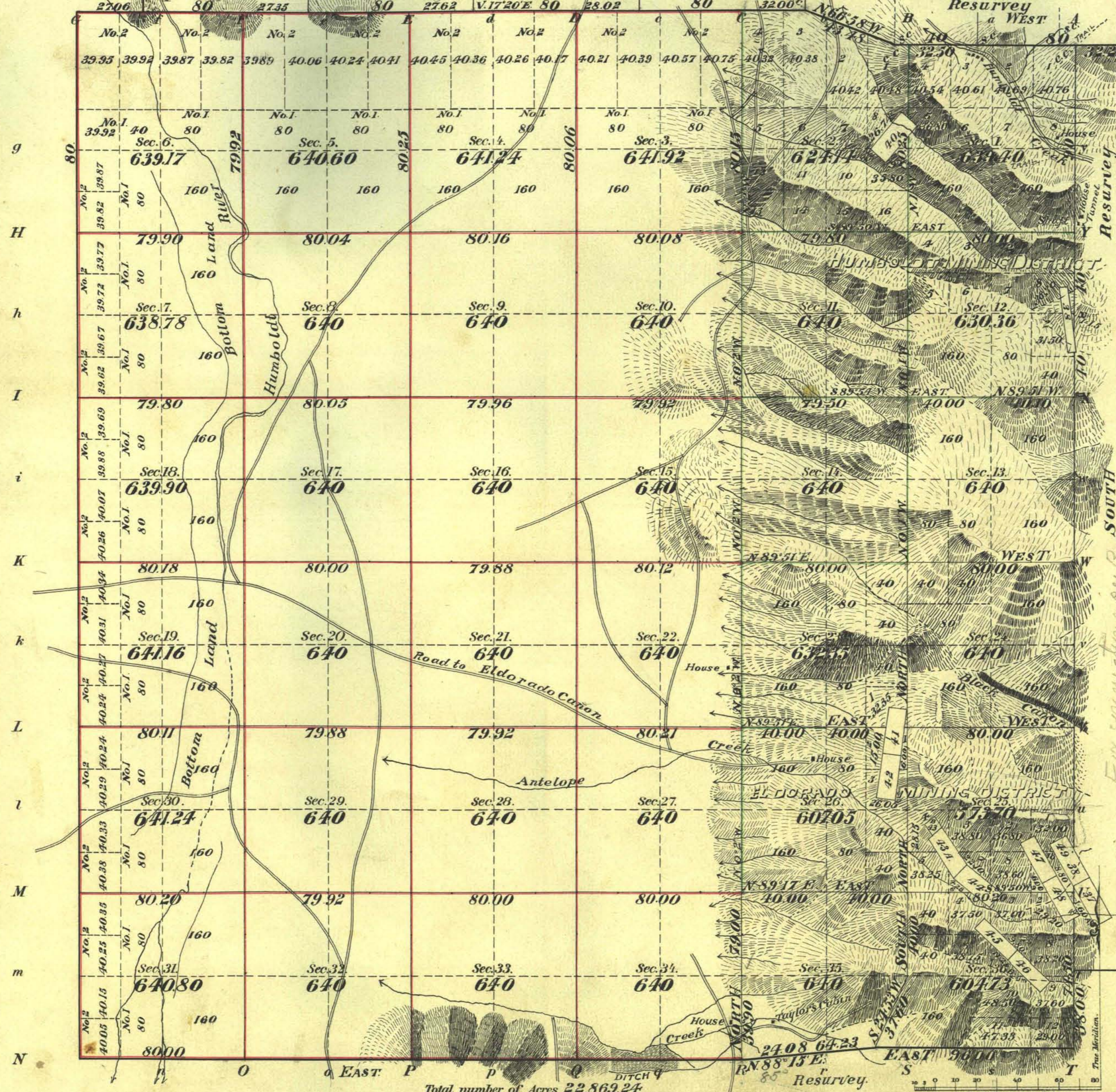


SEVENTH STANDARD PARALLEL NORTH. (DYER'S)
 Township No 31 North Range No 33 East Mt Diablo Meridian



Meanders of								
Posts	Courses	Ch ² Lk ²	Posts	Courses	Ch ² Lk ²	Posts	Courses	Ch ² Lk ²

HUMBOLDT MINING DISTRICT
 No. 35 CALAVERAS MADRE
 40

EL DORADO MINING DISTRICT
 No. 37-38-49 BELDEN
 40-47-48 CRESCENT
 41-42 CHICAGO
 44-43 A & B BENTON
 45-46 NORMAN

Latitude 40° 30' N.
 Longitude 118° 12' 16" W.
 Mean Mag. Dec. 18° 30' E.

Surveys Designated	By Whom Surveyed	Date of Contract	Amount of Surveys M. Ch ² Lk ²	When Surveyed	Contract No.
N. S. & E. Township lines	Black F. H. Criss	May 31 1900		1901	224
Subdivisions					
Subdivisions	Green H. B. Maxson	Jan. 19 1893		1893	199
Township Lines	Red E. H. Dyer	Oct. 1 st 1863		1863	E.
Subdivisions					

Corapiled
 The above Map of Township No 31 N. of Range No 33 E.
 Mt Diablo Meridian, Nevada is strictly conformable to the field
 notes of the survey thereof on file in this Office which have been examined and approved.
 Surveyor General's Office. *Matthew J. ...*
 Reno Nevada November 4th 1903. *Sur. Gen.*