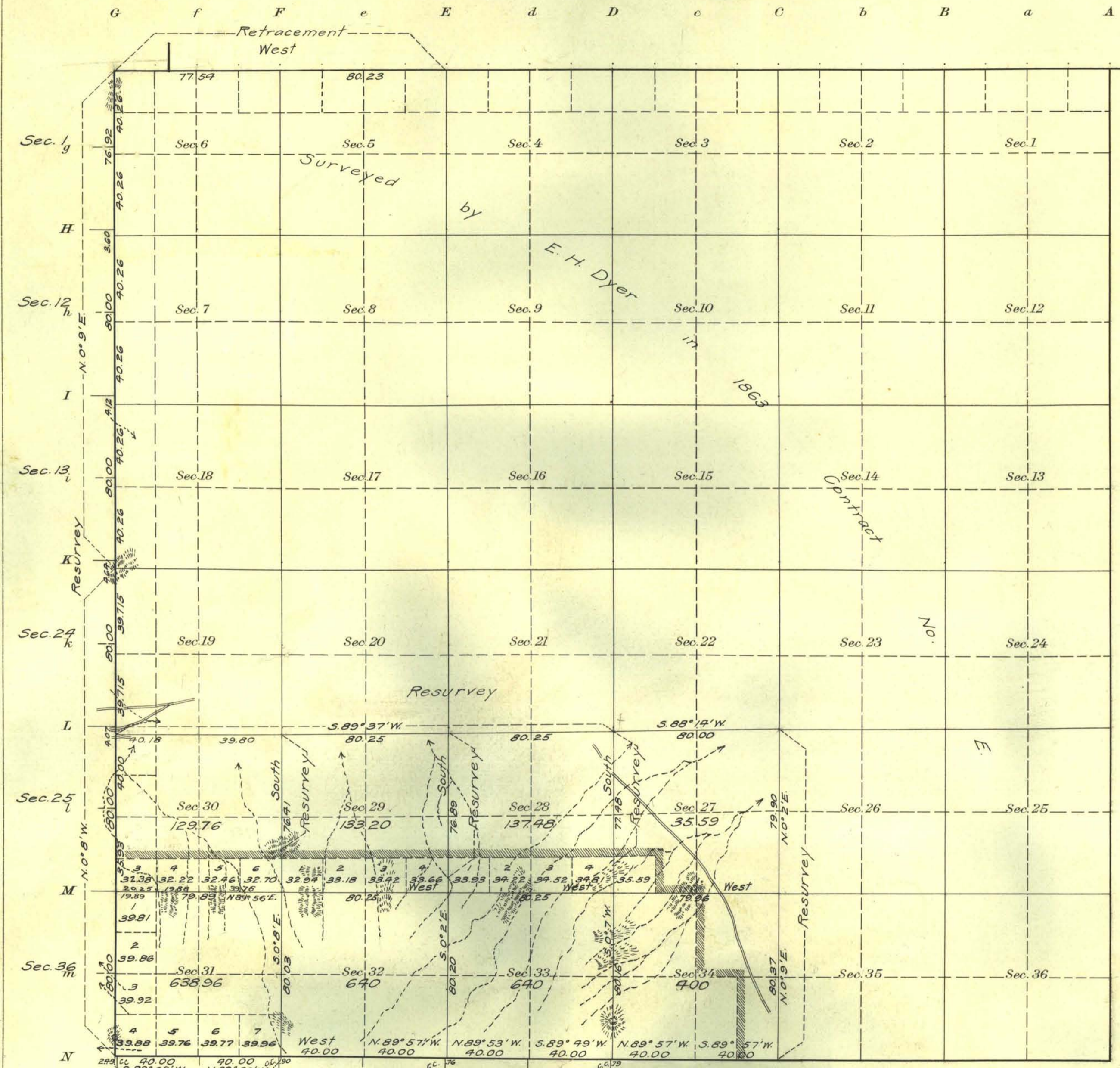


R.

# Township N° 31 North Range N° 32 East Mt Diablo Meridian,



-Note-  
Surveyor reports indication of mineral in western portion of township.

Areas in Acres	
Public Land	1307.24
Indian Reservation	
Indian Allotments	
Mineral Claims	
Water Surface	
G.P.R.R. Land Grant	1447.75
<b>Total Area</b>	<b>2754.99</b>

Scale 40 Chains to an inch  
Mean Magnetic Declination 18° 30' E.

Latitude 40° 30' N.  
Longitude 118° 26' W.

SIXTH STANDARD PARALLEL NORTH

Surveys Designated	By Whom Surveyed	Group		Amount of Surveys		When Surveyed	
		No.	Date	Mls.	chs.	begun	Completed
West Boundary (Resur.)	William H. Craige and Newton E. Potter	14	Aug. 22, 1911	5	76 92	Aug. 9, 1912	Aug. 9, 1912
Sixth St. Par. North (Refmt.)	" "	"	"	4	00 00	" 3, "	" 3, "
Subdivisions (Resur.)	" "	"	"	9	10 75	" 7, "	" 7, "
Subdivisions (New)	" "	"	"	6	61 52	" 5, "	" 7, "
N. Boundary (Ret.)	" "	"	"	1	77 77	" 7, "	" 8, "

The above map of Township No. 31 North Range No. 32 East of the Mt Diablo Meridian Nevada is strictly conformable to the field notes of the survey thereof on file in this office, which have been examined and approved  
U. S. Surveyor General's Office.  
Reno, Nevada April 11, 1914

*Marshall Kyle*  
Surveyor General.