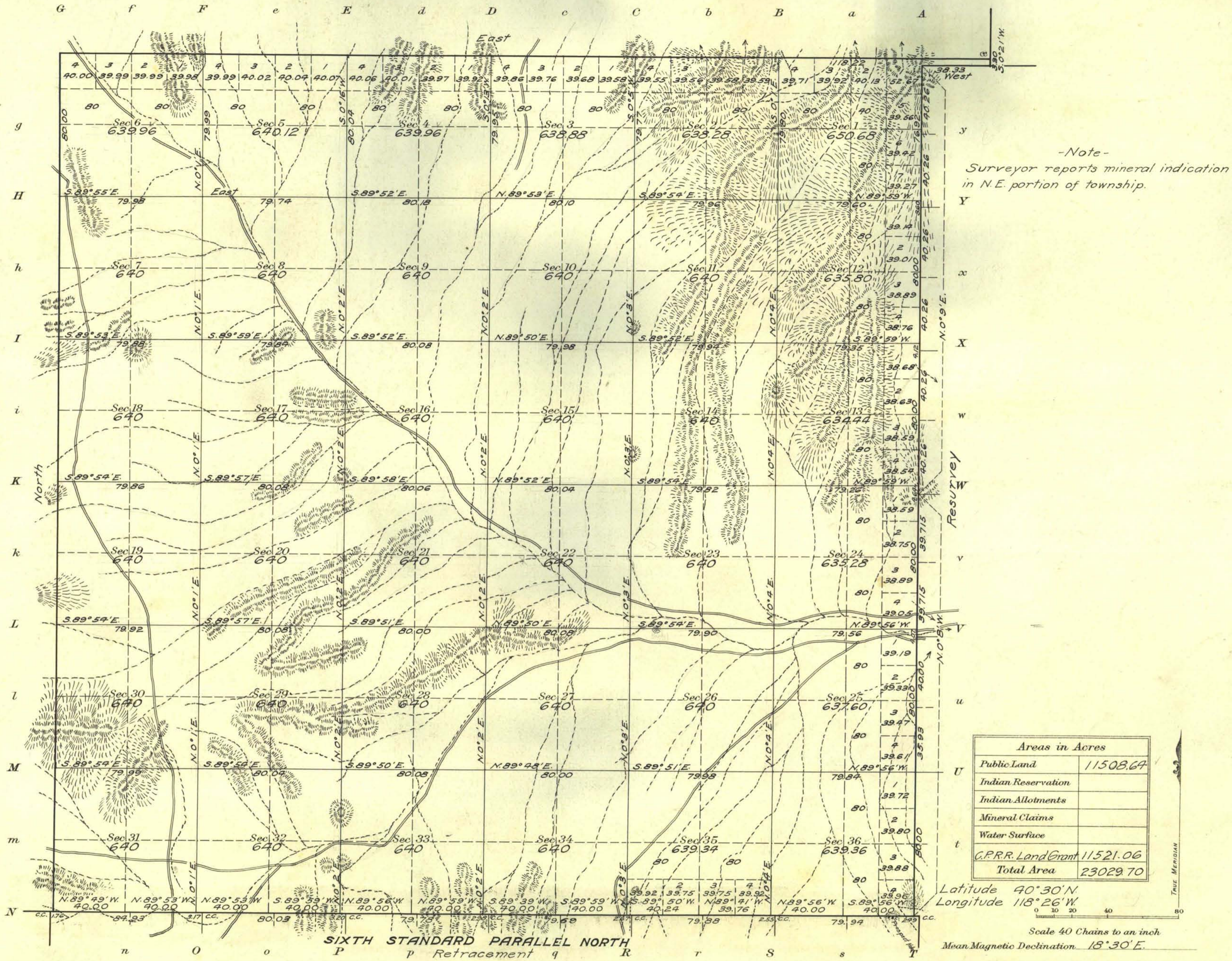


Township N^o 31 North Range N^o 31 East M^t Diablo Meridian, Nevada



Surveys Designated	By Whom Surveyed	Group		Amount of Surveys			When Surveyed	
		No.	Date	Mls.	chs.	lks.	Begun	Completed
N. & W. Boundaries	William H. Craigue and Newton E. Porter	14	Aug. 22, 1911	12	38	22	Aug. 9, 1912	Aug. 12, 1912
Sixth St. Par. North (Ret.)	"	"	"	6	00	00	" 7, "	" 8, "
E. Boundary (Resur.)	"	"	"	6	38	55	" 6, "	" 9, "
Subdivisions	"	"	"	59	76	77	" 13, "	" 18, "

The above map of Township No. 31 North Range No. 31 East of the M^t Diablo Meridian Nevada is strictly conformable to the field notes of the survey thereof on file in this office, which have been examined and approved

U. S. Surveyor General's Office.
Reno, Nevada January 14, 1914

Matthew Kyle
Surveyor General.