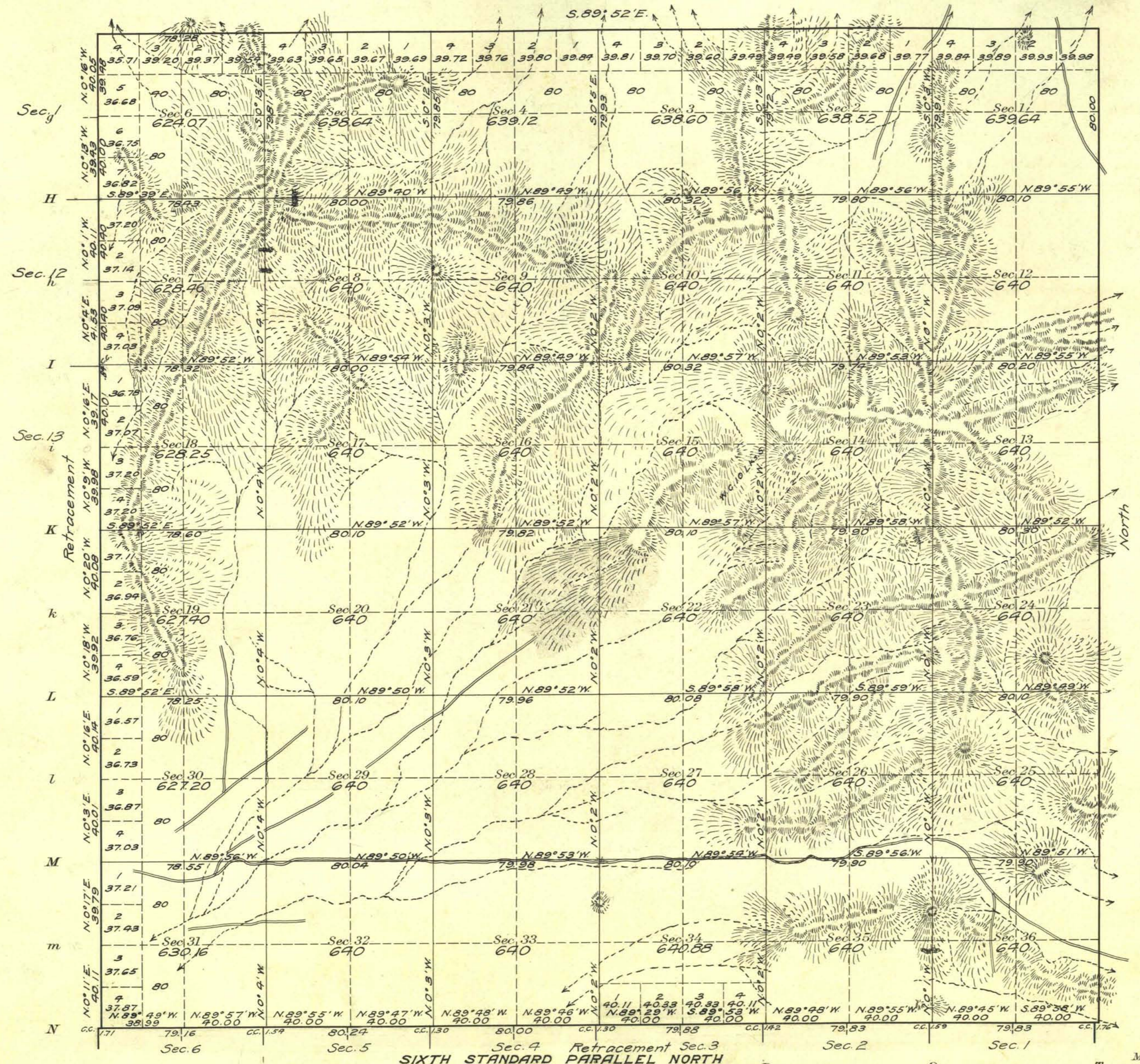


(4-675a)

Township No. 31 North Range No. 30 East Mt. Diablo Meridian, Nevada

G f F e E d D c C b B a A



Areas in Acres	
Public Land	11478.04
Indian Reservation	
Indian Allotments	
Mineral Claims	
Water Surface	
G.P.R.R. Land Grant	11482.90
Total Area	22960.94

Scale 40 Chains to an inch
 Mean Magnetic Declination 18°31' E.
 Latitude 40°30' N.
 Longitude 118°33' W.

Surveys Designated	By Whom Surveyed	Group			When Surveyed	
		No.	Date	Mls. chs. fcs.	Begun	Completed
North and East Bays	William H. Craigue and Newton E. Porter	17	Aug 22, 1911	11 78 28	Aug 9, 1912	Aug 23, 1912
Sixth St. Par. North Ret.	" "	"	"	5 78 99	Aug 20, 1912	Aug 20, 1912
West Bdy. Retcmt.	" "	"	"	6 00 32	Aug 21, 1912	Aug 21, 1912
Subdivisions	" "	"	"	59 71 83	Aug 21, 1912	Aug 29, 1912

The above map of Township No. 31 North Range No. 30 East of the Mt. Diablo Meridian Nevada is strictly conformable to the field notes of the survey thereof on file in this office, which have been examined and approved

U. S. Surveyor General's Office.
 Reno, Nevada January 14, 1914

Matthew Kyle
 Surveyor General.