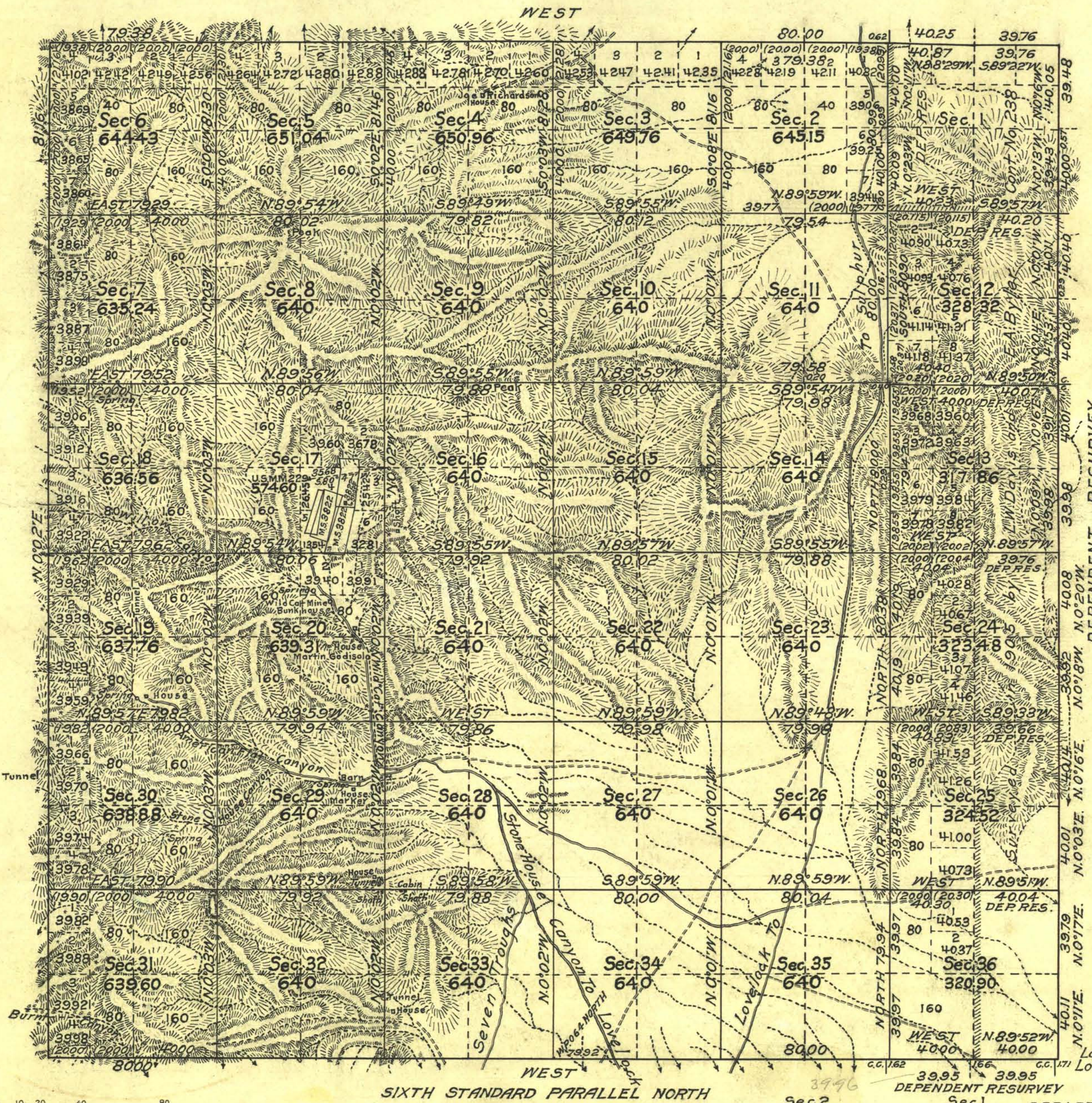


TOWNSHIP N° 31 NORTH RANGE N° 29 EAST MOUNT DIABLO MERIDIAN NEVADA



- LIST OF MINERAL CLAIMS**
 Survey No. 3822 WILD CAT LODE
 " " " BIG HERO "
 " " " LITTLE HERO "
 " " " JAY BIRD "

Mean Magnetic Declination, Scale: 40 Chains to an Inch. Area Surveyed, 20778.37 Acres.

LINES DESIGNATED	BY WHOM SURVEYED	No	GROUP DATE	MILEAGE		WHEN SURVEYED	
				MLS	CHS	BEGUN	COMPLETED
Exterior	George W. Ridgway	101	June 6, 1922	5	79.39	Oct. 11, 1922	Oct. 14, 1922
Subdivisional	George W. Ridgway	112	Aug. 13, 1923	60	04.39	Aug. 11, 1927	Sept. 28, 1927
Exterior	George W. Ridgway	112	Aug. 13, 1923	18	01.48	Aug. 16, 1927	Aug. 27, 1927
Miscellaneous	George W. Ridgway	112	Aug. 13, 1923	1	09.77	Sept. 16, 1927	Sept. 17, 1927

Office of U.S. Supervisor of Surveys
 Denver, Colorado, Oct. 25, 1928.
 The above plot of Township No. 31 North Range No. 29 East of the Mount Diablo Meridian, Nevada is strictly conformable to the field notes of the survey thereof which have been examined and approved.

Monte D. Dunson
 U.S. Supervisor of Surveys.

DEPARTMENT OF THE INTERIOR
 GENERAL LAND OFFICE
 Washington, D.C., February 18, 1929.
 The survey represented by this plat having been correctly executed in accordance with the requirements of law and the regulations of this office, is hereby accepted.

Wm. C. Howell
 Assistant Commissioner.